

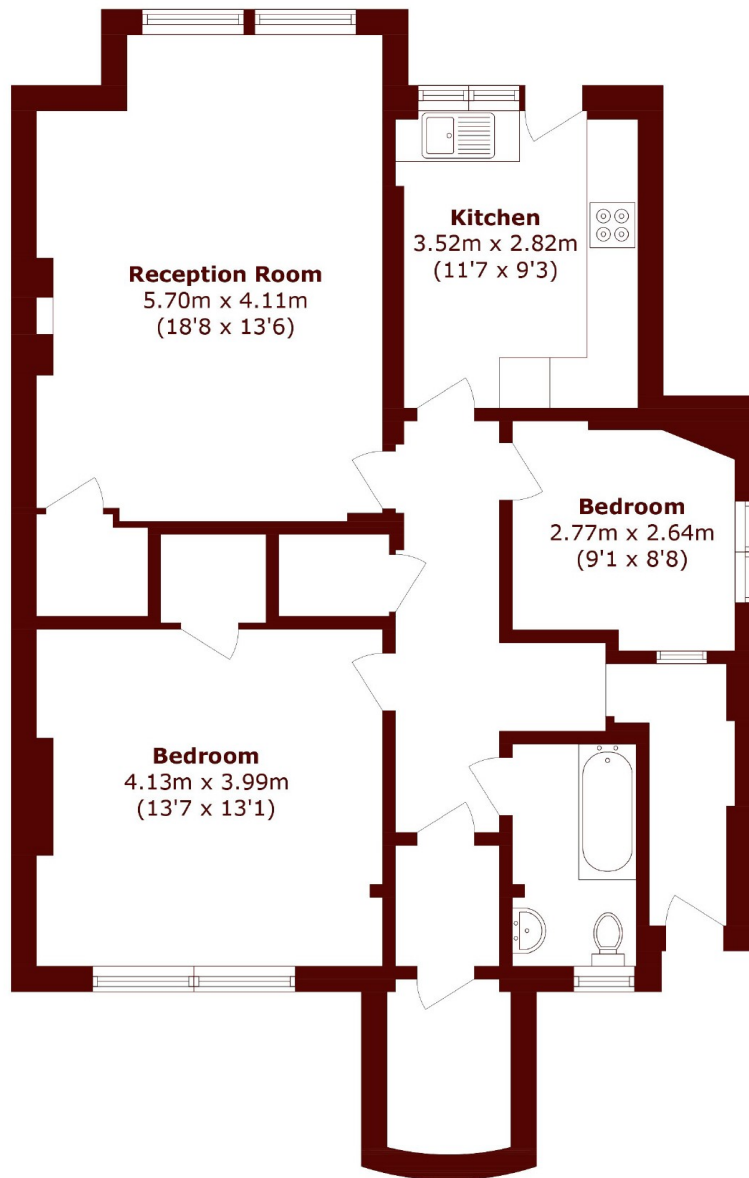


Brondesbury Villas, NW6

£2,500 pcm



- Two Bedroom Flat
- Large Reception Room
- Close to Transport
- Communal Garden
- Separate Kitchen
- Close to High Street



Total area (approx.): 84.8 sq. m (912.7 sq. ft)

Marsh & Parsons Queens Park

91 Salusbury Road, London,
NW6 6NH
020 7624 4513