

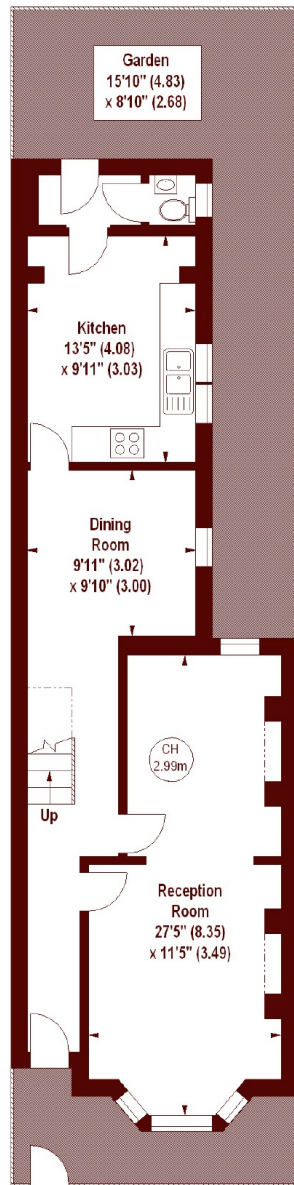


## Priory Park Road, NW6

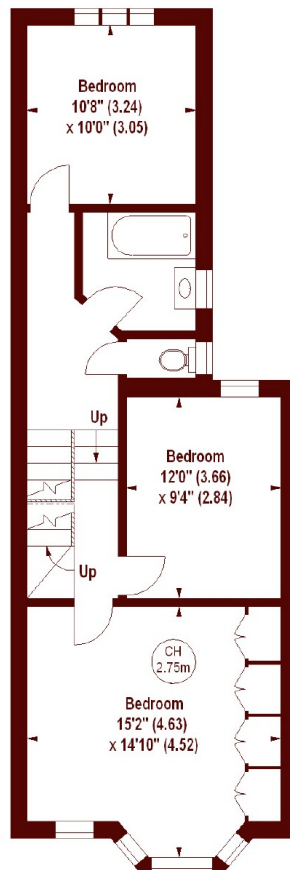
£4,500 pcm

4 2 2 E

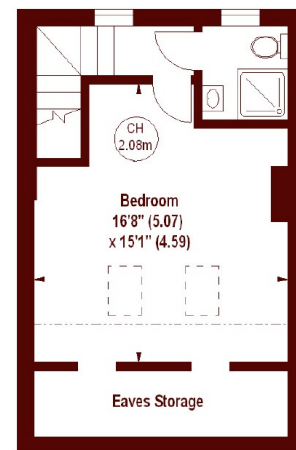
- Four Double Bedrooms
- Terrace House
- South-Facing Garden
- Modern
- Close to High Street
- Near Transport



**GROUND FLOOR**



**FIRST FLOOR**



**SECOND FLOOR**

**Priory Park Road, NW6**  
**APPROX. GROSS INTERNAL FLOOR AREA 1654 SQFT / 153.66 SQM**  
**(Including Eaves Storage)**  
**Eaves Storage**  
**67 SQFT / 6.22 SQM**



Key :  
CH - Ceiling Height

The floor plan is not to scale and measurements and areas shown are approximate and therefore should be used for illustrative purposes only. The plan has been prepared in accordance with the RICS code of Measuring Practice and whilst we have confidence in the information produced, it must not be relied on. If there is any aspect of particular importance, you should carry out or commission your own inspection of the property.  
 Copyright of FeaturePRO.

## Marsh & Parsons Queens Park

91 Salisbury Road, London,  
 NW6 6NH  
 020 7624 4513