



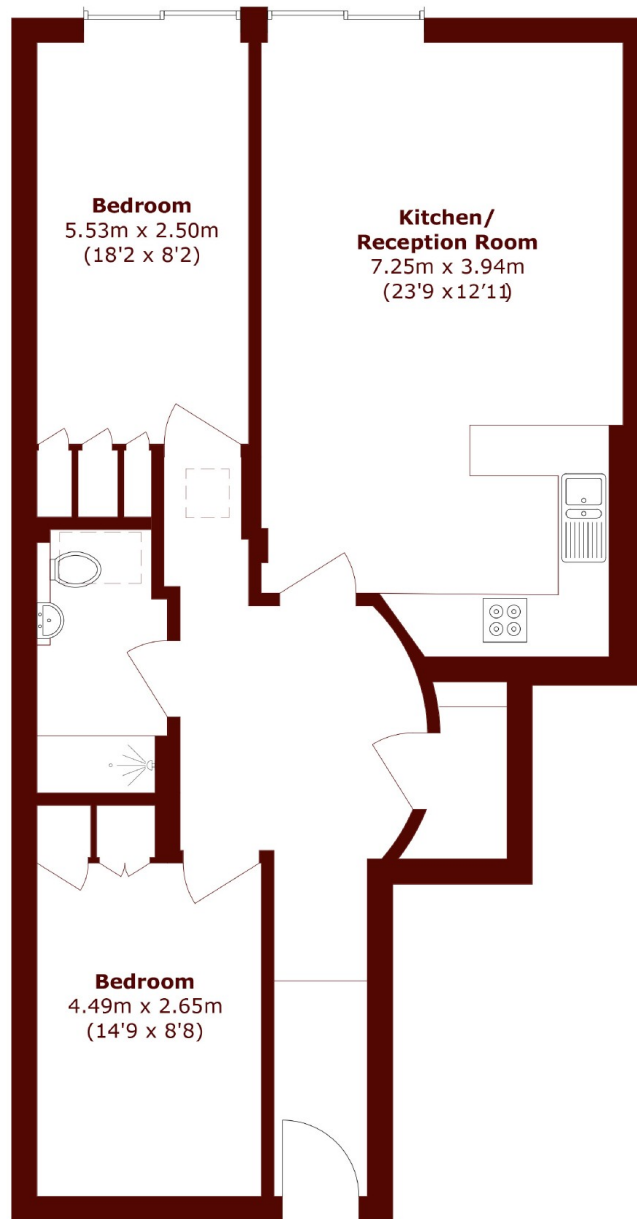
## Felixstowe Road, NW10

£2,750 pcm



- Two bedrooms
- Wood floors and high ceilings
- Recently refurbished
- Patio garden

- 2 Bedrooms
- 1 Reception Rooms



Total area (approx.): 79.4 sq. m (854.6 sq. ft)

## Marsh & Parsons Queens Park

91 Salusbury Road, London,  
NW6 6NH  
020 7624 4513