



## Compayne Gardens, NW6

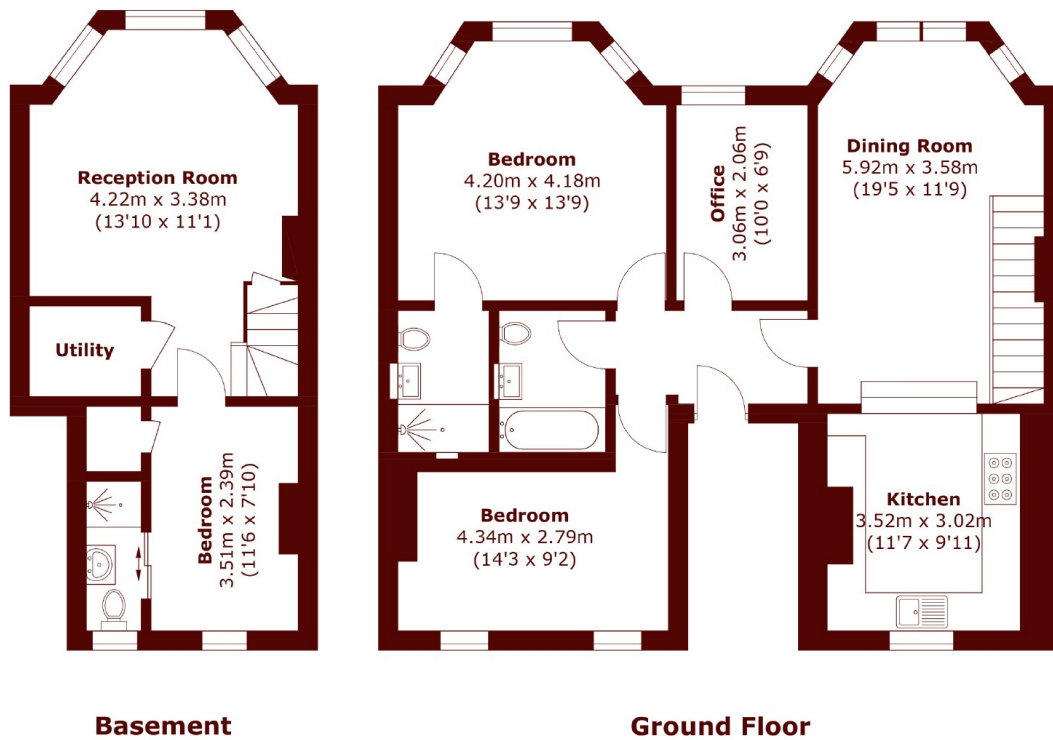
£4,500 pcm



- - Four Bedroom
- - Three Bathroom

- - Split-Level
- - Communal Garden

- - Tennis Court
- - Close to Transport



Total area (approx.): 112.5 sq. m (1,210.9 sq. ft)  
(Including Basement)

## Marsh & Parsons Queens Park

91 Salusbury Road, London,  
NW6 6NH  
020 7624 4513