



## Victoria Road, NW6

£5,500 per week (£5,500 pcm)

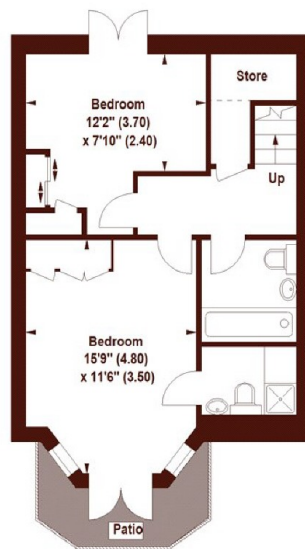


- Three Bedroom Property
- Recently Renovated
- Under-floor Heating
- Private Garden
- Split-Level
- Close To Transport

## Victoria Road, NW6

APPROX. GROSS INTERNAL FLOOR AREA 1283 SQFT / 119.19 SQM

Key :  
CH - Ceiling Height



Not to scale, for guidance only and must not be relied upon as a statement of fact.  
All measurements and areas are approximate only

### Marsh & Parsons Marsh & Parsons

91 Salisbury Road, London,  
NW6 6NH  
020 7624 4513

We aim to make our particulars both accurate and reliable. However, they are not guaranteed; nor do they form part of an offer or contract. If you require clarification on any points then please contact us, especially if you're traveling some distance to view. Please note that appliances and heating systems have not been tested and therefore no warranties can be given as to their good working order.