



## 16 Pinnacle House

Kings Langley, WD4 8FW

**£1,200 PCM**

GREAT LOCATION! Call now to arrange a viewing of this contemporary one bedroom, ground floor apartment. Immaculately presented, and within close proximity to Kings Langley Station. The property boasts an open plan lounge and kitchen with fully integrated appliances, a double bedroom with fitted wardrobes and a modern shower room. Call Signature Estates now to arrange a viewing.

- Modern One Bedroom Flat
- Moments from Kings Langley Station
- Open Plan Lounge
- Sleek Kitchen with Integrated Appliances.
- Large Bedroom with Fitted Wardrobes
- One Allocated Parking Space
- Offered Furnished
- Available beginning of August

### Viewing

Please contact our Abbots Langley Office on 01923262666 if you wish to arrange a viewing appointment for this property or require further information.





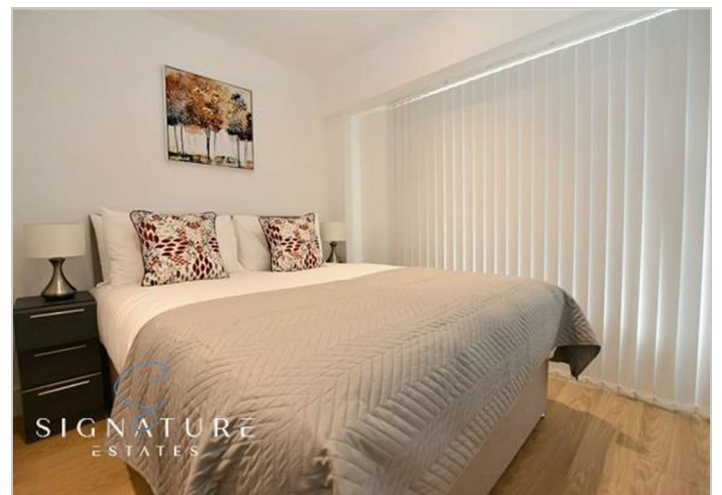
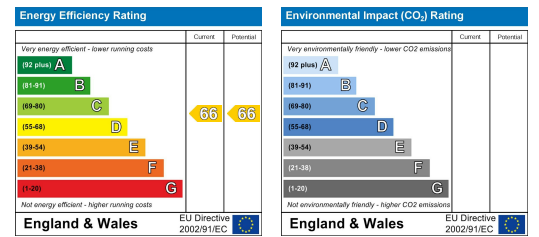
## Floor Plan



## Area Map



## Energy Efficiency Graph



These particulars, whilst believed to be accurate are set out as a general outline only for guidance and do not constitute any part of an offer or contract. Intending purchasers should not rely on them as statements of representation of fact, but must satisfy themselves by inspection or otherwise as to their accuracy. No person in this firm's employment has the authority to make or give any representation or warranty in respect of the property.