



Lymington Court

Leavesden, WD25 7BT

For Sale By Informal Tender £200,000

WHAT A SORT LYMINGTON COURT....a fantastic well presented one bedroom flat in a quiet cul de sac in Leavesden. Great location and well connected with easy access to A41/A405.

This first floor flat is located in a quiet cul-de-sac in Leavesden, making it perfect for commuters. The flat is also within easy reach of local amenities, including schools, shops, and restaurants.

The property comprises of a living room, separate kitchen, a double bedroom, a bathroom, and a shared rear garden. The living room is spacious and bright, with large windows that let in plenty of natural light. The kitchen is modern and well-equipped, with a range of appliances including a cooker, sink, and hob. The bedroom is a good size and has plenty of storage space. The bathroom has a shower over the bath and WC.

This property is perfect for a first time buyer or investor. It is in a great location and has everything you need for a comfortable home.

Viewing

Please contact our Abbots Langley Office on 01923262666 if you wish to arrange a viewing appointment for this property or require further information.

- One Bedroom Flat
- First Floor Apartment
- Bright And Spacious Property
- Modern Kitchen
- Close to M1 and M25
- Electric Heating
- Cul de Sac Location
- Council Tax Band C
- Long Lease 999 Years From New
- For Sale By Informal Tender



1



1

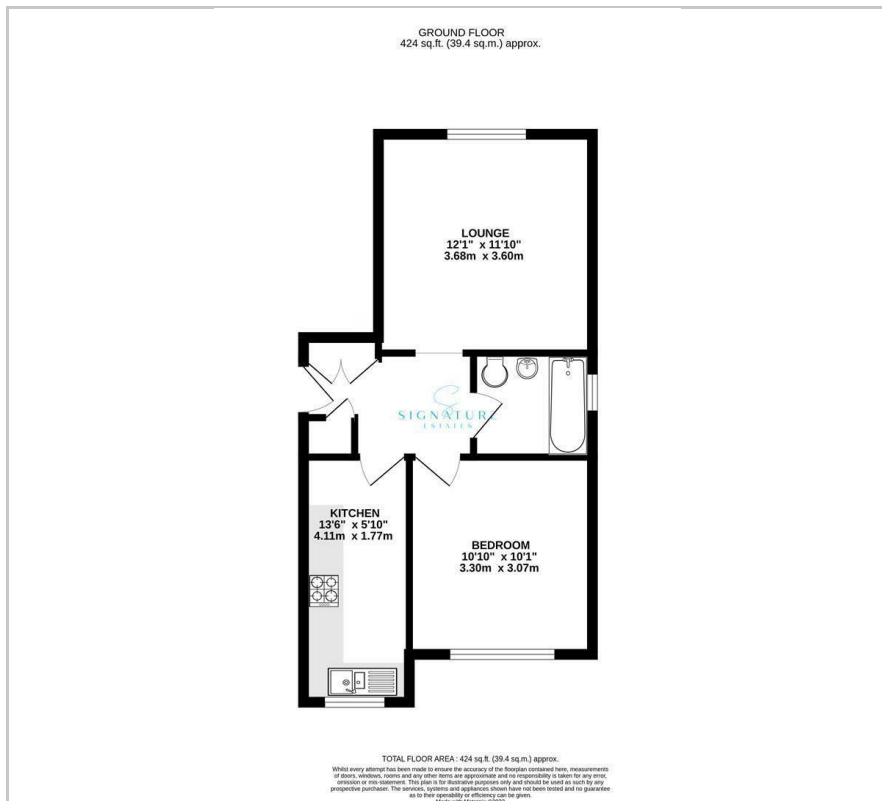


1



C

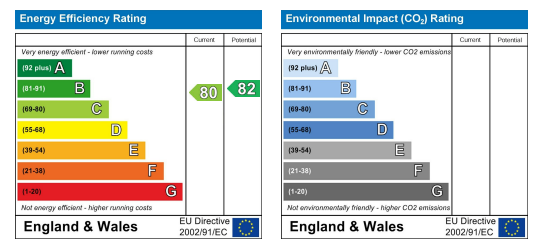
Floor Plan



Area Map



Energy Efficiency Graph



These particulars, whilst believed to be accurate are set out as a general outline only for guidance and do not constitute any part of an offer or contract. Intending purchasers should not rely on them as statements of representation of fact, but must satisfy themselves by inspection or otherwise as to their accuracy. No person in this firm's employment has the authority to make or give any representation or warranty in respect of the property.