



SIGNATURE
ESTATES

20 Farmers Close

Watford, WD25 7DH

Offers Over £400,000

Introducing a charming opportunity nestled just a stone's throw away from convenient local amenities and reputable schools. This inviting three-bedroom mid-terrace offers the ideal canvas for those seeking a project to transform it into their dream home. Boasting a spacious reception room, a well-appointed kitchen, and a delightful conservatory on the ground floor, the property provides ample space for comfortable living and entertaining. Upstairs, discover three cosy bedrooms awaiting your personal touch. Embrace the potential to modernize and customize this property to suit your unique tastes and preferences. Don't miss the chance to make this desirable location your own – schedule a viewing today!

Viewing

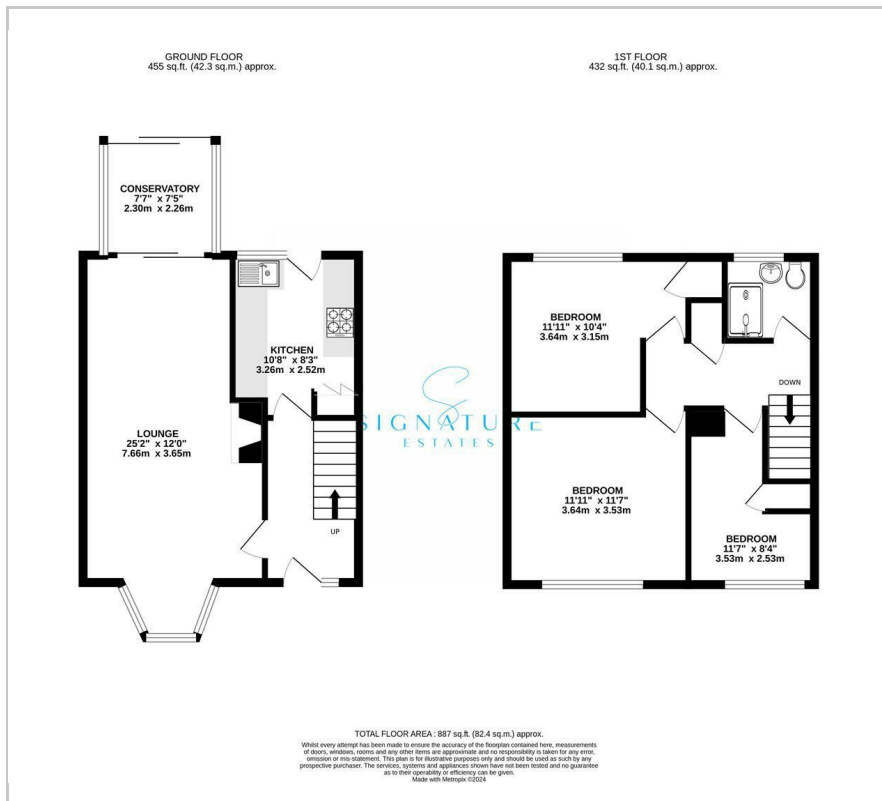
Please contact our Abbots Langley Office on 01923262666 if you wish to arrange a viewing appointment for this property or require further information.

- Three Bedroom Terraced Property
- Potential To Modernise
- Great Location Being Near Shops and Schools
- Quite Residential Road
- Two Double Bedrooms
- Outdoor Storage
- Offered Chain Free
- For Sale By Tender

SIGNATURE
ESTATES



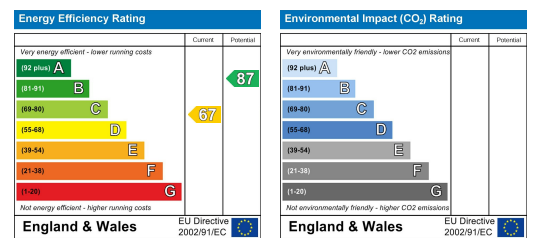
Floor Plan



Area Map



Energy Efficiency Graph



These particulars, whilst believed to be accurate are set out as a general outline only for guidance and do not constitute any part of an offer or contract. Intending purchasers should not rely on them as statements of representation of fact, but must satisfy themselves by inspection or otherwise as to their accuracy. No person in this firm's employment has the authority to make or give any representation or warranty in respect of the property.