



SIGNATURE
ESTATES

Bromet Close

Watford, WD17 4LP

Offers Over £475,000

EPITOME OF ELEGANCE - Welcome to a residence that transcends mere living; it epitomizes elegance in its purest form. Nestled within its refined walls lies a sanctuary that exudes timeless sophistication, a testament to the unwavering commitment to superior design.

This distinguished property stands as a beacon of exquisite taste, offering a harmonious blend of contemporary allure and enduring quality. From the moment you step foot into its graceful ambiance, you are greeted by an atmosphere that speaks volumes of refined living.

Every inch of this abode has been meticulously crafted to perfection, where no expense has been spared in the pursuit of luxury. This is not just a home; it's a masterpiece, meticulously curated to cater to the most discerning tastes.

Prepare to be the envy of friends and family alike as they witness the awe-inspiring fusion of space and style within this dwelling. The expansive layout seamlessly integrates a sprawling casual dining area, a welcoming living space, and a culinary haven - the kitchen, forming the heart and soul of this extraordinary residence.

Step into the kitchen, a haven for connoisseurs of fine dining, where every culinary desire finds its fulfilment. Equipped with state-of-the-art appliances, premium finishes, and thoughtful design, it stands as a testament to the pursuit of culinary excellence.

Viewing

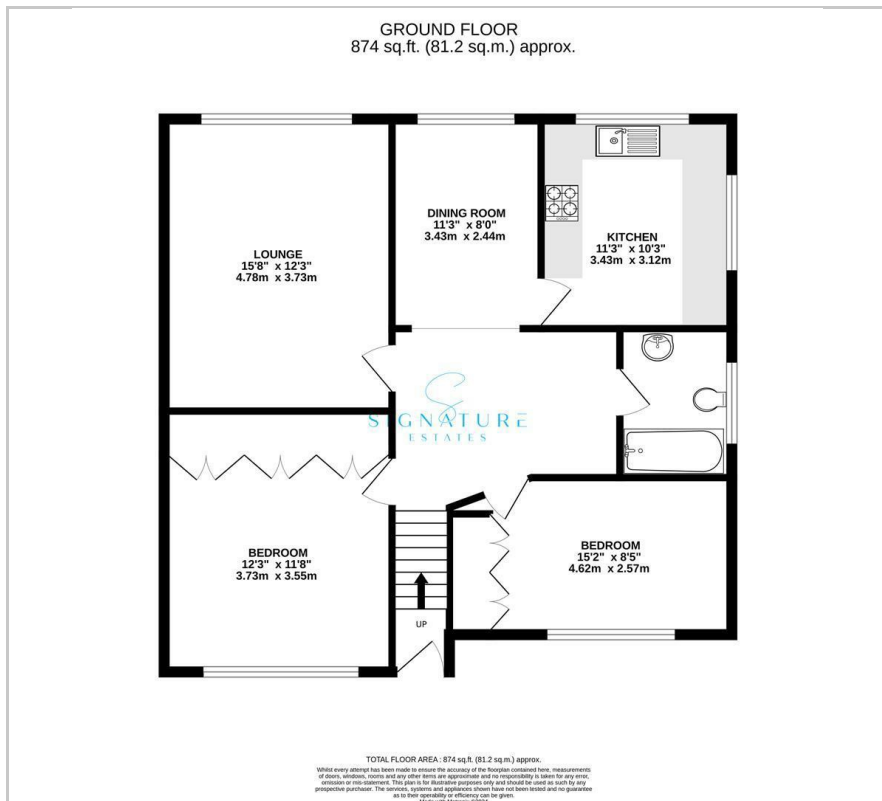
Please contact our Abbots Langley Office on 01923262666 if you wish to arrange a viewing appointment for this property or require further information.



- Two Double Bedrooms
- Luxury Apartment
- Expansive, Light-Filled Living Spaces
- A Sleek, Sophisticated Kitchen
- Relax In The Luxurious Bathroom
- Convenient Location
- Tranquil Setting
- EPC Rating C
- Garage En Bloc
- Available Chain Free



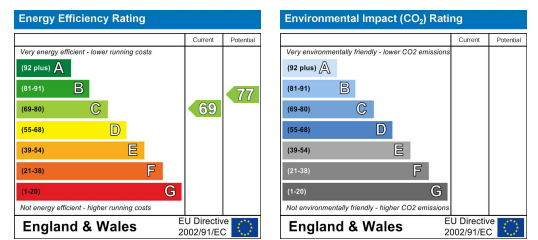
Floor Plan



Area Map



Energy Efficiency Graph



These particulars, whilst believed to be accurate are set out as a general outline only for guidance and do not constitute any part of an offer or contract. Intending purchasers should not rely on them as statements of representation of fact, but must satisfy themselves by inspection or otherwise as to their accuracy. No person in this firm's employment has the authority to make or give any representation or warranty in respect of the property.