



SIGNATURE
ESTATES

Cassiobury Drive

Watford, WD17 3AE

£1,400,000

Welcome to Cassiobury Drive, an executive five bedroom family home in the heart of the eminent, leafy part of Watford. The property is set back from the road, with a wide driveway to securely park multiple vehicles. Its architecture exudes luxury with its contemporary facade and landscaping. Spanning more than 3,154 sq. ft with a stunning second floor with a fantastic entertaining space throughout, Cassiobury Drive is a home your family will be proud to own.

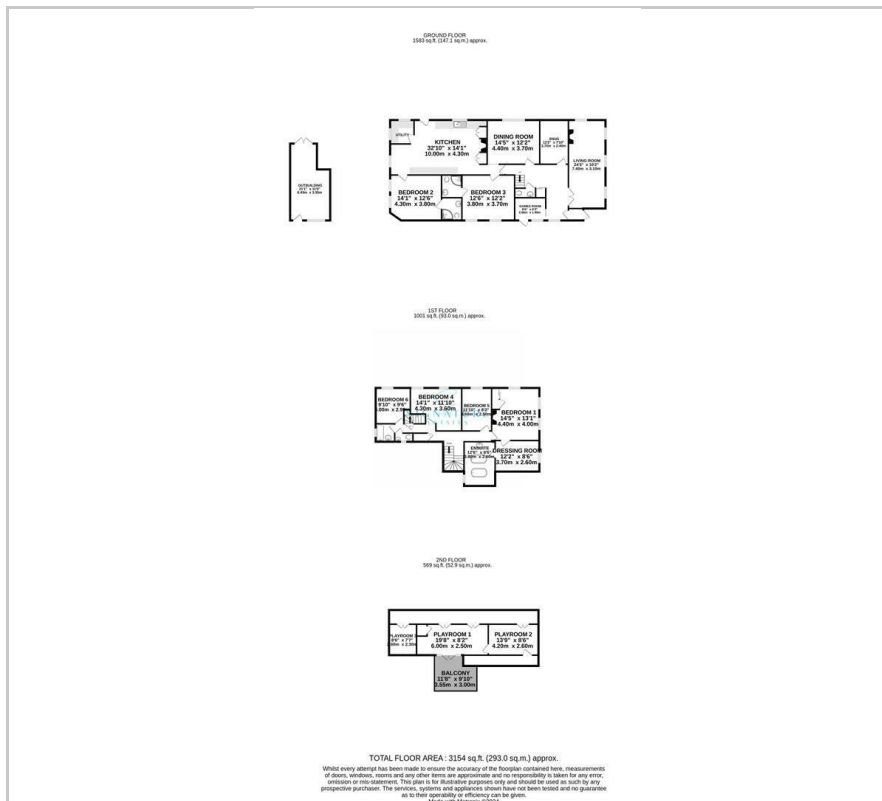
- Six Bedrooms
- Expansive, Light-Filled Living Spaces
- A Bespoke Kitchen
- Three Lavish Bathroom Suites
- Awe Inspiring Principle Suite
- In Excess of 3100 Square Feet
- Delightfully Tranquil Garden Setting
- Annex/Garden Room
- Plentiful Parking
- No Onward Complications

Viewing

Please contact our Abbots Langley Office on 01923262666 if you wish to arrange a viewing appointment for this property or require further information.

 5
  2
  2
  D

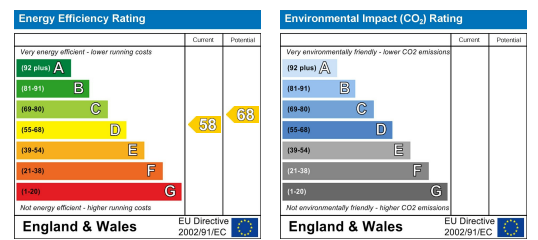
Floor Plan



Area Map



Energy Efficiency Graph



These particulars, whilst believed to be accurate are set out as a general outline only for guidance and do not constitute any part of an offer or contract. Intending purchasers should not rely on them as statements of representation of fact, but must satisfy themselves by inspection or otherwise as to their accuracy. No person in this firm's employment has the authority to make or give any representation or warranty in respect of the property.