



1 Wander Wharf

Kings Langley, WD4 8SL

£200,000

Discover the epitome of modern living in this charming ground floor one-bedroom apartment, conveniently situated just a short stroll away from Kings Langley Station and local amenities. Embrace the comfort of a spacious double bedroom, complemented by contemporary design throughout the property. Enjoy the seamless blend of convenience and style, making this residence an ideal choice for those seeking a perfect balance between accessibility and modern living. Elevate your lifestyle in this well-appointed home, where every detail reflects comfort and sophistication.

- One Double Bedroom Apartment
- Fantastic Condition Throughout
- Ground Floor
- Long Lease Of 123 Years Remaining
- Close To Local Amenities
- Walking Distance To Kings Langley Station
- Perfect Investment of First Time Buy
- Chain Free

Viewing

Please contact our Abbots Langley Office on 01923262666 if you wish to arrange a viewing appointment for this property or require further information.



1



1

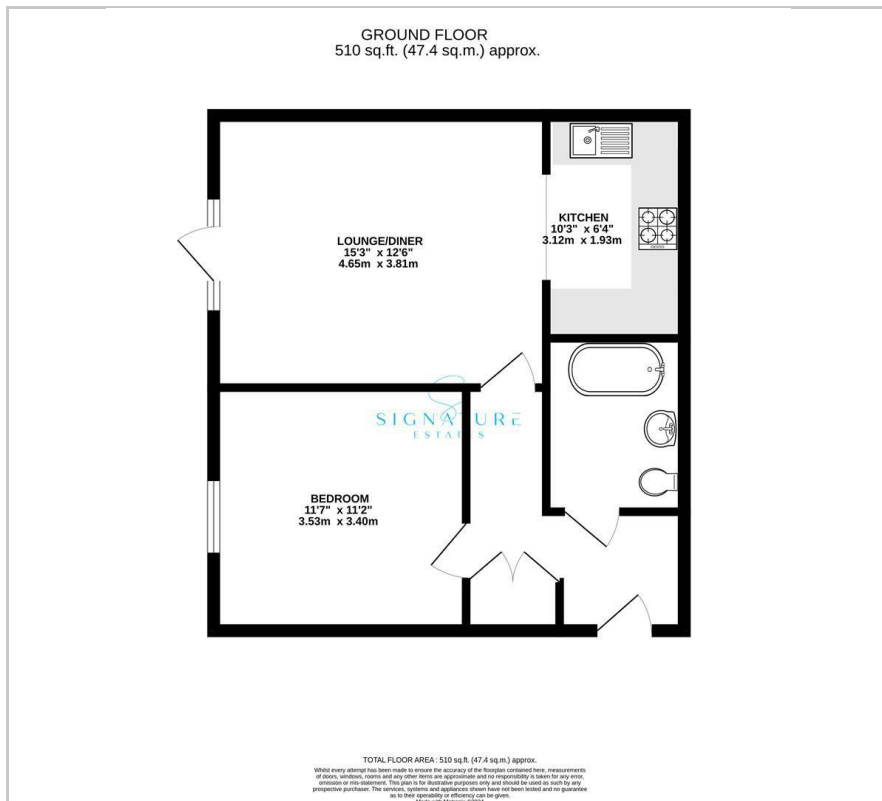


1

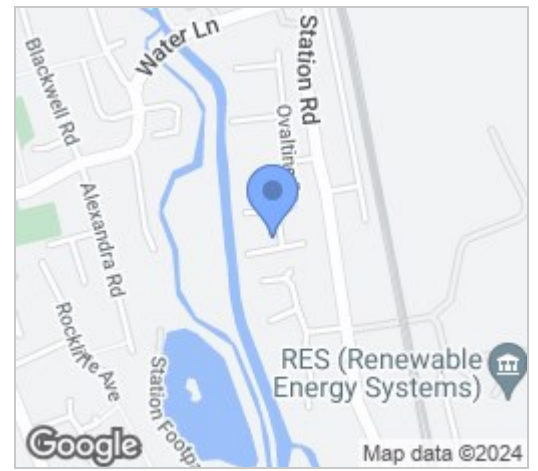


C

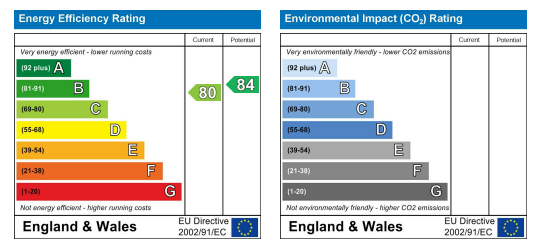
Floor Plan



Area Map



Energy Efficiency Graph



These particulars, whilst believed to be accurate are set out as a general outline only for guidance and do not constitute any part of an offer or contract. Intending purchasers should not rely on them as statements of representation of fact, but must satisfy themselves by inspection or otherwise as to their accuracy. No person in this firm's employment has the authority to make or give any representation or warranty in respect of the property.