



93 Greville Gardens

Great Park, NE13 9DB

****360 Virtual Tour**** Available 12th April 2021 - Rent £1300pcm - 4 Bedroom Detached House - Garage - Large Driveway - Great sized rear garden - Very sought after property style - En-suite master - Home office - double bedrooms - separate w/c - 12-month contract minimum - Viewings Appointments available from the 6th April.

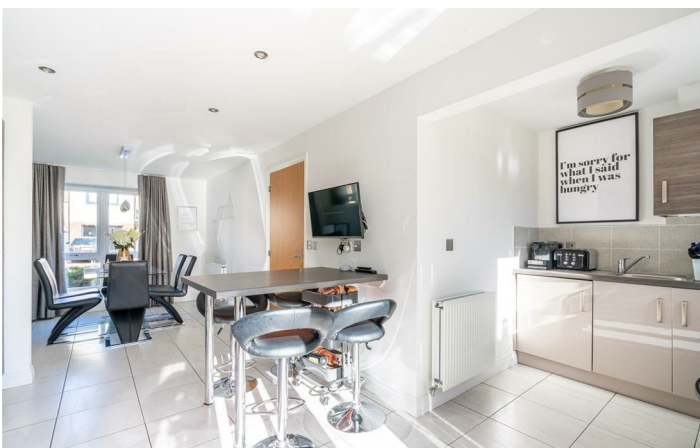
£1,300 Per Month

93 Greville Gardens

Great Park, NE13 9DB



- **360 Virtual Tour**
- Available 12th April 2021
- Rent £1300pcm
- 4 Bedroom Detached House
- Garage
- Large Driveway
- Great sized rear garden
- Very sought after property style
- En-suite master
- Home office



Floor Plan

These particulars, whilst believed to be accurate are set out as a general outline only for guidance and do not constitute any part of an offer or contract. Intending purchasers should not rely on them as statements of representation of fact, but must satisfy themselves by inspection or otherwise as to their accuracy. No person in this firms employment has the authority to make or give any representation or warranty in respect of the property.

