

BRUNTON

RESIDENTIAL



DATALLER DRIVE, HAVANNAH PARK, NE13

£435,000

BRUNTON

RESIDENTIAL





BRUNTON

RESIDENTIAL



BRUNTON

RESIDENTIAL

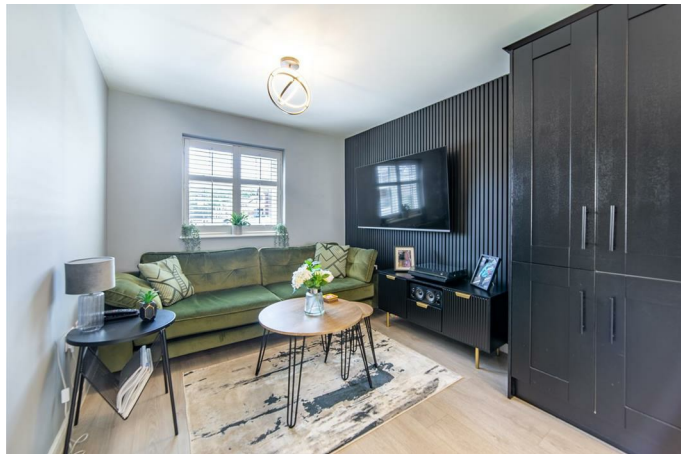


FANTASTIC PLOT - DETACHED HOME - DRIVEWAY WITH GARAGE

Brunton Residential are delighted to offer this four bedroom detached home located on Dataller Drive in the hugely popular Havannah Park development. This immaculate 'Whitebeam' style home from Bellway occupies a fantastic plot with open aspect to the front, is in great condition throughout and would make an excellent family home.

BRUNTON

RESIDENTIAL



BRUNTON

RESIDENTIAL

Accommodation briefly comprises; entrance hallway with access to downstairs WC & two store cupboards. There is a spacious lounge with French doors over the rear gardens and a fantastic full length kitchen and dining area which the current owners have utilised as an additional lounge area. The kitchen itself comes with a range of wall and floor units with coordinated work surfaces and fitted appliances with ample space for formal and informal dining.

The first floor consists of three generous bedrooms including one with a stylish, tiled en-suite shower room and dressing room area. All bedrooms have ample space for free standing wardrobes and there is a family bathroom. From the first floor landing there is access to the master bedroom suite which is situated on the second floor. This top floor suite boasts an en-suite bathroom with separate shower as well as a large dressing area.

Externally, there is a large garden to the front which is laid mainly to lawn with pathway access to the property while the rear garden has a large lawn with pergola as well as a paved patio area with a fenced and walled boundaries and gated access to the front. The property benefits from a long driveway which provides off-street parking for multiple cars and access to the detached garage.



BRUNTON

RESIDENTIAL

TENURE : Freehold

LOCAL AUTHORITY :

COUNCIL TAX BAND : F

EPC RATING : B

