

# BRUNTON

---

## RESIDENTIAL



**MOOR EDGE DRIVE, EAST BENTON RISE, NE28**

**£155,000**



# BRUNTON

---

## RESIDENTIAL









# BRUNTON

---

## RESIDENTIAL







# BRUNTON

---

## RESIDENTIAL

Brunton Residential are pleased to present this two-bedroom end terrace house located in the sought-after East Benton Rise estate.

This property offers two well-proportioned bedrooms, and a spacious, open-plan kitchen, dining and lounge area. This property further benefits from a downstairs WC, a family bathroom and off-street parking to the front.

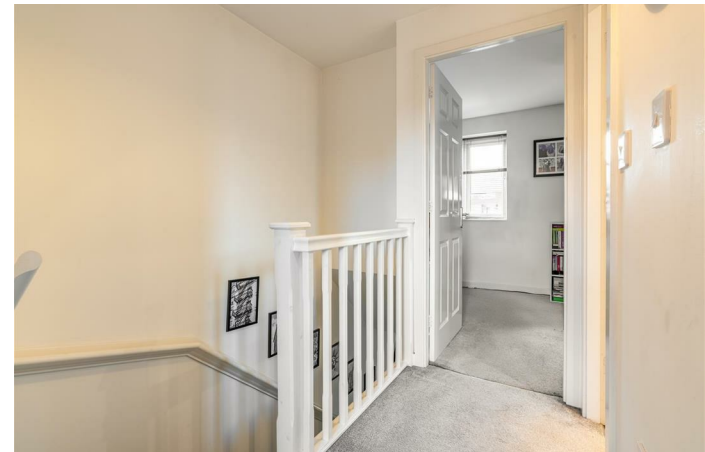
The property is positioned in a well-connected area, offering easy access to local amenities such as shops, schools, and parks. The area benefits from excellent transport links, making it a great base for commuting to Newcastle City Centre and surrounding towns.



# BRUNTON

---

## RESIDENTIAL





# BRUNTON

---

## RESIDENTIAL

Upon entering, you are welcomed you into an entrance hall with stairs leading to the first-floor landing, with wood-effect flooring, which extends throughout. From here, you have access to a spacious open-plan kitchen, diner, and lounge. The kitchen is fully equipped with floor and wall units, integrated appliances, and a breakfast bar. The lounge offers double doors leading to the enclosed rear garden. There is also a ground-floor WC.

Upstairs, you'll find two well-proportioned bedrooms and a family bathroom, complete with a bath, overhead shower, washbasin, and WC.

Externally, the property offers off-street parking and an enclosed rear garden, predominantly laid to lawn with a paved seating area.





# BRUNTON

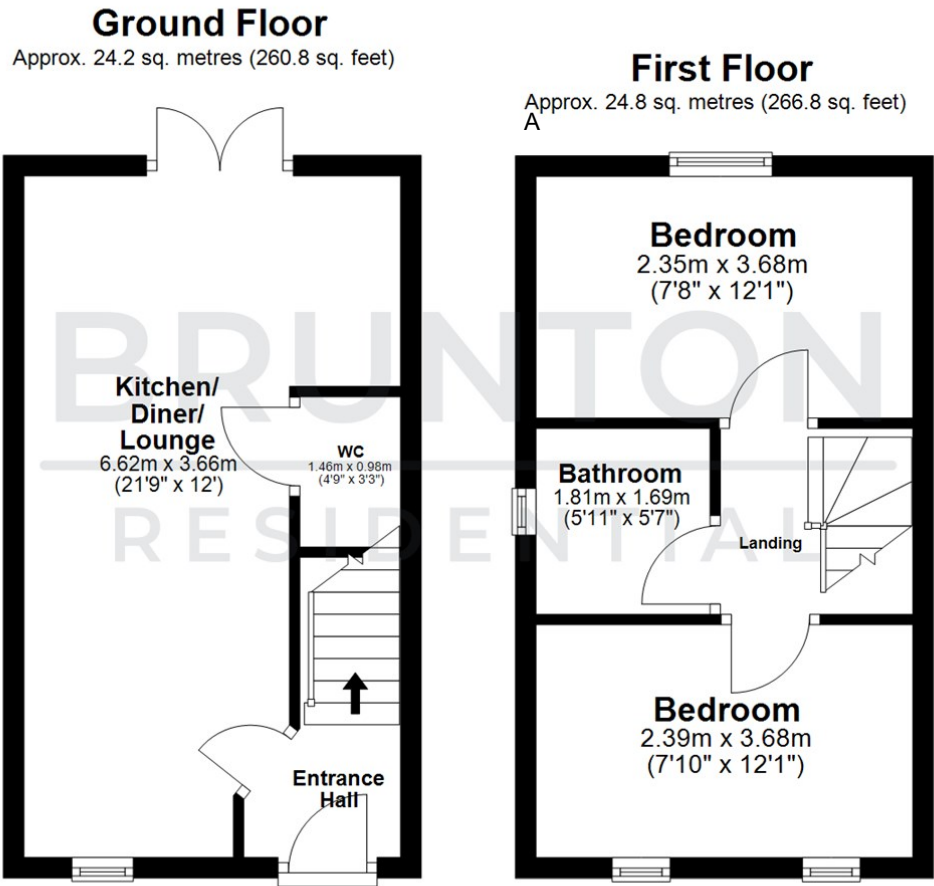
## RESIDENTIAL

TENURE : Freehold

LOCAL AUTHORITY : North Tyneside Council

COUNCIL TAX BAND : A

EPC RATING : C



All measurements are approximate and are for illustration only.  
Plan produced using PlanUp.

