

BRUNTON

RESIDENTIAL



LOW GOSFORTH COURT, MELTON PARK, NE3

Offers Over £220,000

BRUNTON

RESIDENTIAL





BRUNTON

RESIDENTIAL



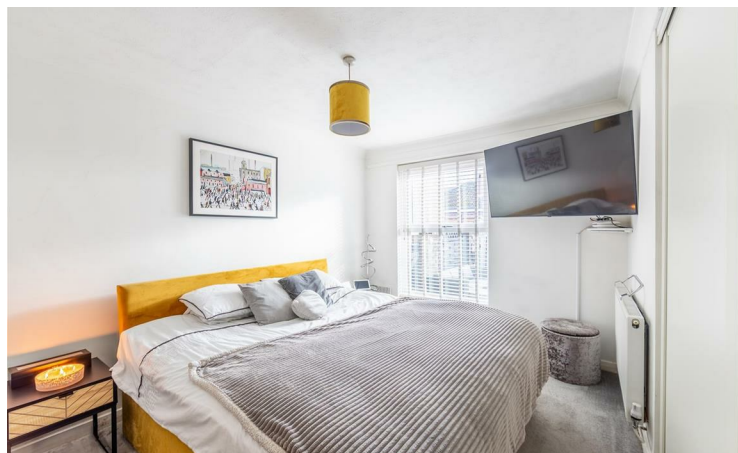
BRUNTON

RESIDENTIAL



Brunton Residential are delighted to welcome this rare to the market ground floor flat on Low Gosforth Court, Melton Park with a private South facing rear garden, double garage and stunning four piece bathroom.

For more information and to book your viewing please call our team on 0191 236 8347.



BRUNTON

RESIDENTIAL

Located on the sought after Low Gosforth Court, tucked away within Melton Park, is this simply stunning two bedroom ground floor apartment, briefly comprising; communal entrance hallway, apartment entrance, reconfigured four piece bathroom with stand alone shower, two double bedrooms, both with built in wardrobes. Recently installed Schuller kitchen with built in AEG appliances and induction hob. Dual aspect lounge diner spanning the depth of the property with French doors opening onto the immaculate South facing rear garden

Externally there are communal gardens and ample parking as well as a detached double garage for external store. The apartment is one of only two in the development to have its own private South facing rear garden which provides an excellent entertaining space.

Internal inspection is essential to appreciate the accommodation on offer, for more information and to book your viewing please call our team on 0191 236 8347.

Tenure

The agent understands the property to be leasehold. However, this should be confirmed with a licenced legal representative.

Council Tax Band C



BRUNTON

RESIDENTIAL

TENURE : Leasehold

LOCAL AUTHORITY : Newcastle City Council

COUNCIL TAX BAND : C

EPC RATING : C

