

BRUNTON

RESIDENTIAL



ELMWOOD PARK GARDENS, NEWCASTLE UPON TYNE, NE13

Offers Over £300,000

BRUNTON

RESIDENTIAL





BRUNTON

RESIDENTIAL





DETACHED HOME – OPEN VIEWS TO FRONT – SOUGHT AFTER LOCATION

Brunton Residential are delighted to bring to market this fantastic four bedroom property situated on the popular street of Elmwood Park Gardens in Great Park. This excellent detached home offers ample living space, and is located close to local amenities, shops and great schooling options. While the main feature are the views to the front, this home has a lovely back garden which is not over looked.

BRUNTON

RESIDENTIAL



BRUNTON

RESIDENTIAL

Accommodation briefly comprises of; entrance hallway which offers direct access to a large open lounge with double doors which lead into a large kitchen/diner with coordinated cupboards and work surfaces. This room has patio doors leading to the rear gardens. There is also a utility room and a ground floor WC.

The first floor consists of a landing with access to the master bedroom with ensuite shower room and fitted wardrobes, bedroom two with access to balcony, two further bedrooms and a family bathroom. A loft hatch offers access to an extra storage area.

Externally, there is a South facing garden to the rear with a range of lawned and patio areas with fenced boundaries. The front area offers a driveway providing off street parking and pathway access to the property. Finally, the balcony accessed from the second bedroom has stunning views over the farmland to the front..



BRUNTON

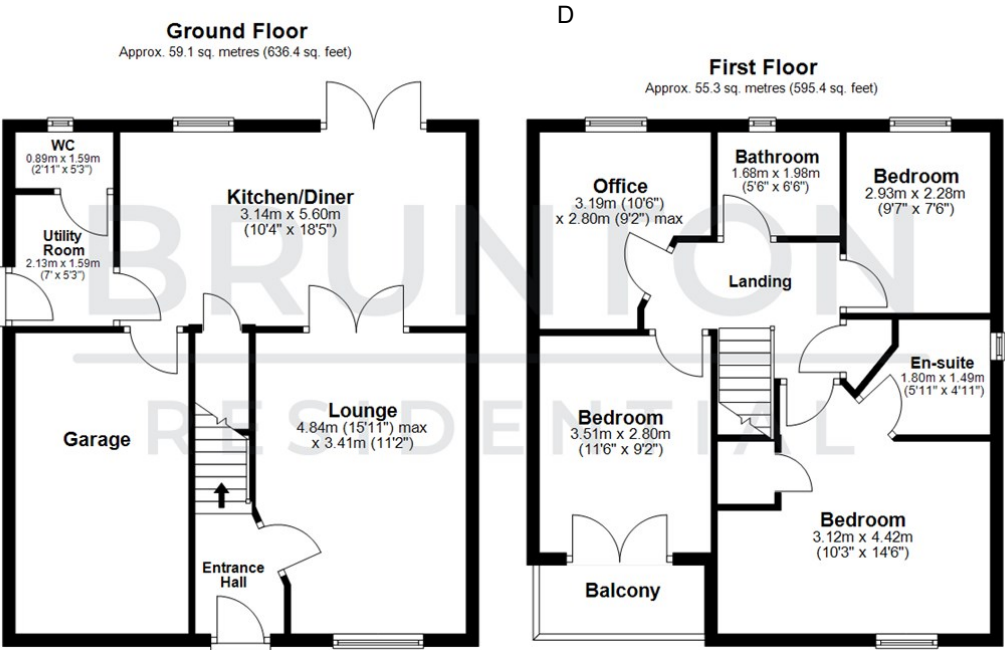
RESIDENTIAL

TENURE : Freehold

LOCAL AUTHORITY :

COUNCIL TAX BAND : D

EPC RATING : B



Total area: approx. 114.4 sq. metres (1231.8 sq. feet)

All measurements are approximate and are for illustration only.
Plan produced using PlanUp.

