

BRUNTON

RESIDENTIAL



HESLEYSIDE DRIVE, FENHAM, NE5

Offers Over £180,000

BRUNTON

RESIDENTIAL





BRUNTON

RESIDENTIAL



BRUNTON

RESIDENTIAL



BEAUTIFULLY PRESENTED – CLOSE TO SCHOOLS AND AMENITIES – PERFECT FAMILY HOME

Brunton Residential are delighted to bring to market this fantastic three bedroom property situated on the popular street of Hesleyside Drive in Fenham. This excellent semi-detached home offers ample living space, and is located close to local amenities, shops and schools.

BRUNTON

RESIDENTIAL



BRUNTON

RESIDENTIAL

Accommodation briefly comprises of; entrance hallway which offers direct access to a light and airy living room that leads to the kitchen/dining room. The kitchen has coordinated cupboards and work surfaces, and an integrated gas hob, electric cooker and dishwasher. The dining area has patio doors leading to the rear gardens. There is also a utility room with access to the garden and a ground floor WC.

The first floor consists of a landing with access to the master bedroom, two further bedrooms and a modern family bathroom with floor to ceiling tiles.

Externally, there is a garden to the rear with a range of paved and lawned areas with fenced boundaries and access to an outhouse storage area. The front area offers a driveway providing off street parking and pathway access to the property.



BRUNTON

RESIDENTIAL

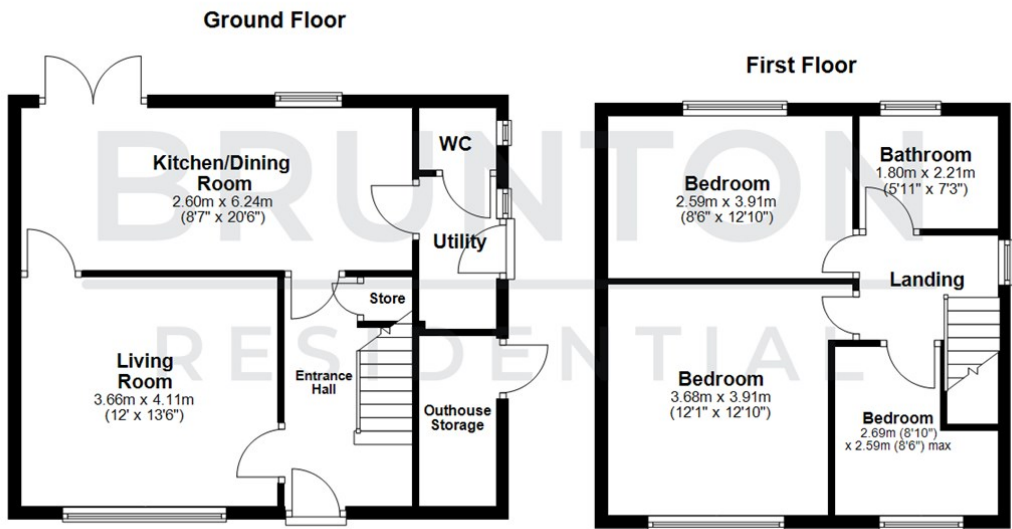
TENURE : Freehold

LOCAL AUTHORITY :

COUNCIL TAX BAND : A

EPC RATING : D

SERVICES :



All measurements are approximate and are for illustration only.
Plan produced using PlanUp.

