

BRUNTON

RESIDENTIAL

T. 01912368347
E. info@bruntonresidential.com
A. Brunton Residential Middleton
W. South, Wagonway Drive, NE13 9BJ



East Brunton Wynd

Great Park, NE13 7BR

BARN CONVERSION - FANTASTIC CONDITION - EXCELLENT LOCATION

Brunton Residential are delighted to offer for sale this fantastic barn conversion located on East Brunton Wynd within Great Park. Brunton Wynd formed part of the original Brunton Farm and offers a rare opportunity to buy a traditional stone property located within one of the North East's most popular locations.

£495,000

4 East Brunton Wynd

Great Park, NE13 7BR



Accommodation briefly comprises; an impressive entrance hallway with staircase to first floor and a G/F W/C. Double doors lead to a large lounge with stone fire place while the side wall features two traditional arched windows with doorway access to the rear gardens. Also from the hallway is the kitchen, this large room has feature vaulted ceilings also with arched windows and door way access leading to the front lawned area. A utility room is plumbed for appliances and has rear access to the gardens. The kitchen has a range of wall and floor units with coordinated Quartz work surfaces and some fitted appliances and finally a sizeable centre island. The first floor provides a master bedroom with ensuite shower room, bedrooms two and three along with a stylish family bathroom. Externally, a lawned town garden offers pay way access to the property while to the rear is a lawned garden with paved area. The side of the property hosts a double driveway providing off street parking and garage access. The garage provides plenty of storage and vehicular parking via two up and over doors.

ON THE GROUND FLOOR

- Hallway
16'5" x 18'8" (5.00m x 5.70m)
- Lounge
20'8" x 18'8" (6.30m x 5.70m)
- Kitchen/Dining Room
16'5" x 28'7" (5.00m x 8.71m)
- Utility
6'8" x 7'8" (2.03m x 2.33m)
- WC

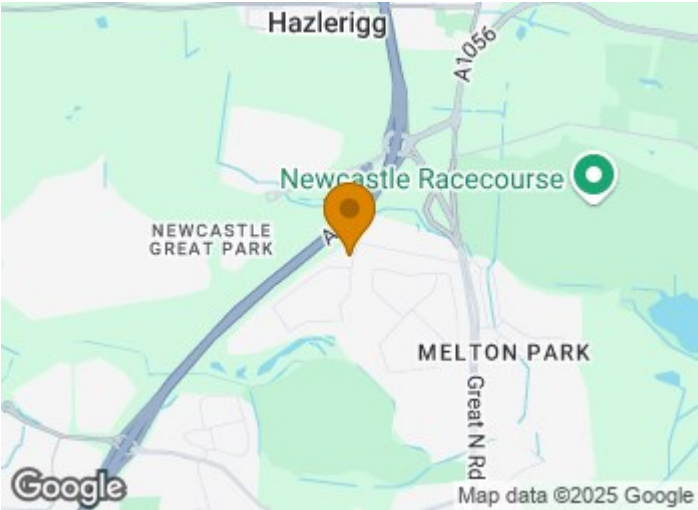
Landing

- Master Bedroom
13'10" x 12'1" (4.21m x 3.69m)
- En-suite
11'3" x 5'9" (3.44m x 1.76m)
- Walk-in Wardrobe
- Bedroom
8'11" x 18'3" (2.72m x 5.55m)
- Bedroom
9'8" x 7'3" (2.94m x 2.22m)

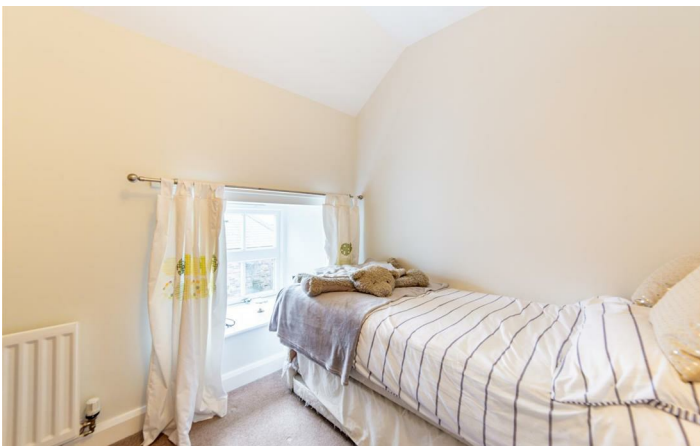
Disclaimer

ON THE FIRST FLOOR

Bathroom



- BARN CONVERSION
- THREE BEDROOMS
- PRIVATE REAR GARDEN
- DOUBLE GARAGE
- FANTASTIC CONDITION
- GREAT LOCATION



Floor Plan

