

BRUNTON

RESIDENTIAL



KINGSLEY AVENUE, MELTON PARK, NE3

Offers Over £475,000

BRUNTON

RESIDENTIAL





BRUNTON

RESIDENTIAL



BRUNTON

RESIDENTIAL



EXTENDED FAMILY HOME | FOUR BEDROOMS | EN SUITE

Brunton Residential are delighted to welcome to the market this extended semi detached family home tucked away on Kingsley Avenue within the sought after Melton Park in Gosforth with four bedrooms, three reception rooms and master en suite. For more information and to book your viewing please call our team on 0191 236 8347.

BRUNTON

RESIDENTIAL



BRUNTON

RESIDENTIAL

Set overlooking the green on Kingsley Avenue is this stunning four bedroom semi detached family home which briefly comprises; porch onto entrance hallway, lounge with bow window, extended kitchen diner with seating area opening onto the rear garden. Utility area with both garden and garage access as well as laundry room/WC.

Off the landing to the first floor there are four well proportioned bedrooms, bedroom one with en-suite bathroom, walk in wardrobe and French doors onto the balcony. There is also the fantastic family bathroom.

Externally there is a block paved drive offering off street parking for multiple vehicles that leads to the double garage. To the rear there is a stunning enclosed garden with patio area, ideal for alfresco entertaining.

For more information and to book your viewing please call our team on 0191 236 8347.

Tenure

The agent understands the property to be freehold. However, this should be confirmed with a licenced legal representative.

Council Tax Band D



BRUNTON

RESIDENTIAL

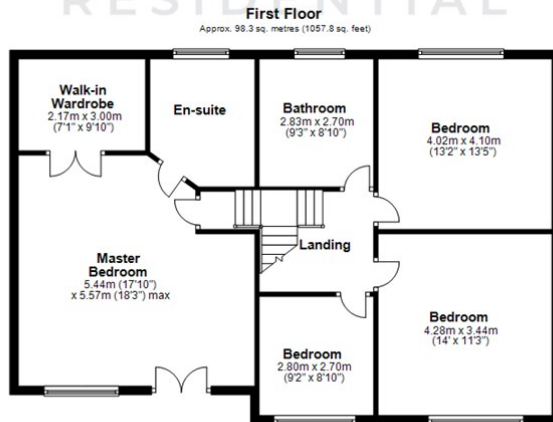
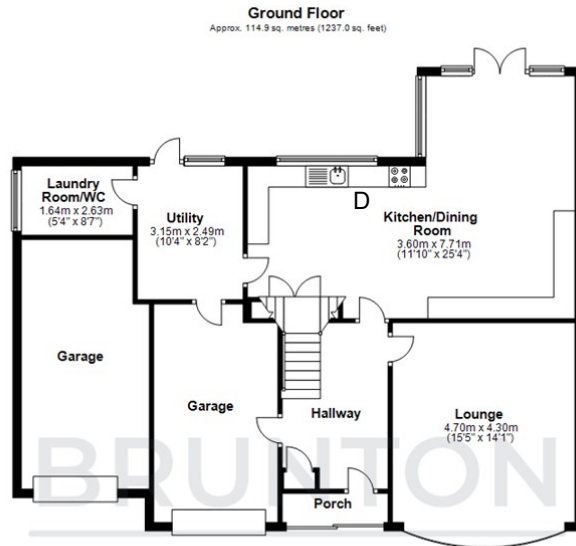
TENURE : Freehold

LOCAL AUTHORITY :

COUNCIL TAX BAND : D

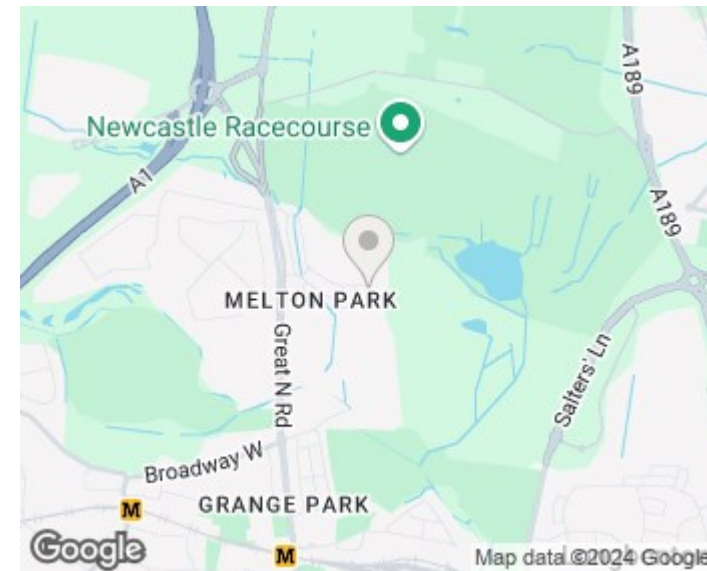
EPC RATING : D

SERVICES :

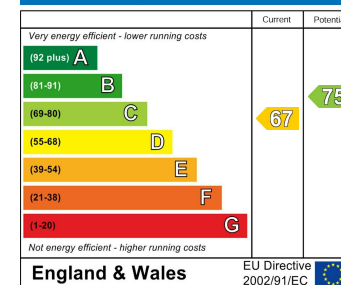


Total area: approx. 213.2 sq. metres (2294.8 sq. feet)

All measurements are approximate and are for illustration only.
Plan produced using PlanUp.



Energy Efficiency Rating



Environmental Impact (CO₂) Rating

