

# BRUNTON

---

## RESIDENTIAL



**DARWIN CRESCENT, KENTON, NE3**

**£179,950**

# BRUNTON

---

## RESIDENTIAL





# BRUNTON

---

## RESIDENTIAL



# BRUNTON

---

## RESIDENTIAL



### POPULAR LOCATION - GREAT VALUE FOR MONEY - FANTASTIC CONDITION

Brunton Residential are delighted to offer this three bedroom family home located on Darwin Crescent within the ever-popular Montagu estate in Kenton. The property is in excellent condition throughout, offers an open-plan kitchen/diner and off-street parking.

# BRUNTON

---

## RESIDENTIAL



# BRUNTON

---

## RESIDENTIAL

Accommodation briefly comprises; entrance hallway leading to bright lounge with window to the front which leads to the kitchen/diner at the rear. There are French doors to the garden and the kitchen itself has a range of wall and floor units, coordinated work surfaces and some fitted appliances. There is a store cupboard and ample space for formal dining. To the first floor are two good-sized double bedrooms, a single bedroom which would make an excellent home office or nursery and a family bathroom with WC, basin and shower over bath.

Externally, to the front is a block paved driveway providing off-street parking and access to the property. To the rear is a garden laid mainly to lawn with patio area and fenced boundaries.



# BRUNTON

## RESIDENTIAL

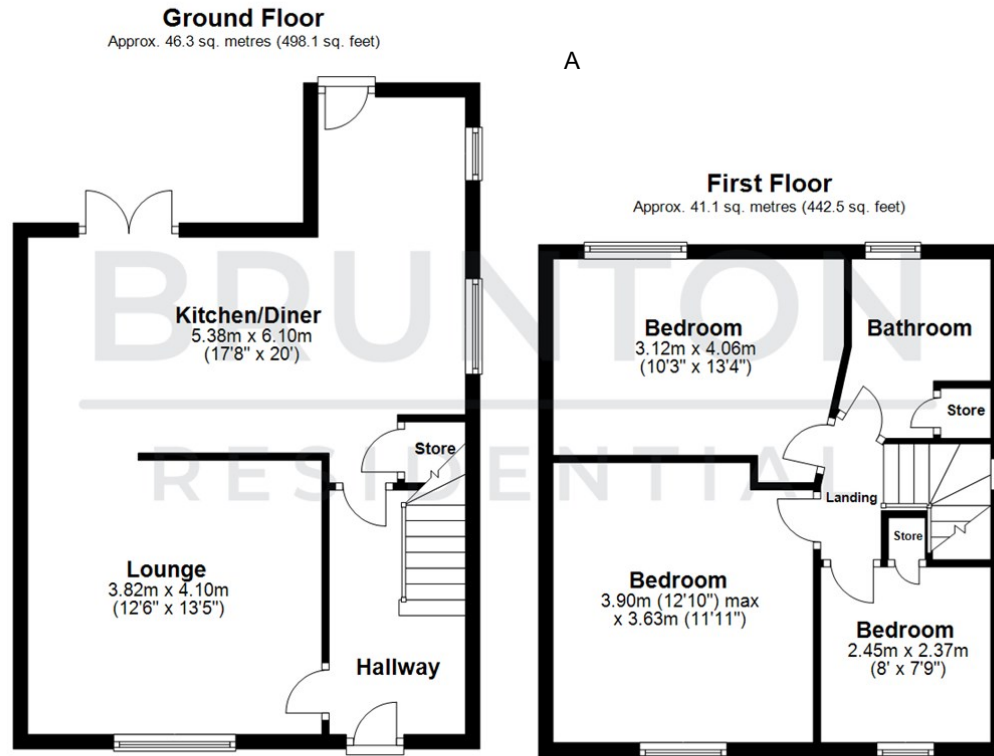
TENURE : Freehold

LOCAL AUTHORITY :

COUNCIL TAX BAND : A

EPC RATING : D

SERVICES :



All measurements are approximate and are for illustration only.  
Plan produced using PlanUp.

