

BRUNTON

RESIDENTIAL



HERON CRESCENT, GREAT PARK, NE13

Offers Over £250,000

BRUNTON

RESIDENTIAL





BRUNTON

RESIDENTIAL



BRUNTON

RESIDENTIAL



**SEMI DETACHED TOWNHOUSE – DETACHED GARAGE & DRIVEWAY - TAYLOR WIMPEY
INGLETON**

Brunton Residential are delighted to offer for sale this 3-bed semi-detached home located on Heron Crescent in Great Park. This home has a fantastic amount of space, a separate detached garage and an open aspect to the front.

BRUNTON

RESIDENTIAL



BRUNTON

RESIDENTIAL

Accommodation briefly comprises of: entrance hallway with access to the kitchen area. The kitchen has a range of wall and floor units with coordinated work surfaces, it has an integrated oven and hob, dishwasher and washing machine. To the rear of the property, there is a full-width lounge with double doors to the rear garden. The first floor hosts a landing with a feature corner window overlooking the parkland area to the front of the property, there are two well sized bedrooms along with a family bathroom in between. The top floor offers an impressive master suite which consists of a bedroom area with dressing space and an en-suite shower room.

Externally there is a small town garden to the front with pathway access to the property while to the rear is a garden with decked areas and fenced boundaries. There is a driveway to the side which offers off-street parking and access to the detached garage.

For more info and to book your viewing, please call our team on 01912368347.



BRUNTON

RESIDENTIAL

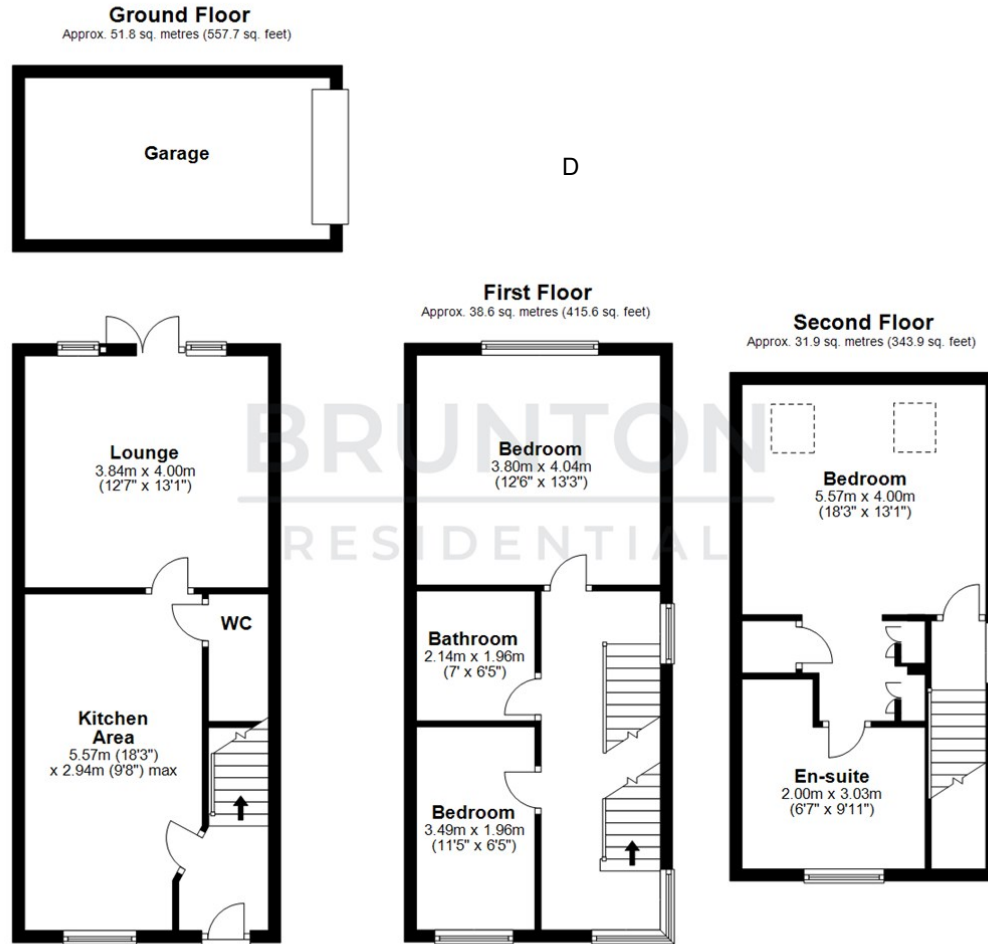
TENURE : Freehold

LOCAL AUTHORITY : Newcastle upon Tyne

COUNCIL TAX BAND : D

EPC RATING : C

SERVICES :



Total area: approx. 122.4 sq. metres (1317.2 sq. feet)

All measurements are approximate and are for illustration only.
Plan produced using PlanUp.

