

BRUNTON

RESIDENTIAL



GREVILLE GARDENS, GREAT PARK, NE13

Offers Over £185,000

BRUNTON

RESIDENTIAL



BRUNTON

RESIDENTIAL

BRUNTON

RESIDENTIAL

SOUGHT AFTER LOCATION - END TERRACE - TOWNHOUSE

Brunton Residential are delighted to offer for sale this three-bedroom, semi-detached townhouse located on Greville Gardens in Great Park. This property is an extremely popular style, in a sought after location and would make an excellent starter home.

BRUNTON

RESIDENTIAL

BRUNTON

RESIDENTIAL

Accommodation briefly comprises of; entrance porch, lounge with window to front, breakfasting kitchen with French door access to rear gardens and an internal hallway with WC & staircase to first floor. The kitchen has a range of wall and floor units with coordinated work surfaces and some fitted appliances. The first floor consists of two bedrooms of similar size with a family bathroom offering WC, basin and shower over bath. The top floor boasts a large master bedroom with ample storage and dormer window to the front.

Externally, there is a rear garden which offers a turfed lawn with patio area and fenced boundaries whilst to the front is a designated parking space with side access to the rear garden.

BRUNTON

RESIDENTIAL

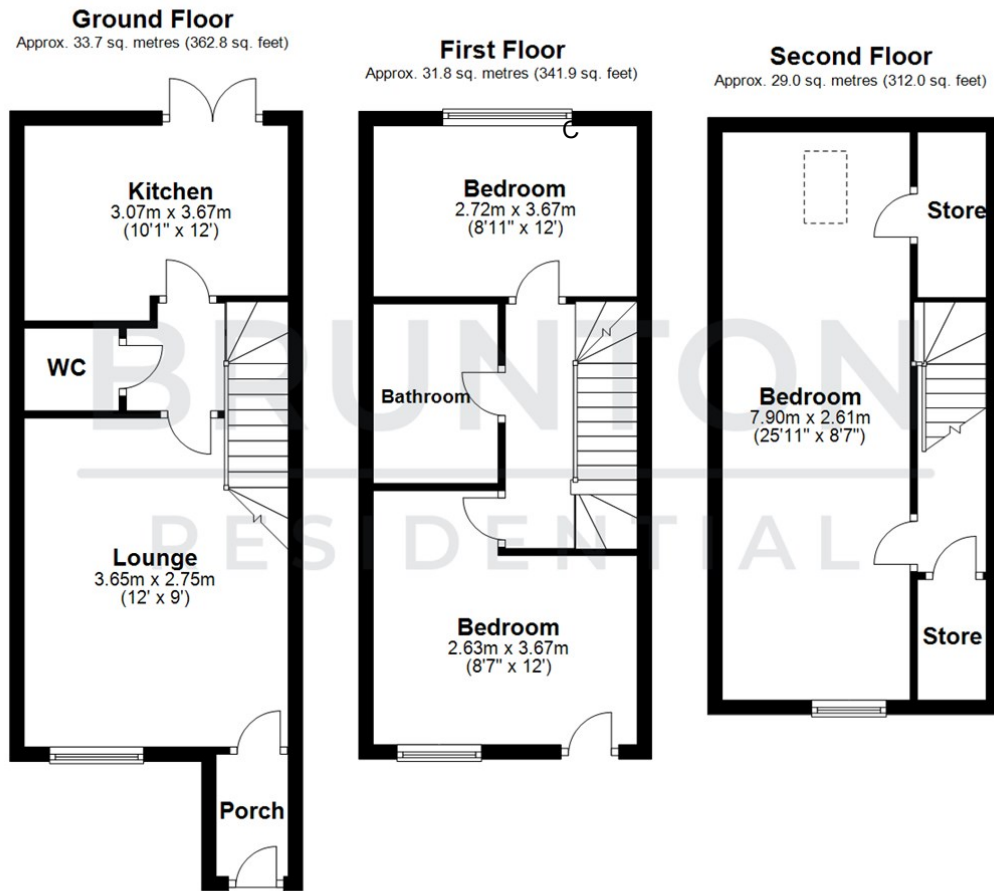
TENURE : Freehold

LOCAL AUTHORITY :

COUNCIL TAX BAND : C

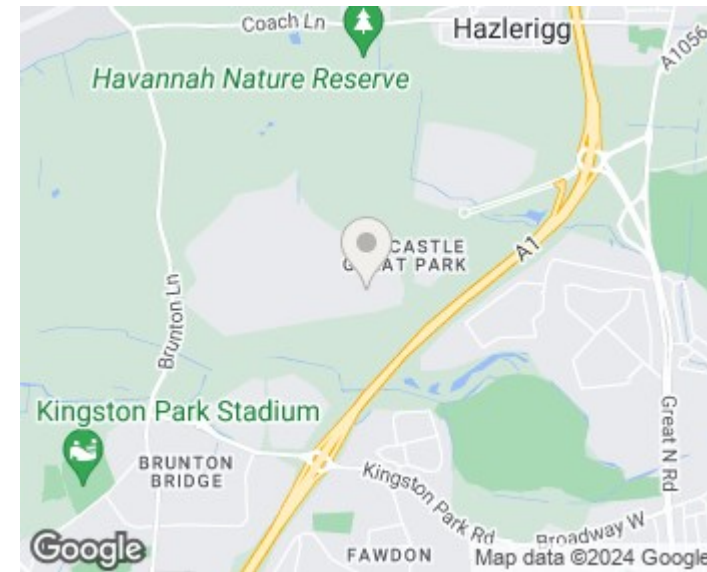
EPC RATING :

SERVICES :



Total area: approx. 94.5 sq. metres (1016.7 sq. feet)

All measurements are approximate and are for illustration only.
Plan produced using PlanUp.



Energy Efficiency Rating		Current	Potential
Very energy efficient - lower running costs			
(92 plus) A			
(81-91) B			
(69-80) C			
(55-68) D			
(39-54) E			
(21-38) F			
(1-20) G			
Not energy efficient - higher running costs			
England & Wales		EU Directive 2002/91/EC	

Environmental Impact (CO ₂) Rating		Current	Potential
Very environmentally friendly - lower CO ₂ emissions			
(92 plus) A			
(81-91) B			
(69-80) C			
(55-68) D			
(39-54) E			
(21-38) F			
(1-20) G			
Not environmentally friendly - higher CO ₂ emissions			
England & Wales		EU Directive 2002/91/EC	