

BRUNTON

RESIDENTIAL



SPECKLEDWOOD WAY, GREAT PARK, NE13

Offers Over £315,000

BRUNTON

RESIDENTIAL





BRUNTON

RESIDENTIAL



BRUNTON

RESIDENTIAL



STYLISH KITCHEN - FOUR BEDROOMS - EXCELLENT CONDITION

Brunton Residential are delighted to offer for sale this four bedroom detached home located on Speckledwood Way in Great Park. This recently built property benefits from a large driveway with integral garage and is in a fantastic condition throughout.

BRUNTON

RESIDENTIAL



BRUNTON

RESIDENTIAL

The accommodation briefly comprises of; entrance hallway providing access to a lounge with a window to the front and double doors to the rear leading to the kitchen/diner. The kitchen is fully fitted with a range of wall and floor units and coordinated work surfaces along with fitted appliances and French doors leading to the rear gardens. A utility area is positioned to the side of the kitchen and is plumbed for washer and dryer. There is a separate WC. The first floor consists of a master bedroom with a stylish ensuite shower room, bedrooms two, three and four and a modern family bathroom.

Externally there is a garden to the rear which is laid mainly to lawn with patio area and fenced boundaries while to the front is a driveway providing off-street parking and access to the integral garage.



BRUNTON

RESIDENTIAL

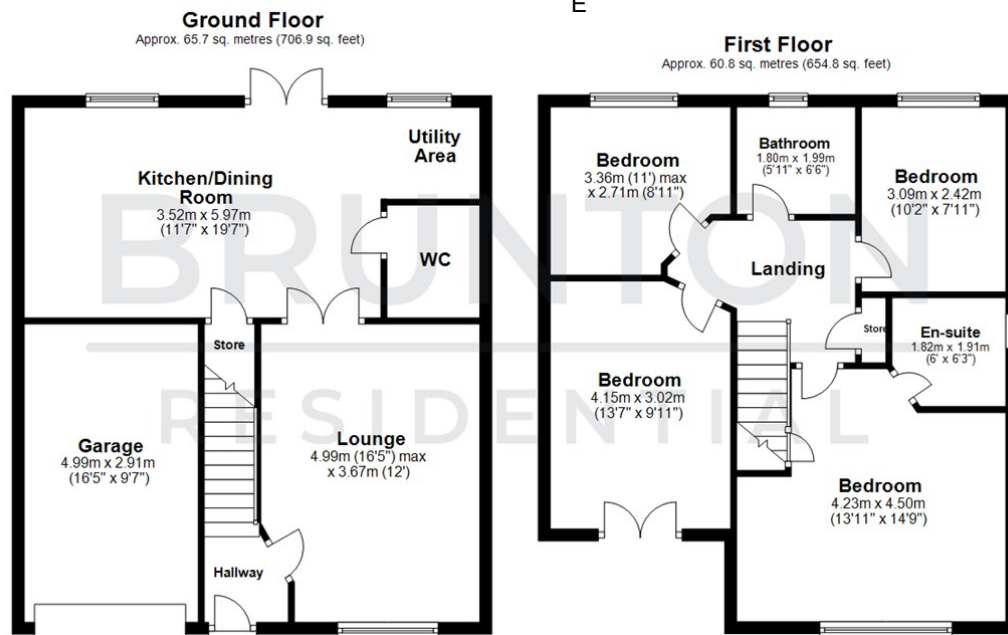
TENURE : Freehold

LOCAL AUTHORITY :

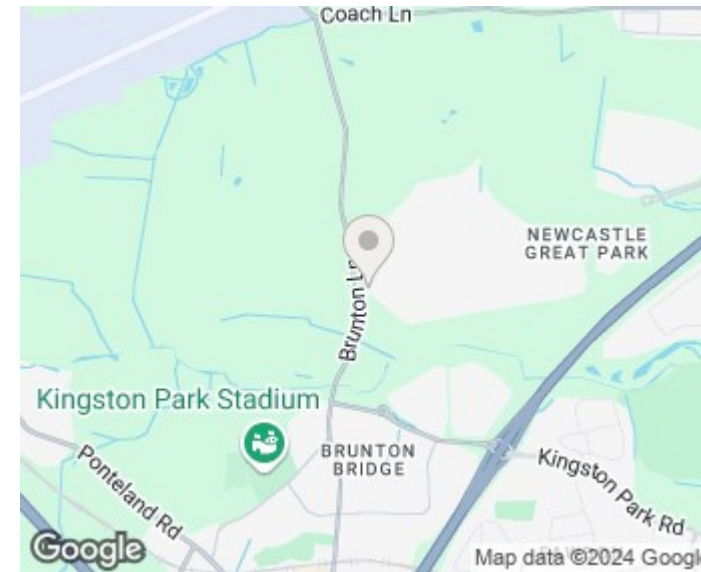
COUNCIL TAX BAND : E

EPC RATING : B

SERVICES :



All measurements are approximate and are for illustration only.
Plan produced using PlanUp.



Energy Efficiency Rating	
	Potential
Very energy efficient - lower running costs	
(92 plus) A	94
(81-91) B	84
(69-80) C	
(55-68) D	
(39-54) E	
(21-38) F	
(1-20) G	
Not energy efficient - higher running costs	
EU Directive 2002/91/EC	
England & Wales	

Environmental Impact (CO ₂) Rating	
	Potential
Very environmentally friendly - lower CO ₂ emissions	
(92 plus) A	
(81-91) B	
(69-80) C	
(55-68) D	
(39-54) E	
(21-38) F	
(1-20) G	
Not environmentally friendly - higher CO ₂ emissions	
EU Directive 2002/91/EC	
England & Wales	