

BRUNTON

RESIDENTIAL



CHELTENHAM CLOSE, NORTH GOSFORTH, NE13

£200,000

BRUNTON

RESIDENTIAL





BRUNTON

RESIDENTIAL



BRUNTON

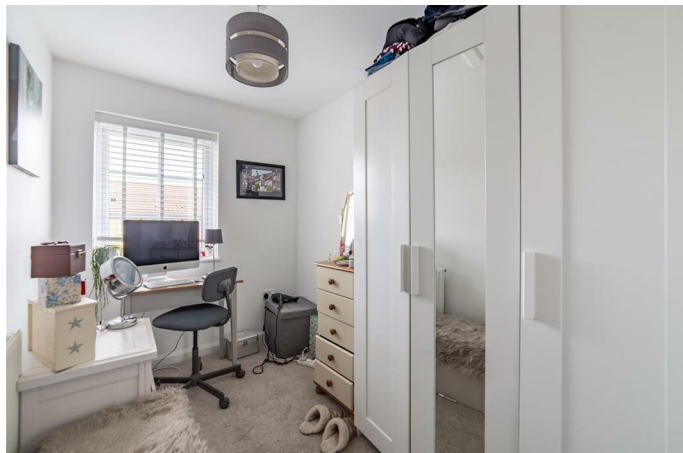
RESIDENTIAL



EXCELLENT LOCATION - THREE BEDROOMS - SPACIOUS LIVING - OFF-ROAD PARKING
Brunton Residential are delighted to offer this excellent semi-detached home located on Cheltenham Close in the ever-popular North Gosforth estate. This home offers spacious living with a private garden area to the rear and off-road parking.

BRUNTON

RESIDENTIAL



BRUNTON

RESIDENTIAL

Accommodation briefly comprises; entrance hallway with stairs leading to the first floor, access to WC, kitchen and full-width living room with French doors to the private rear garden. The kitchen is stylish with a range of fitted floor and wall units, fitted appliances and coordinated work surfaces.

To the first floor; there is the main bedroom with ensuite shower room and a further two bedrooms and a modern family bathroom.

Externally, there is a small town garden to the front with pathway access to the property while to the rear lies a garden with a mix of paved, grass and decked areas and fenced boundaries. The property also benefits from an off-street parking space.



BRUNTON

RESIDENTIAL

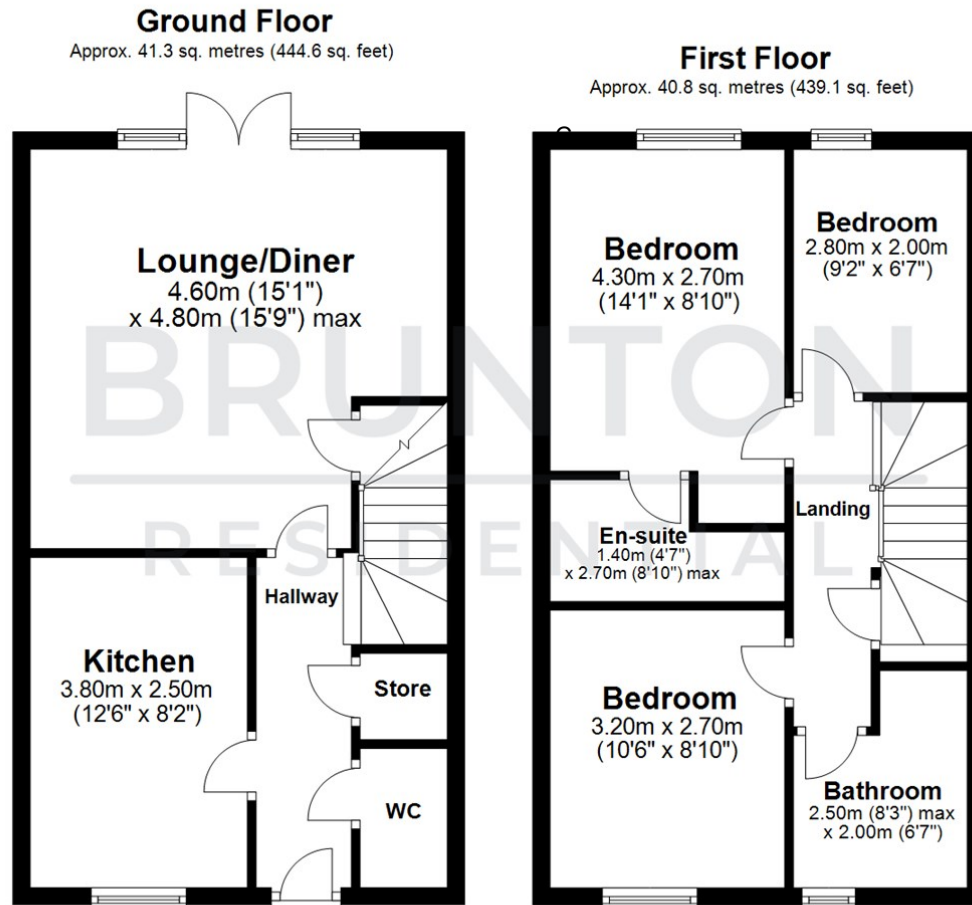
TENURE : Freehold

LOCAL AUTHORITY :

COUNCIL TAX BAND : C

EPC RATING : B

SERVICES :



All measurements are approximate and are for illustration only.
Plan produced using PlanUp.



Energy Efficiency Rating		Current	Potential
Very energy efficient - lower running costs			96
(92 plus) A		84	
(81-91) B			
(69-80) C			
(55-68) D			
(39-54) E			
(21-38) F			
(1-20) G			
Not energy efficient - higher running costs			
EU Directive 2002/91/EC			

Environmental Impact (CO ₂) Rating		Current	Potential
Very environmentally friendly - lower CO ₂ emissions			
(92 plus) A			
(81-91) B			
(69-80) C			
(55-68) D			
(39-54) E			
(21-38) F			
(1-20) G			
Not environmentally friendly - higher CO ₂ emissions			
EU Directive 2002/91/EC			