

BRUNTON

RESIDENTIAL



WILLOWBAY DRIVE, GREAT PARK NE13

£199,000

BRUNTON

RESIDENTIAL





BRUNTON

RESIDENTIAL



BRUNTON
RESIDENTIAL



PERFECT STARTER HOME - THREE BEDROOMS - END TERRACE

Brunton Residential are pleased to offer to the market this well presented, three bedroom 'Seaton' style property. Located on Willowbay Drive, Great Park, the property is close to local schools and amenities and would make an excellent first time buy. Great Park also provides easy access to transport links including the A1, as well as central Gosforth and Newcastle City Centre.

BRUNTON

RESIDENTIAL



BRUNTON

RESIDENTIAL

The Seaton is an extremely popular house style, this example comes with the additional benefits of being end-terraced, as well as having a dormer window to the top floor bedroom. Internally the property is spacious and bright, briefly comprising: entrance, lounge with storage cupboard, breakfasting kitchen with French doors to the rear garden, there is also a ground floor WC. To the first floor there are two double bedrooms and the family bathroom, the second floor has a large double bedroom and separate storage cupboard.

Externally the property has an open outlook to the front, there is a generous rear garden and allocated parking space.

Viewing is highly recommended, act fast to avoid disappointment.



BRUNTON

RESIDENTIAL

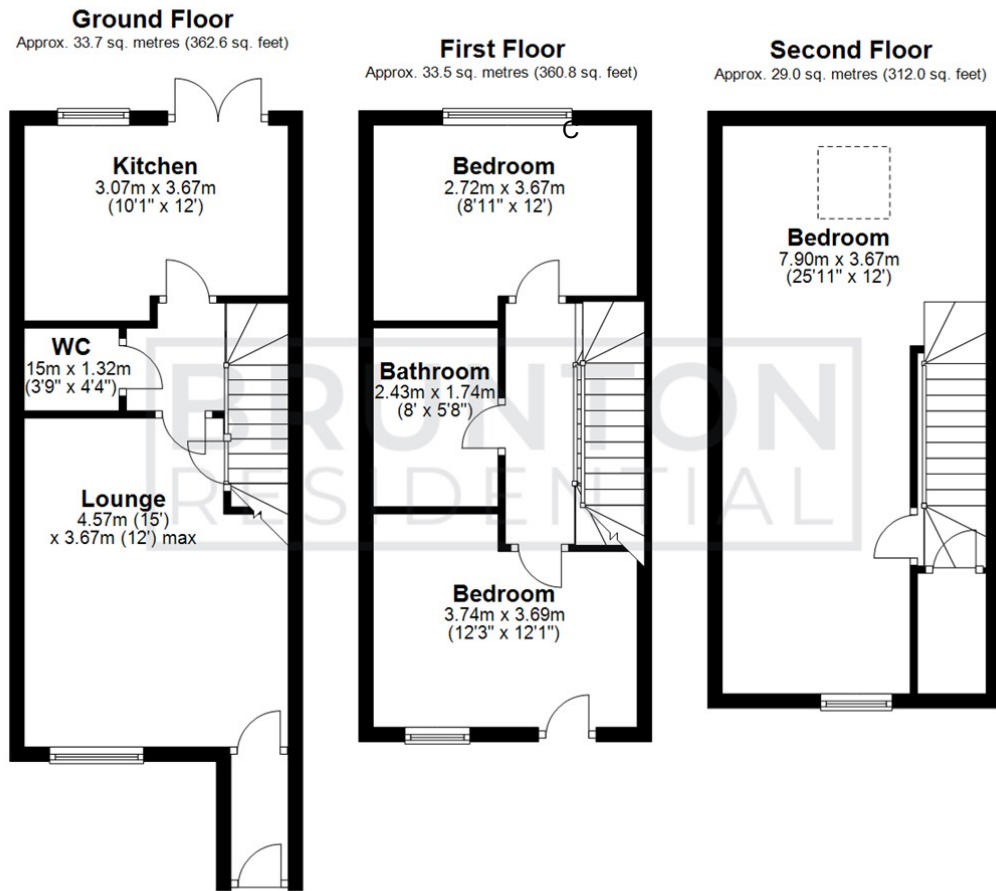
TENURE : Freehold

LOCAL AUTHORITY :

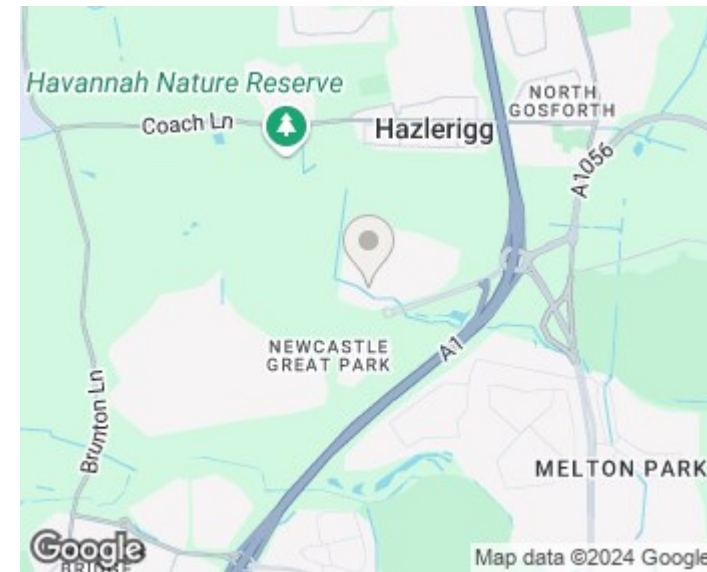
COUNCIL TAX BAND : C

EPC RATING : B

SERVICES :



All measurements are approximate and are for illustration only.
Plan produced using PlanUp.



Energy Efficiency Rating	
Current	Potential
83	94
Very energy efficient - lower running costs (92 plus) A (81-91) B (69-80) C (55-68) D (39-54) E (21-38) F (1-20) G Not energy efficient - higher running costs	
EU Directive 2002/91/EC	
England & Wales	

Environmental Impact (CO ₂) Rating	
Current	Potential
Very environmentally friendly - lower CO ₂ emissions (92 plus) A (81-91) B (69-80) C (55-68) D (39-54) E (21-38) F (1-20) G Not environmentally friendly - higher CO ₂ emissions	
EU Directive 2002/91/EC	
England & Wales	