

BRUNTON

RESIDENTIAL

T. 01912368347
E. info@bruntonresidential.com
A. Brunton Residential Middleton
W. South, Wagonway Drive, NE13 9BJ



Sunflower Drive

Brunton Rise Great Park, NE13 9FA

STUNNING CONDITION - GREAT LOCATION - OPEN ASPECT TO FRONT

Brunton Residential are delighted to offer for sale this semi detached home located on Sunflower Drive in the brand new Brunton Rise development in Great Park. This home has a fantastic amount of space, it is in immaculate condition and has a totally open aspect to the front.

Offers Over £260,000

17 Sunflower Drive

Brunton Rise Great Park, NE13 9FA



Accommodation briefly comprises of: entrance hallway with access to the kitchen area & GF WC. The kitchen has a range of wall and floor units with coordinated work surfaces and fitted appliances. To the rear of the property there is a full width lounge with double doors to the rear gardens. There WC is positioned in between the two rooms. The first floor offers two well sized bedrooms along with a family bathroom in between. A door on the first floor landing leads to the staircase to the top floor, an impressive master suite consists of a bedroom area with dressing space incorporating fitted wardrobes and a well appointed ensuite shower room is accessed to the side.

Externally there is a small town garden to the front with pathway access to the property while to the rear is a lawned garden with trees and fenced boundaries. The garden has been widened to the side. There is a long driveway to the side of the property which offers off street parking.

For more info and to book your viewing, please call our sales team on 01912368347.

ON THE GROUND FLOOR

Entrance Hall

Living Room

10'11" x 16'1" (3.34m x 4.91m)

WC

Kitchen

11'7" x 7'11" (3.54m x 2.42m)

Cupboard

ON THE FIRST FLOOR

Landing

Bedroom

14'4" x 16'1" (4.38m x 4.91m)

Bathroom

Bedroom

10'1" x 8'8" (3.08m x 2.63m)

ON THE SECOND FLOOR

Landing

Master Bedroom

22'7" x 11'3" (6.89m x 3.43m)

En-suite

9'5" x 4'0" (2.88m x 1.23m)

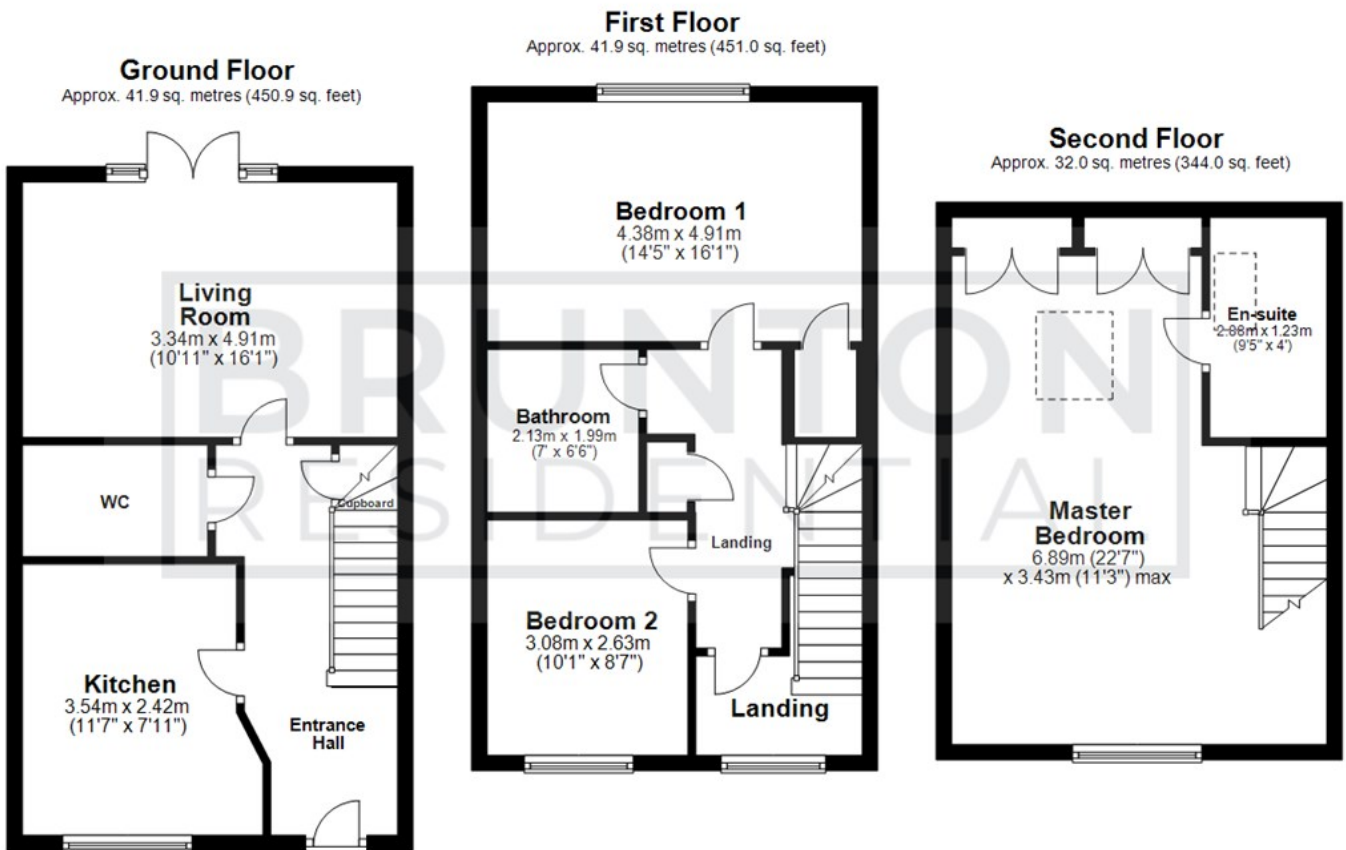
Disclaimer



- THREE BEDROOM HOME
- GREAT LOCATION
- NEARLY NEW
- FANTASTIC CONDITION
- OPEN ASPECT TO THE FRONT
- LARGER GARDEN



Floor Plan



All measurements are approximate and are for illustration only.
Plan produced using PlanUp.

These particulars, whilst believed to be accurate are set out as a general outline only for guidance and do not constitute any part of an offer or contract. Intending purchasers should not rely on them as statements of representation of fact, but must satisfy themselves by inspection or otherwise as to their accuracy. No person in this firm's employment has the authority to make or give any representation or warranty in respect of the property.

