

BRUNTON

RESIDENTIAL

T. 01912368347
E. info@bruntonresidential.com
A. Brunton Residential Middleton
W. South, Wagonway Drive, NE13 9BJ



Highbury

Jesmond, NE2 3BX

360 VIRTUAL TOUR - FIVE BEDROOMS - OVERLOOKING THE TOWN MOOR

Brunton Residential are delighted to offer to the market this well presented maisonette, located on one of Jesmond's most sought-after terraces, Highbury. With open views over the Town Moor, the ever desirable Highbury is well placed to take advantage of all that Jesmond has to offer, is within walking distance of the City Centre, and is also close to some of our fantastic open green spaces.

Offers Over £450,000

3 Highbury

Jesmond, NE2 3BX



Jesmond is home to a range of independent shops, cafes, restaurants and bars, as well as some of the most popular private schools in the region. The City Centre is a short walk or bike ride away, whilst the wider area is accessible via West Jesmond Metro, or the many bus routes on the Great North Road.

Internally, this generously proportioned property is immaculately presented throughout, featuring a range of period features throughout, including fireplaces and cornicing in many of the rooms. Briefly comprising: communal entrance hall leading to the private entrance, stairs up to the first floor landing, to the front of the property is the spacious lounge with bay window overlooking the allotments and the Town Moor. To the rear of the hallway is the recently fitted kitchen with integrated appliances including 5 ring gas hob, oven and separate microwave and dishwasher. Two of the bedrooms are also found on the first floor, as well as the main bathroom.

The second floor features three further bedrooms, two with impressive en-suites.

Externally there is a private rear yard accessed off the kitchen, and on-street permit parking is available.

Viewing is necessary to appreciate the standard of the accommodation on offer, we anticipate high levels of interest.

TO THE GROUND FLOOR

Entrance Hall

Inner Hallway

TO THE FIRST FLOOR

Hall

Living Room

19'7" x 14'5" (5.98m x 4.40m)

Kitchen

11'4" x 9'2" (3.45m x 2.80m)

Bedroom 1

16'1" x 14'5" (4.90m x 4.40m)

Bedroom 2

11'2" x 6'11" (3.40m x 2.10m)

Bathroom

TO THE SECOND FLOOR

Hallway

Bedroom 3

13'11" x 10'4" (4.23m x 3.15m)

En-suite

Bedroom 4

18'4" x 14'5" (5.58m x 4.40m)

En-suite Bathroom

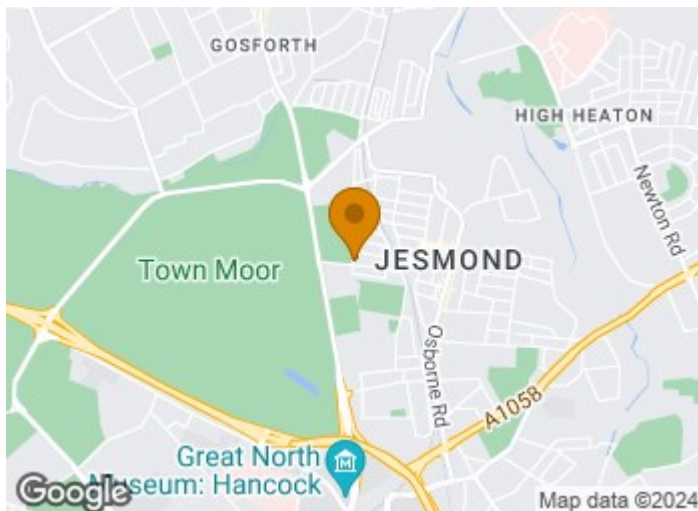
8'2" x 14'5" (2.49m x 4.40m)

Bedroom 5

12'4" x 6'11" (3.77m x 2.10m)

Cupboard

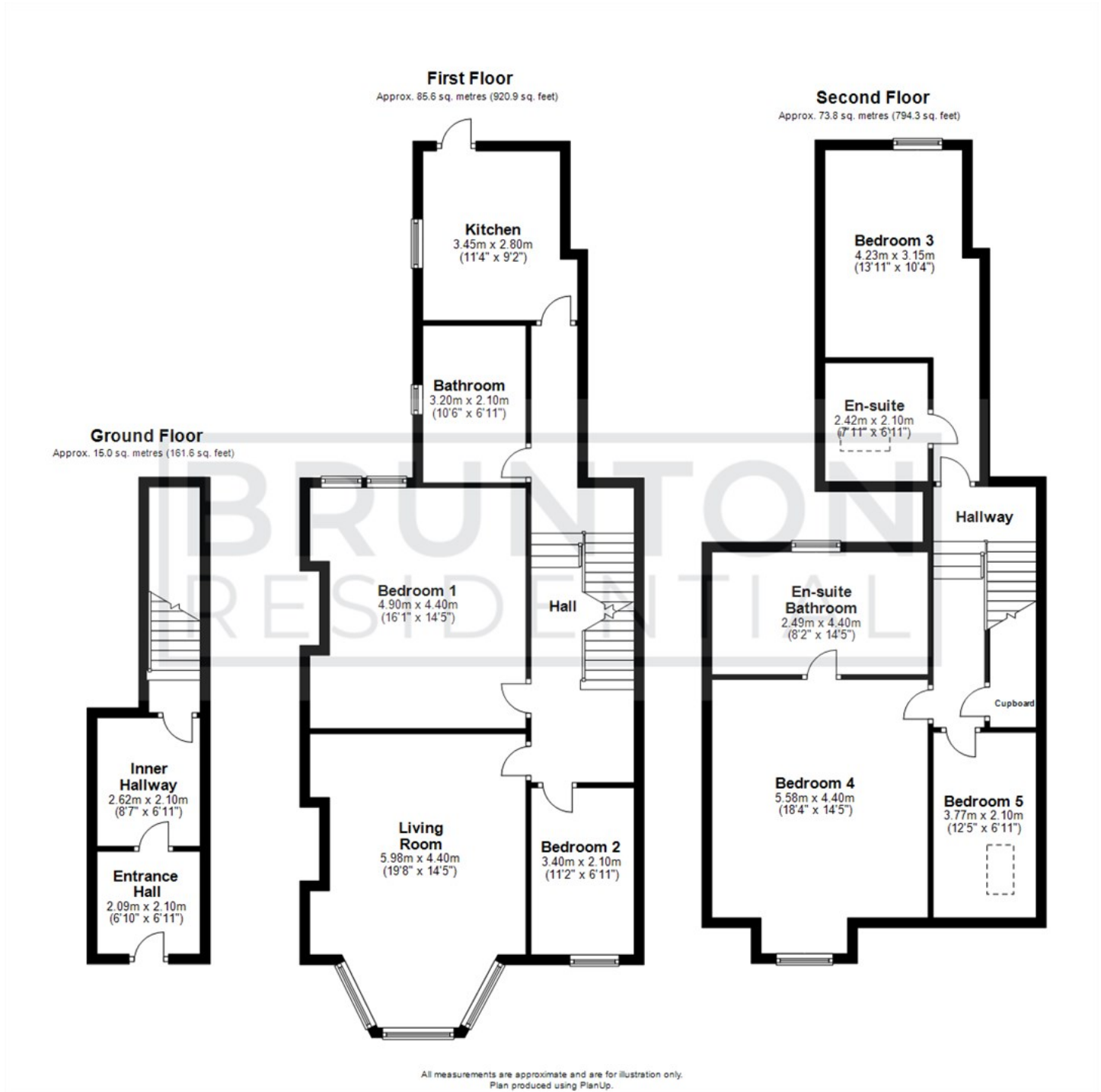
Disclaimer.



- **360 VIRTUAL TOUR**
- TWO STOREY MAISONETTE
- THREE BATHROOMS
- PRESTIGIOUS LOCATION
- OVERLOOKING THE TOWN MOOR
- SPACIOUS AND BRIGHT
- FIVE BEDROOMS
- IMMACULATE PRESENT
- SHARED FRONT ENTRANCE



Floor Plan



These particulars, whilst believed to be accurate are set out as a general outline only for guidance and do not constitute any part of an offer or contract. Intending purchasers should not rely on them as statements of representation of fact, but must satisfy themselves by inspection or otherwise as to their accuracy. No person in this firm's employment has the authority to make or give any representation or warranty in respect of the property.

