

BRUNTON

RESIDENTIAL



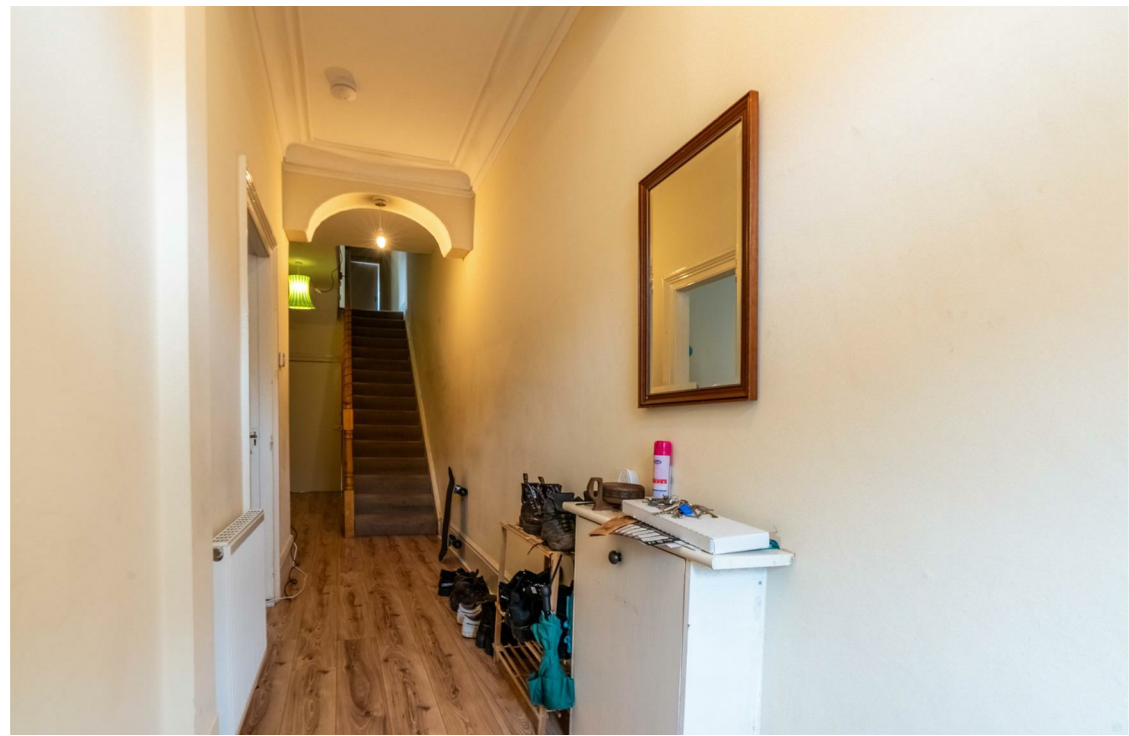
ROTHBURY TERRACE, HEATON, NE6

Offers Over £250,000

BRUNTON

RESIDENTIAL





BRUNTON

RESIDENTIAL





4 BEDROOM HOUSE - FAMILY HOME POTENTIAL - 2 RECEPTION ROOMS

Fantastic opportunity to buy this large four bedroom two reception house situated in the centre of Heaton on Rothbury Terrace. Currently used as a 4 bedroom hmo rental property achieving £1,352pcm and is tenanted until September 2024. This property offers an excellent chance for those looking for a large family home in a great location within Heaton. The property would be ideal to be turned back into a family property and comes with a large rear yard with parking options.

BRUNTON

RESIDENTIAL



BRUNTON

RESIDENTIAL

5 BEDROOM HOUSE - FAMILY HOME POTENTIAL - HMO LICENCE IN PLACE

Fantastic opportunity to buy this large five bedroom house situated in the heart of Heaton on Rothbury Terrace. Currently used as a rental property the property has purposefully not been pre-let for 2024-25 and is tenanted until Summer. This property offers an excellent chance for those looking for a large family home in a great location within Heaton. The property would be ideal to be turned back into a family home and comes with a large rear yard with parking options, Some modernisation would be needed in the property.



BRUNTON

RESIDENTIAL

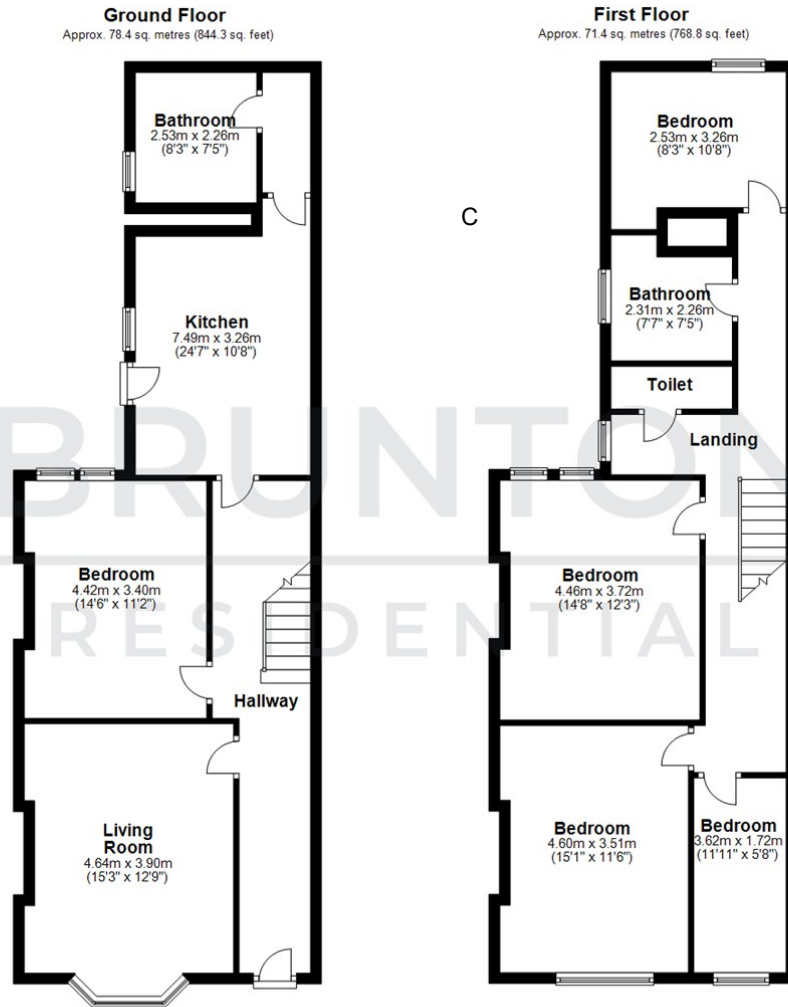
TENURE : Freehold

LOCAL AUTHORITY :

COUNCIL TAX BAND : C

EPC RATING : C

SERVICES :



Total area: approx. 149.9 sq. metres (1613.1 sq. feet)

All measurements are approximate and are for illustration only.
Plan produced using PlanUp.

