

BRUNTON

RESIDENTIAL



WARWICK STREET, HEATON, NE6

Offers Over £165,000

BRUNTON

RESIDENTIAL





BRUNTON
RESIDENTIAL



BRUNTON

RESIDENTIAL

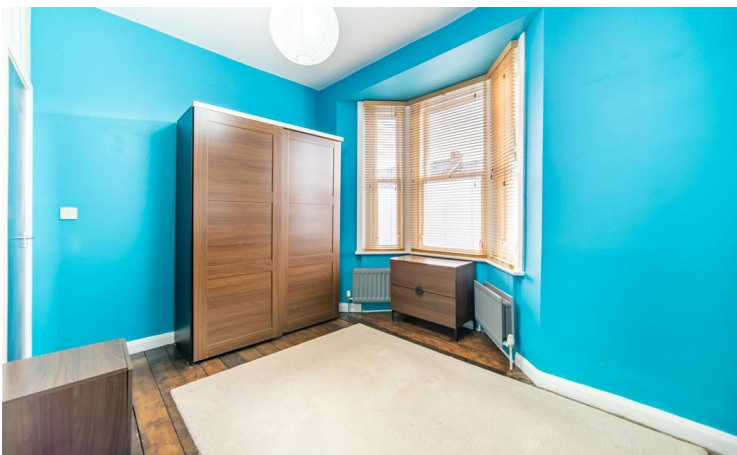


UPPER TYNESIDE FLAT - POPULAR LOCATION - TENANTED UNTIL DECEMBER 2024

Brunton Residential are delighted to bring to the market this fantastic three bedroom upper flat situated in the popular area of heaton, this property has great space throughout and would make an ideal first time home. Located on Warwick Street, close proximity to the hustle and bustle that Heaton offers, and close to the City Centre. The property is currently tenanted until December 2024 @ £1,000pcm

BRUNTON

RESIDENTIAL



BRUNTON

RESIDENTIAL

Accommodation briefly comprises of: entrance hall leading to the stairs up to the first floor, a main bedroom with a double wardrobe, chest of drawers and two bedside cabinets, a second bedroom with a large wardrobe, and an additional room which is a great size to be used as a bedroom or as an office. There is a bathroom room with a shower/bath, wash basin and WC, the living room is spacious with a storage unit. The kitchen is fully equipped with appliances, an electric oven with hob, a washing machine, and a fridge freezer. Externally there is a private rear yard.



BRUNTON

RESIDENTIAL

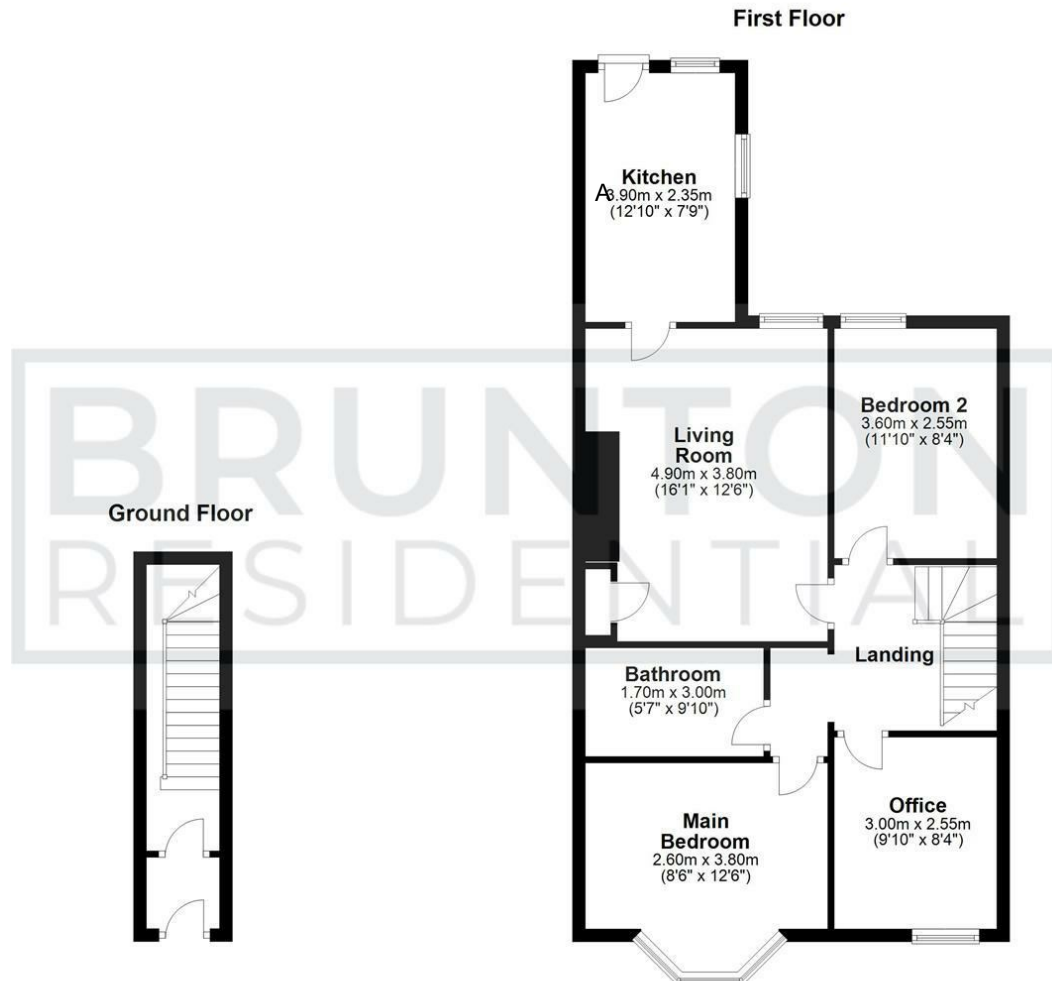
TENURE : Leasehold

LOCAL AUTHORITY :

COUNCIL TAX BAND : A

EPC RATING : D

SERVICES :



All measurements are approximate and are for illustration only.
Plan produced using PlanUp.



Energy Efficiency Rating		Current	Potential
Very energy efficient - lower running costs			
(92 plus)	A		
(81-91)	B		
(69-80)	C		
(55-68)	D	68	71
(39-54)	E		
(21-38)	F		
(1-20)	G		
Not energy efficient - higher running costs			
England & Wales		EU Directive 2002/91/EC	

Environmental Impact (CO ₂) Rating		Current	Potential
Very environmentally friendly - lower CO ₂ emissions			
(92 plus)	A		
(81-91)	B		
(69-80)	C		
(55-68)	D		
(39-54)	E		
(21-38)	F		
(1-20)	G		
Not environmentally friendly - higher CO ₂ emissions			
England & Wales		EU Directive 2002/91/EC	