

BRUNTON

RESIDENTIAL



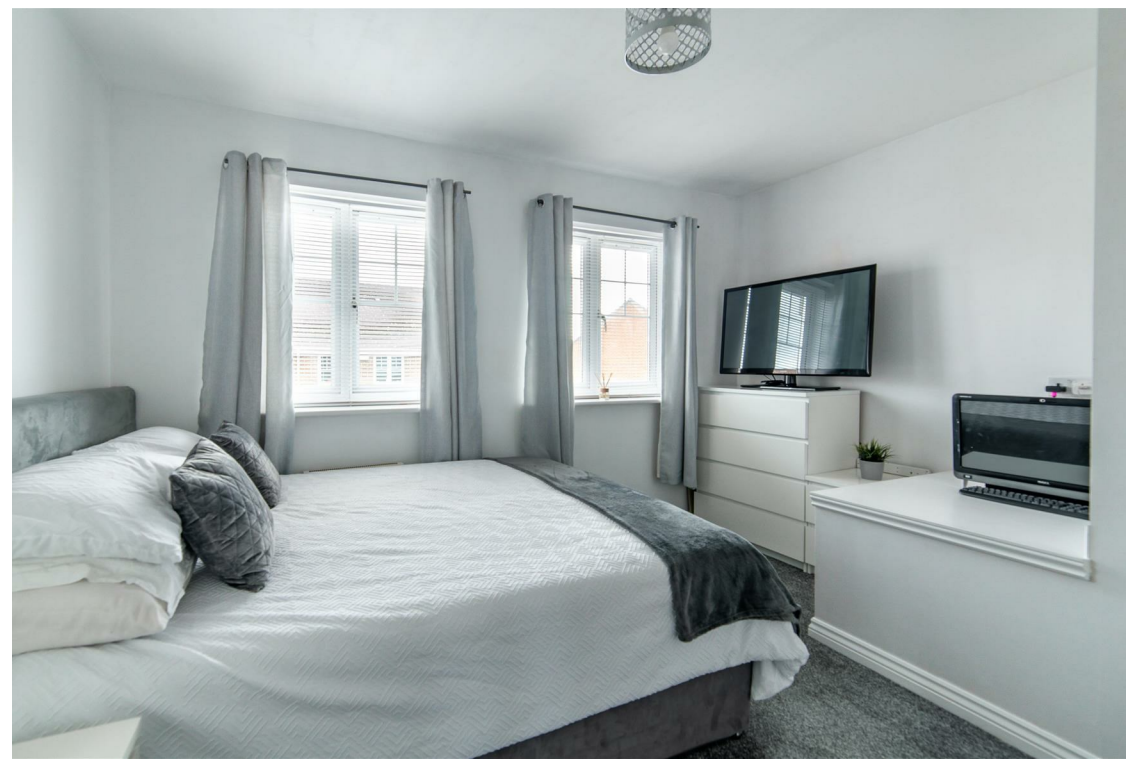
SKENDLEBY DRIVE, KENTON, NE3

Offers Over £139,950

BRUNTON

RESIDENTIAL





BRUNTON

RESIDENTIAL



BRUNTON

RESIDENTIAL

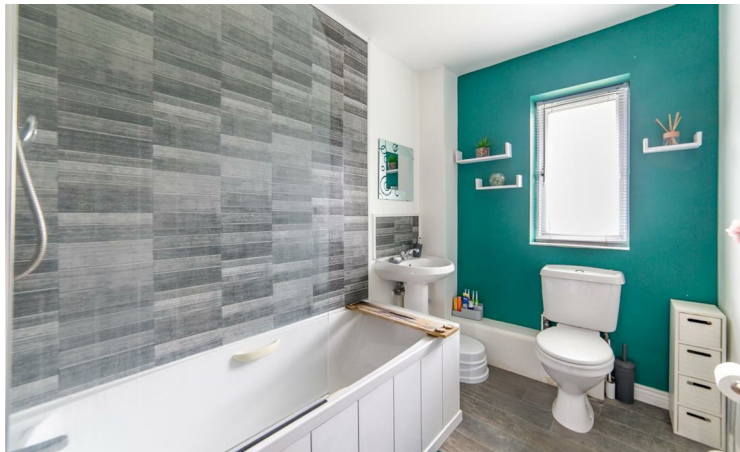


TWO BEDROOMS - PERFECT STARTER HOME - POPULAR LOCATION

Brunton Residential are delighted to offer for sale this two bedroom home located on Skendleby Drive in Kenton. This property offers ample living space, front and rear gardens and would make an excellent starter home or investment opportunity.

BRUNTON

RESIDENTIAL



BRUNTON

RESIDENTIAL

Accommodation briefly comprises; entrance hallway with access to store cupboard and downstairs WC. There is a kitchen to the front of the property with a range of wall and floor units, coordinated work surfaces and some fitted appliances. To the rear of the property is a large lounge area with French doors leading to the rear garden. To the first floor is a large master bedroom to the front with a second double bedroom and family bathroom to the rear. Externally, there is a small, low maintenance, town garden to the front and a great garden to the rear. The property also benefits from an assigned parking space.



BRUNTON

RESIDENTIAL

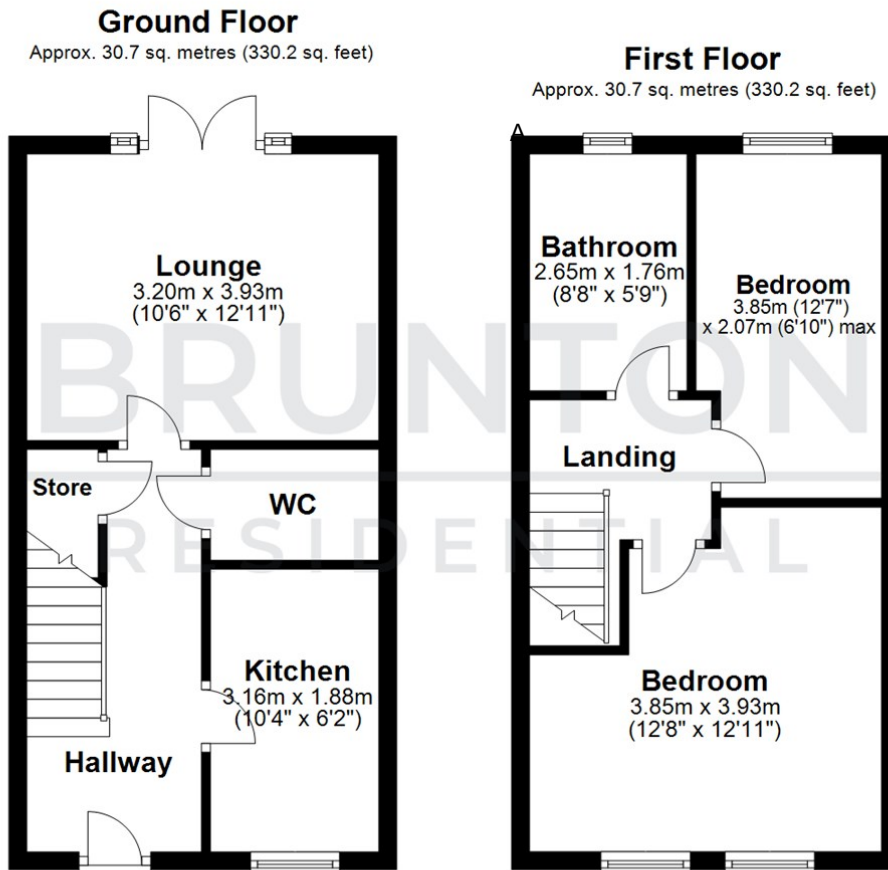
TENURE : Freehold

LOCAL AUTHORITY :

COUNCIL TAX BAND : A

EPC RATING : C

SERVICES :



Total area: approx. 61.4 sq. metres (660.5 sq. feet)

All measurements are approximate and are for illustration only.
Plan produced using PlanUp.



Energy Efficiency Rating		Current	Potential
Very energy efficient - lower running costs			
(92 plus) A			86
(81-91) B			
(69-80) C		73	
(55-68) D			
(39-54) E			
(21-38) F			
(1-20) G			
Not energy efficient - higher running costs			
England & Wales		EU Directive 2002/91/EC	

Environmental Impact (CO ₂) Rating		Current	Potential
Very environmentally friendly - lower CO ₂ emissions			
(92 plus) A			
(81-91) B			
(69-80) C			
(55-68) D			
(39-54) E			
(21-38) F			
(1-20) G			
Not environmentally friendly - higher CO ₂ emissions			
England & Wales		EU Directive 2002/91/EC	