

BRUNTON

RESIDENTIAL

T. 01912368347
E. info@bruntonresidential.com
A. Brunton Residential Middleton
W. South, Wagonway Drive, NE13 9BJ



Featherstone Grove

Gosforth, NE3 5RJ

LARGE FAMILY HOME - POPULAR LOCATION - FIVE/SIX BEDROOMS

Brunton Residential are delighted to offer this substantial townhouse located on Featherstone Grove on Melbury, Great Park. This property offers ample and flexible living spaces over its generous 3 floors and would make a fantastic family home in an ever popular location.

£525,000

56 Featherstone Grove

Gosforth, NE3 5RJ



The accommodation briefly comprises; a large entrance porch which leads to the spacious hallway with access to a ground floor reception room currently used as a snug, a ground-floor bedroom which could easily be utilised as a home office or play room as well as a dining room with French doors leading to the rear gardens and the kitchen/diner. The kitchen has a range of wall and floor units with coordinated work surfaces and some fitted appliances.

The first floor offers a fantastic lounge with a large bay window and two other windows to the front allowing natural light to flood the space. To the rear is a double bedroom with en-suite shower room. There is a dressing room on the first floor with fitted wardrobes and dressing table and this room could easily be converted to an additional bedroom.

The top floor consists of a large master to the front with en-suite shower room. The top floor also hosts two further bedrooms and a family bathroom. Externally, to the front is a small town garden with fenced boundary and pathway access to the property. The south-west facing rear garden is laid with artificial lawn and has a garden shed, walled boundaries and access to the garage.

ON THE GROUND FLOOR

Porch

Hallway

WC

Snug

12'8" x 10'2" (3.87m x 3.10m)

Office / Bedroom

8'11" x 8'8" (2.71m x 2.64m)

Kitchen/Diner

19'4" x 11'4" (5.90m x 3.45m)

Dining Room

10'7" x 12'9" (3.22m x 3.88m)

Garage

23'11" x 12'0" (7.31m x 3.67m)

ON THE FIRST FLOOR

Landing

Lounge

15'1" x 24'4" (4.61m x 7.42m)

Bedroom

10'6" x 17'1" (3.20m x 5.20m)

En-suite

10'5" x 6'11" (3.20m x 2.12m)

Dressing Room

8'6" x 11'10" (2.60m x 3.60m)

ON THE SECOND FLOOR

Landing

Bedroom

14'10" x 16'11" (4.53m x 5.16m)

En-suite

12'8" x 7'1" (3.87m x 2.16m)

Bedroom

10'8" x 11'6" (3.24m x 3.51m)

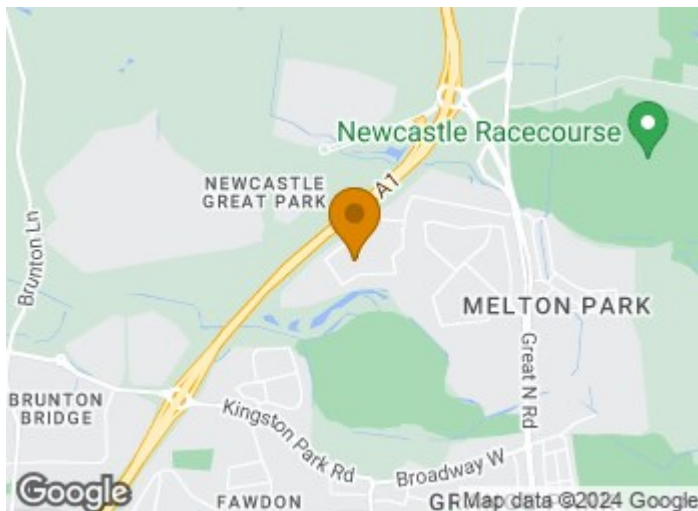
Bedroom

10'8" x 12'6" (3.24m x 3.81m)

Bathroom

8'4" x 8'3" (2.56m x 2.52m)

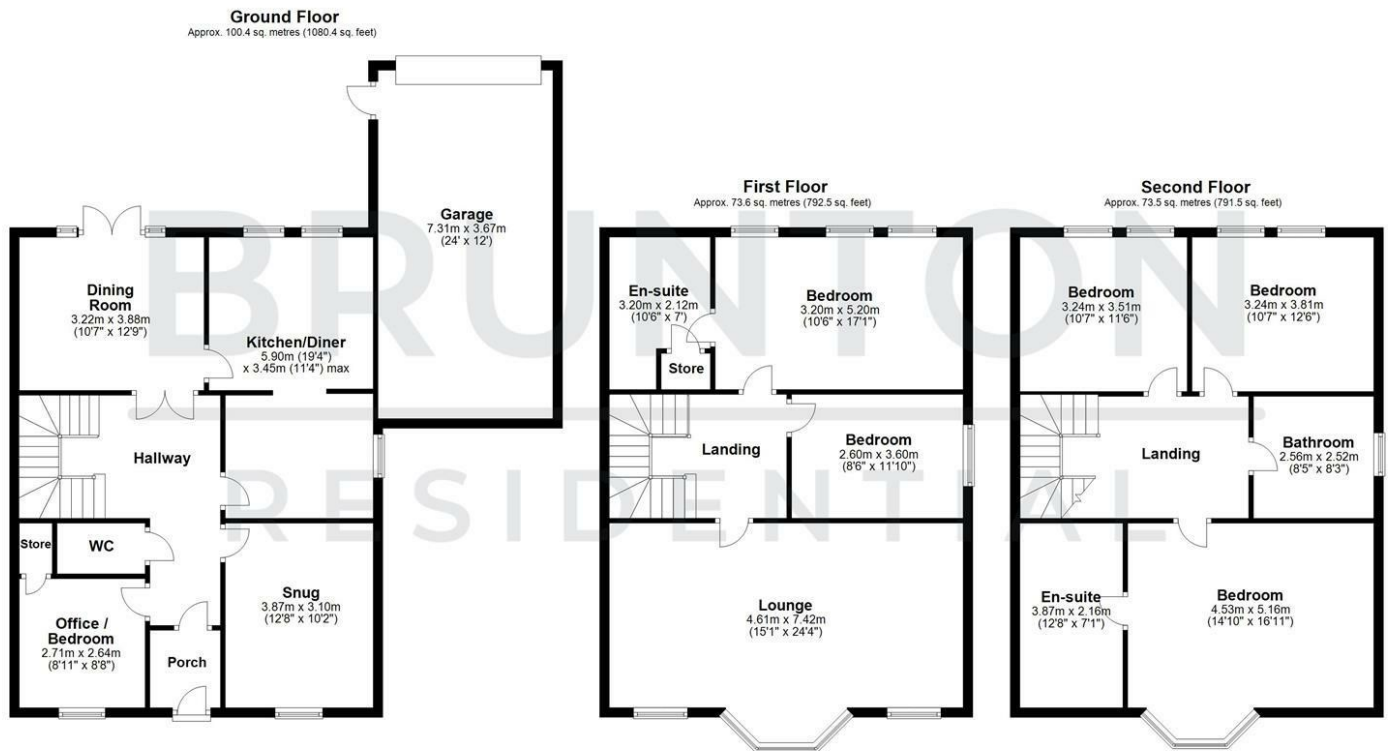
Disclaimer



- SPACIOUS FAMILY HOME
- TOWNHOUSE
- SOUTH-WEST FACING REAR GARDEN
- FLEXIBLE LIVING SPACE
- POPULAR LOCATION
- FIVE BEDROOMS
- GARAGE & DRIVEWAY



Floor Plan



Total area: approx. 247.5 sq. metres (2664.4 sq. feet)
All measurements are approximate and are for illustration only.
Plan produced using PlanUp.

These particulars, whilst believed to be accurate are set out as a general outline only for guidance and do not constitute any part of an offer or contract. Intending purchasers should not rely on them as statements of representation of fact, but must satisfy themselves by inspection or otherwise as to their accuracy. No person in this firm's employment has the authority to make or give any representation or warranty in respect of the property.

