

BRUNTON

RESIDENTIAL



SIMON PLACE, WIDEOPEN, NE13

Offers Over £234,500

BRUNTON

RESIDENTIAL





BRUNTON

RESIDENTIAL



BRUNTON

RESIDENTIAL



FIVE BEDROOMS - SOUGHT AFTER LOCATION - QUIET CUL-DE-SAC

Brunton Residential are delighted to offer this extended, five bedroom semi-detached home located on Simon Place in Wideopen. This home is located in a quiet cul-de-sac, offers front and rear gardens and would make an excellent family home.

BRUNTON

RESIDENTIAL



BRUNTON

RESIDENTIAL

Accommodation briefly comprises; entrance porch with store cupboard which leads to a spacious lounge with staircase to the first floor and large window to the front which leads to the dining room with door to rear garden.. To the rear of the property is the kitchen and utility area which provides a range of wall and floor units with coordinated work surfaces and some fitted appliances. To the first floor are two double bedrooms with fitted wardrobes, there are two single bedrooms which would make excellent nursery or home office whilst the fifth bedroom could also accommodate a double bed and furniture. Externally, the property has a lawned garden to the front with driveway providing off-street parking and there is pathway access to the property and garage. To the rear is another lawned garden with patio area and fenced boundaries.

Tenure

The agent understands the property to be leasehold. However, this should be confirmed with a licenced legal representative.



BRUNTON

RESIDENTIAL

TENURE : Leasehold

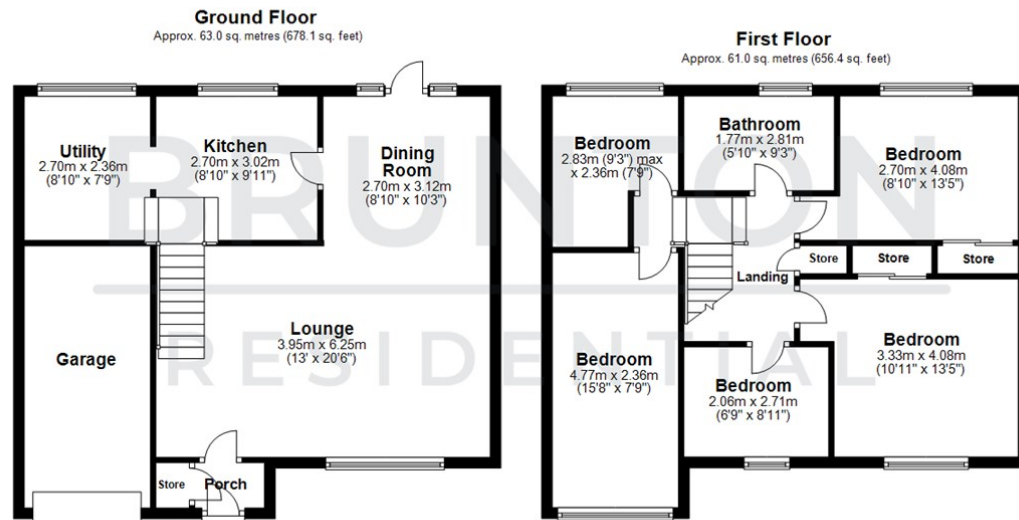
LOCAL AUTHORITY :

COUNCIL TAX BAND : C

EPC RATING : C

SERVICES :

C



Total area: approx. 124.0 sq. metres (1334.5 sq. feet)

All measurements are approximate and are for illustration only.
Plan produced using PlanUp.

