

BRUNTON

RESIDENTIAL

T. 01912368347
E. info@bruntonresidential.com
A. Brunton Residential Middleton
W. South, Wagonway Drive, NE13 9BJ



High Ridge

Hazlerigg Newcastle Upon Tyne, NE13 7ND

THREE BEDROOM - DETACHED - SOUGHT AFTER LOCATION

Brunton Residential are delighted to bring to the market this spacious three bedroom property located in High Ridge, North Gosforth. This home has an excellent open space throughout offering great space and excellent size rooms. Situated a short walk away from local amenities, call our office to book a viewing on 0191-236 8347

Offers Over £200,000

34 High Ridge

Hazlerigg Newcastle Upon Tyne, NE13 7ND



Accommodation briefly comprises of; Porch entrance guiding you into a welcoming hallway that opens up to a spacious front living room which features a large bay window allowing plenty of natural light looking out onto the front field. Adjacent to this inviting room, a second reception room with ample space offers views to the rear of the property. The kitchen featuring a practical dining space allows fantastic room for hosting with a selection of coordinated cupboards and workspace. Seamless access from the kitchen leads to a generously sized garage, while a separate WC and cloakroom add practical convenience to the main floor.

To the first floor, where a gracefully designed landing allows access to an impressively proportioned master bedroom with exceptional built in storage. Additional to this space offers two additional generously sized bedrooms, creating a great balance between comfort and convenience. This floor is equipped with a great family bathroom, completing this residence with both style and substance.

To the rear of the property is a privately paved garden with fenced boundaries however the impressive garden here lies to the front and side of the property where you have ample lawned space with a paved pathway leading to the property, this area also offers off street parking.

ON THE GROUND FLOOR

Porch

5'0" x 8'2" (1.52m x 2.49m)

Hallway

10'10" x 6'9" (3.30m x 2.05m)

Living Room

13'9" x 12'6" (4.18m x 3.80m)

Living Room

14'3" x 12'6" (4.34m x 3.80m)

Dining Room

11'10" x 6'9" (3.61m x 2.05m)

Kitchen

20'10" x 6'10" (6.35m x 2.09m)

WC

5'10" x 3'3" (1.77m x 0.99m)

Cloakroom

5'10" x 3'3" (1.77m x 1.00m)

Garage

8'8" x 10'5" (2.65m x 3.18m)

ON THE FIRST FLOOR

Landing

Bedroom

13'9" x 11'5" (4.18m x 3.47m)

Bathroom

8'4" x 7'10" (2.54m x 2.40m)

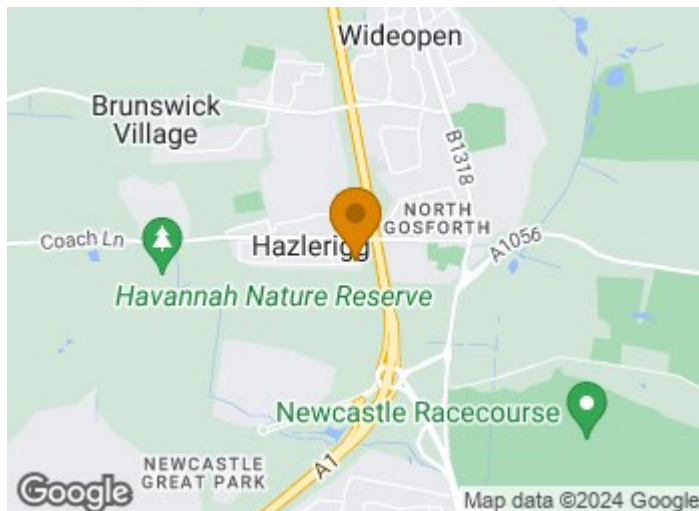
Bedroom

11'2" x 11'5" (3.40m x 3.47m)

Bedroom

12'1" x 7'10" (3.68m x 2.40m)

Disclaimer



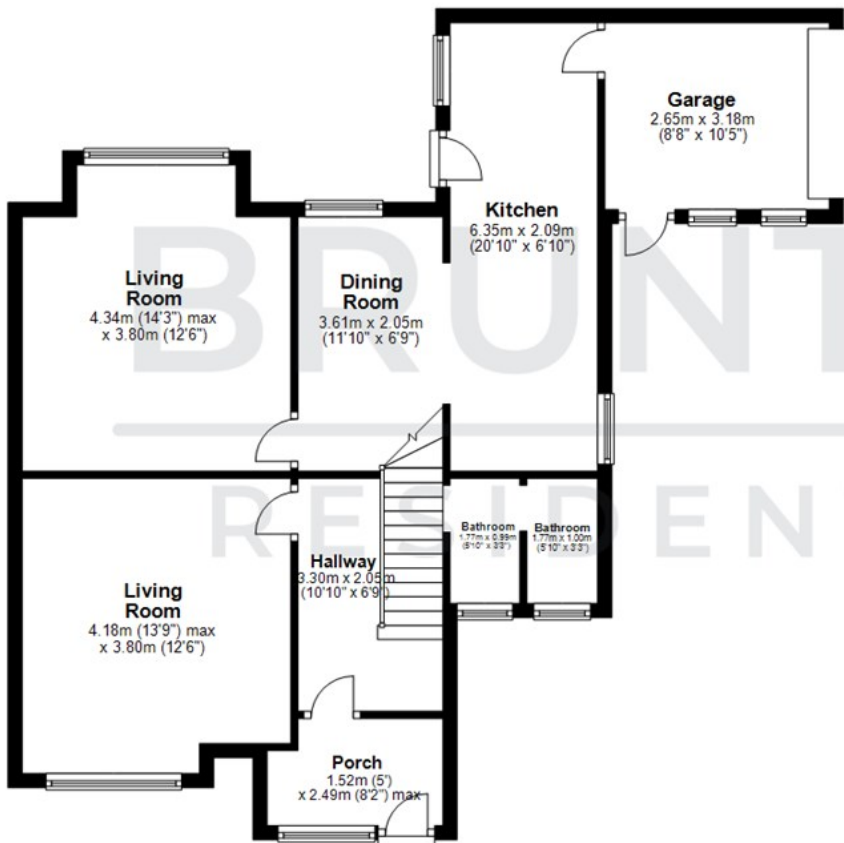
- THREE BEDROOM
- SEMI DETACHED
- TWO RECEPTION ROOMS
- GARAGE
- WIDEOPEN
- NORTH GOSFORTH
- 360 VIRTUAL TOUR
- SOUGHT AFTER LOCATION



Floor Plan

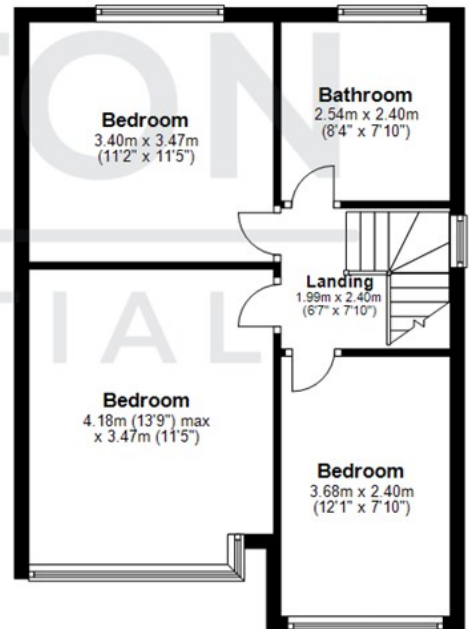
Ground Floor

Approx. 76.4 sq. metres (822.6 sq. feet)



First Floor

Approx. 47.3 sq. metres (508.9 sq. feet)



Total area: approx. 123.7 sq. metres (1331.5 sq. feet)

All measurements are approximate and are for illustration only.
Plan produced using PlanUp.

These particulars, whilst believed to be accurate are set out as a general outline only for guidance and do not constitute any part of an offer or contract. Intending purchasers should not rely on them as statements of representation of fact, but must satisfy themselves by inspection or otherwise as to their accuracy. No person in this firm's employment has the authority to make or give any representation or warranty in respect of the property.

