

BRUNTON

RESIDENTIAL



HERON CRESCENT, GREAT PARK, NE13

Offers Over £138,000

BRUNTON

RESIDENTIAL





BRUNTON

RESIDENTIAL



BRUNTON

RESIDENTIAL



POPULAR LOCATION - GROUND FLOOR - ALLOCATED PARKING

Brunton Residential are delighted to offer this ground floor apartment located on Heron Crescent in Great Park.

The property is situated on a corner plot and offers two well-sized double bedrooms and is located close to local amenities including schools, shops and restaurants.

BRUNTON

RESIDENTIAL



BRUNTON

RESIDENTIAL

Accommodation comprises; entrance hallway with access to an open plan lounge/kitchen area, the lounge offers French door access to an outdoor lawned space. The kitchen offers a range of wall and floor units with coordinated work surfaces and some fitted appliances. There are two bedrooms of similar size with space for wardrobes. There is a fitted bathroom with a shower over the bath.

Externally, there are a range of managed communal areas along with a private allocated parking space. For more info and to book viewings please call our sales team on 01912368347.

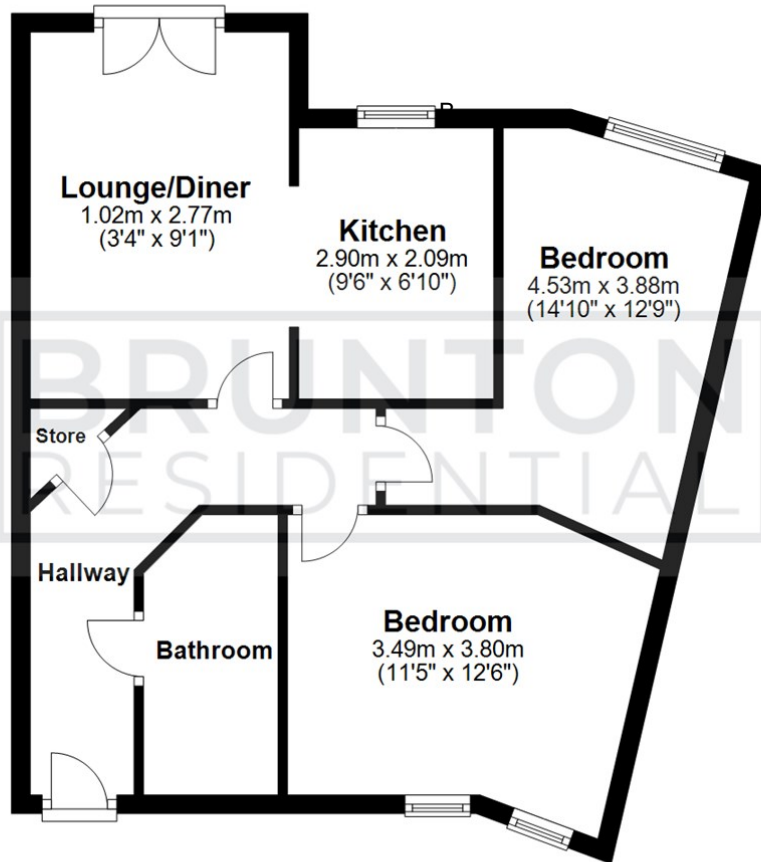


BRUNTON

RESIDENTIAL

Ground Floor

Approx. 48.5 sq. metres (522.2 sq. feet)



Total area: approx. 48.5 sq. metres (522.2 sq. feet)

All measurements are approximate and are for illustration only.
Plan produced using PlanUp.

TENURE : Leasehold

LOCAL AUTHORITY :

COUNCIL TAX BAND : B

EPC RATING : C

SERVICES :



Energy Efficiency Rating		Current	Potential
Very energy efficient - lower running costs			
(92 plus) A			
(81-91) B			
(69-80) C		77	77
(55-68) D			
(39-54) E			
(21-38) F			
(1-20) G			
Not energy efficient - higher running costs			
England & Wales		EU Directive 2002/91/EC	

Environmental Impact (CO ₂) Rating		Current	Potential
Very environmentally friendly - lower CO ₂ emissions			
(92 plus) A			
(81-91) B			
(69-80) C			
(55-68) D			
(39-54) E			
(21-38) F			
(1-20) G			
Not environmentally friendly - higher CO ₂ emissions			
England & Wales		EU Directive 2002/91/EC	