

# BRUNTON

---

## RESIDENTIAL

T. 01912368347  
E. info@bruntonresidential.com  
A. Brunton Residential Middleton  
W. South, Wagonway Drive, NE13 9BJ



## Queensway

Brunton Park, NE3 5NS

FIVE BEDROOM HOME - EXTENDED - LARGE DRIVEWAY WITH GARAGE

Brunton Residential are delighted to offer for sale this semi detached home located on Queensway within Brunton Park. This property is on one of the estates most popular streets, it has ample parking facilities and is in fantastic condition throughout.

Offers Over £400,000

# 26 Queensway

Brunton Park, NE3 5NS



Accommodation briefly comprises; entrance hallway with staircase to first floor and a recently fitted WC, there is a large lounge with walk in bay window and feature fireplace with multi-fuel stove. To the rear of the property is a full width kitchen dining room, this open plan space provides a range of areas suitable for relaxation, dining and food preparation areas, it offers doors and windows over the rear gardens along with a door to a large utility room which in turn, leads to the integral garage. Double doors separate the lounge and kitchen.

On the first floor there is a sizeable master bedroom with fitted wardrobes, four further bedrooms and a stylish family bathroom WC. The property as a whole is in an excellent condition throughout with little work to be done. Externally, there is a large multi car driveway to the front offering off street parking and garage access while to the rear is a lawned garden with decked area and fenced boundaries.

## ON THE GROUND FLOOR

Hallway

WC

Lounge

13'5" x 13'1" (4.10m x 4.00m)

Kitchen/Dining Room

12'2" x 32'2" (3.70m x 9.81m)

Utility Room

7'7" x 11'10" (2.31m x 3.60m)

Garage

Landing

Bedroom

12'10" x 11'4" (3.90m x 3.46m)

Bedroom

9'2" x 11'4" (2.80m x 3.46m)

Bedroom

7'11" x 9'6" (2.42m x 2.90m)

Bedroom

13'5" x 10'8" (4.10m x 3.25m)

Bedroom

12'2" x 10'8" (3.70m x 3.25m)

Bathroom

Disclaimer

## ON THE FIRST FLOOR

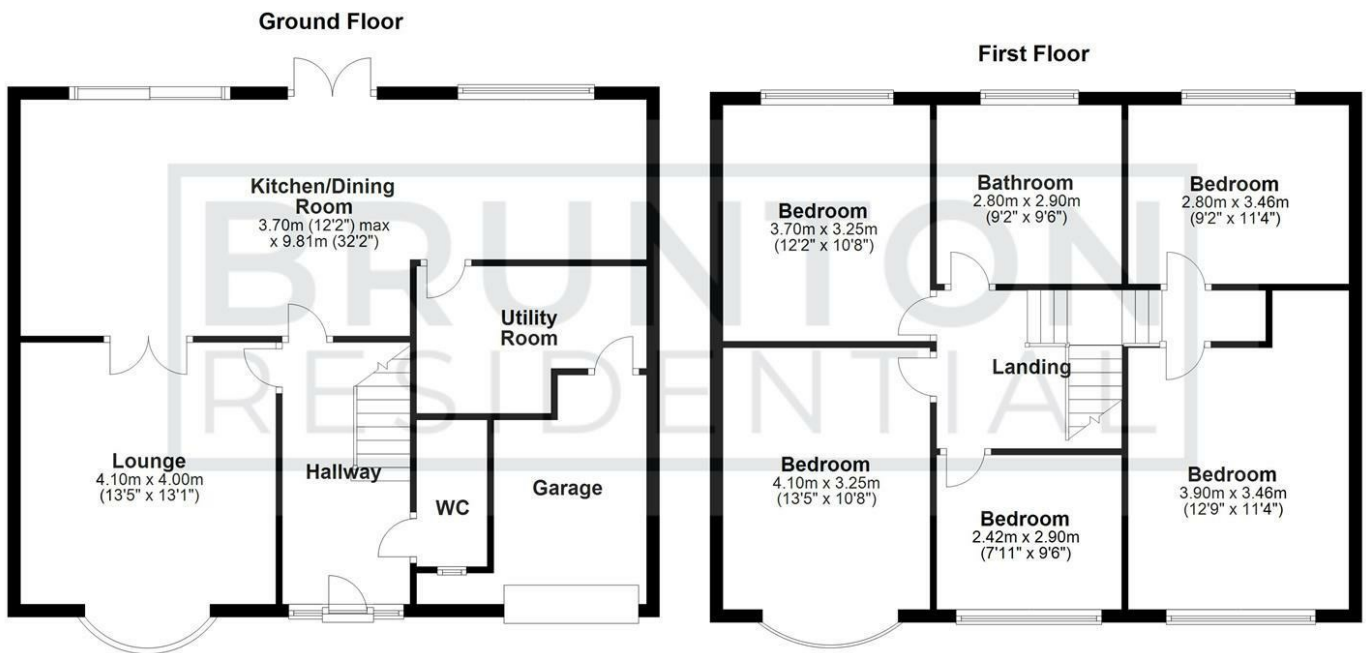


- FIVE BEDROOM HOME
- FANTASTIC CONDITION
- MULTI-CAR DRIVEWAY
- INTEGRAL GARAGE
- EXCELLENT CONDITION
- FANTASTIC KITCHEN





# Floor Plan



All measurements are approximate and are for illustration only.  
Plan produced using PlanUp.

These particulars, whilst believed to be accurate are set out as a general outline only for guidance and do not constitute any part of an offer or contract. Intending purchasers should not rely on them as statements of representation of fact, but must satisfy themselves by inspection or otherwise as to their accuracy. No person in this firm's employment has the authority to make or give any representation or warranty in respect of the property.

