



Sutherland Apartments, Ebury SW1, London

£3,950 Per Month

- 2 Bedroom / 2 Bathroom
- Landscaped Terrace
- 100% Electric Powered Homes
- Walking distance to Sloane Square and Victoria Station
- Prime central London location of SW1 - (Zone 1)
- Private Residents Lounge
- Exclusive Residents Meeting Rooms
- 12 hour concierge (24 hour security)
- Private Residents Facilities
- Close to 11 Michelin-Star Restaurants

Type 7 2 Bedroom Apartment

1.05 / 2.05 / 3.08 / 5.08 /
6.08 / 7.08 / 8.08 / 9.08 /
10.08 / 11.08

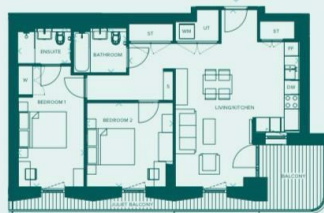
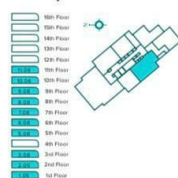
Dimensions

Living/Kitchen	7.3m x 7.0m	23'11" x 22'11"
Bedroom 1	4.9m x 2.7m	16'1" x 8'10"
Bedroom 2	3.5m x 3.4m	11'6" x 11'2"
Bathroom	2.1m x 1.8m	6'11" x 5'11"
Ensuite	2.1m x 1.4m	6'11" x 4'7"
Total Internal Area	75.0 sq m	807.3 sq ft
Balcony	6.7 sq m	72.1 sq ft
Juliet Balcony	5.4 sq m	58.1 sq ft

KEY

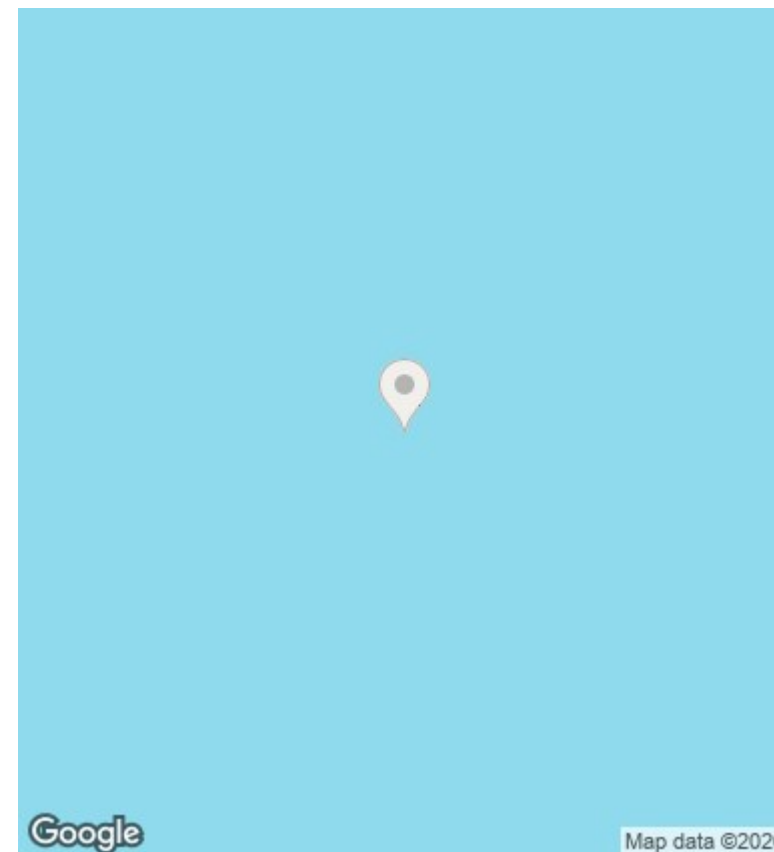
DW = Dishwasher
FF = Fridge/Freezer
S = Shelving
ST = Store
UT = Utility Cupboard
W = Wardrobe
WM = Washing Machine

Floor & Apartment Locator



Disclaimer:
All measurements and distances given are approximate only. Bathroom and kitchen layouts are indicative only and are subject to change. Apartment layout may vary slightly from one another depending on the floor level. These plans have been prepared with all due care for the convenience of the intending purchaser. The information contained herein is a preliminary guide only.

- 76 -



Directions

Viewings

Viewings by arrangement only. Call 02070990800 to make an appointment.

Council Tax Band

New Build

EPC Rating:

B

Energy Efficiency Rating		
	Current	Potential
Very energy efficient - lower running costs		
(92 plus) A		
(81-91) B	86	86
(69-80) C		
(55-68) D		
(39-54) E		
(21-38) F		
(1-20) G		
Not energy efficient - higher running costs		
England & Wales	EU Directive 2002/91/EC	