



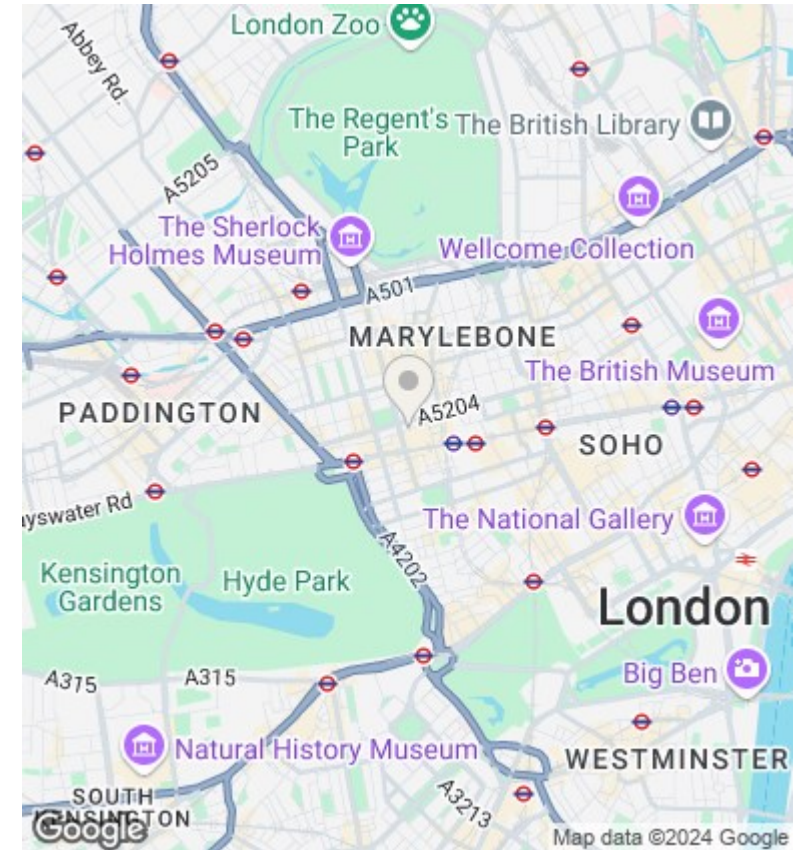
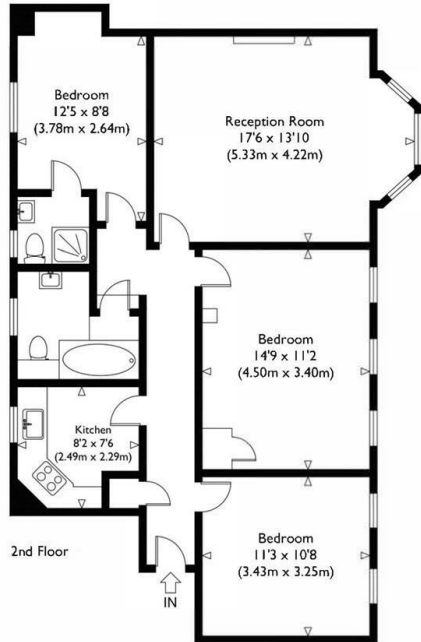
Wigmore Court, Wigmore Street

£1,195 Per Week

- 3 Bedrooms
- 2 Bathrooms
- Kitchen
- Reception Room

Wigmore Street, WIU

Approximate Gross Internal Floor Area : 891 sq ft / 82.8 sq m



Directions

Viewings

Viewings by arrangement only. Call 02070990800 to make an appointment.

Council Tax Band

H

EPC Rating:

C

Energy Efficiency Rating		Current	Potential
<i>Very energy efficient - lower running costs</i>			
(92 plus) A			
(81-91) B		77	83
(69-80) C			
(55-68) D			
(39-54) E			
(21-38) F			
(1-20) G			
<i>Not energy efficient - higher running costs</i>			
England & Wales		EU Directive 2002/91/EC	