



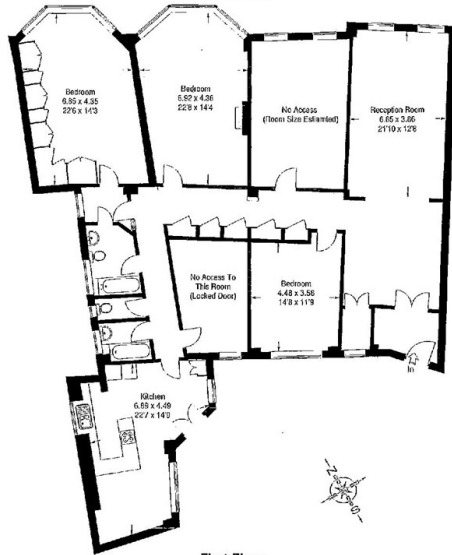
Strathmore Court, London

£1,960 Per Week

- 5 Bedrooms
- 2 Bathrooms
- Double Reception Room
- Breakfast Room
- Kitchen
- Porter
- Lift
- Video Entry

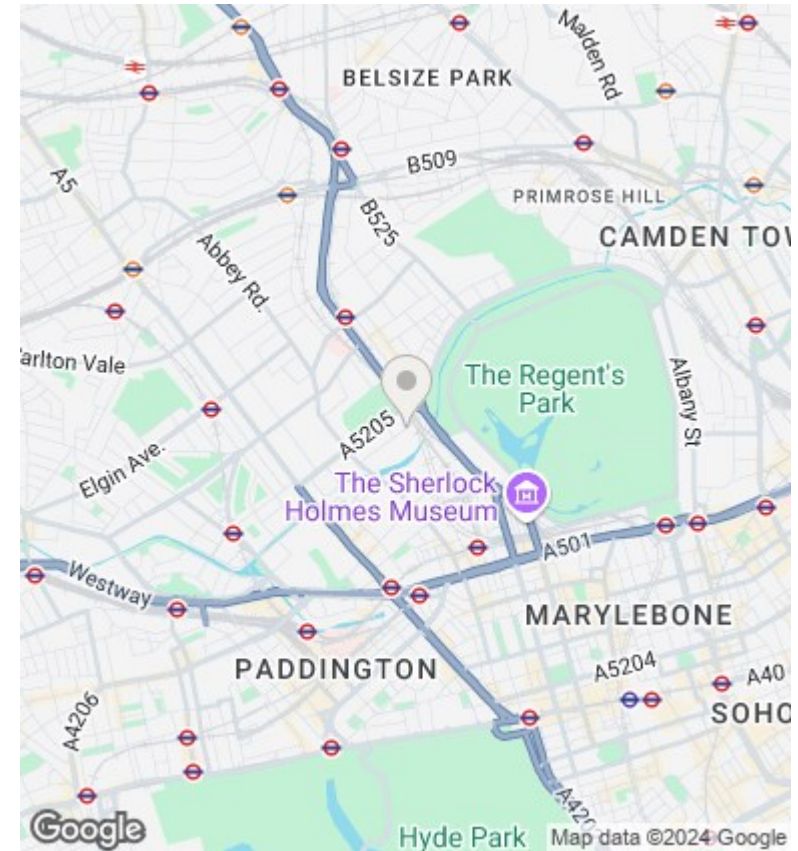
Strathmore Court Flat 14, Park Road, NW8

Approximate Gross Internal Area :-
225 sq m / 2421 sq ft



First Floor
FLOORPLAN © 2003

01463 75510 Ref: 38360
This floor plan is for information purposes only. It is intended to be used in accordance with the 1980/1984 regulations. It does not constitute an offer of any property. It is not intended to be used as a basis for any legal proceedings. It is not intended to be used as a basis for any legal proceedings. It is not intended to be used as a basis for any legal proceedings.



Directions

Viewings

Viewings by arrangement only. Call 02070990800 to make an appointment.

Council Tax Band

H

EPC Rating:

C

Energy Efficiency Rating		Current	Potential
Very energy efficient - lower running costs			
(92 plus) A			
(81-91) B			
(69-80) C		70	74
(55-68) D			
(39-54) E			
(21-38) F			
(1-20) G			
Not energy efficient - higher running costs			
England & Wales		EU Directive 2002/91/EC	