



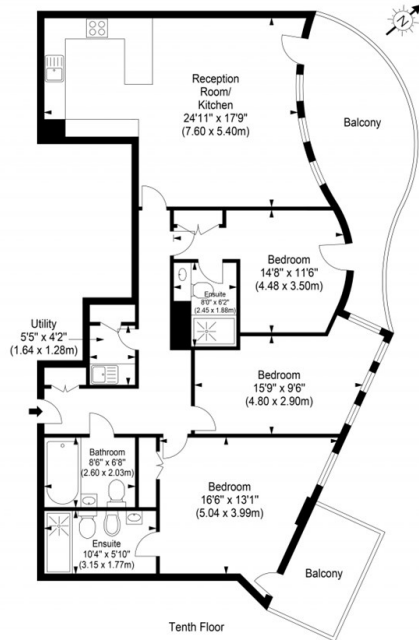
Pinnacle House, Battersea Reach

£1,075 Per Week

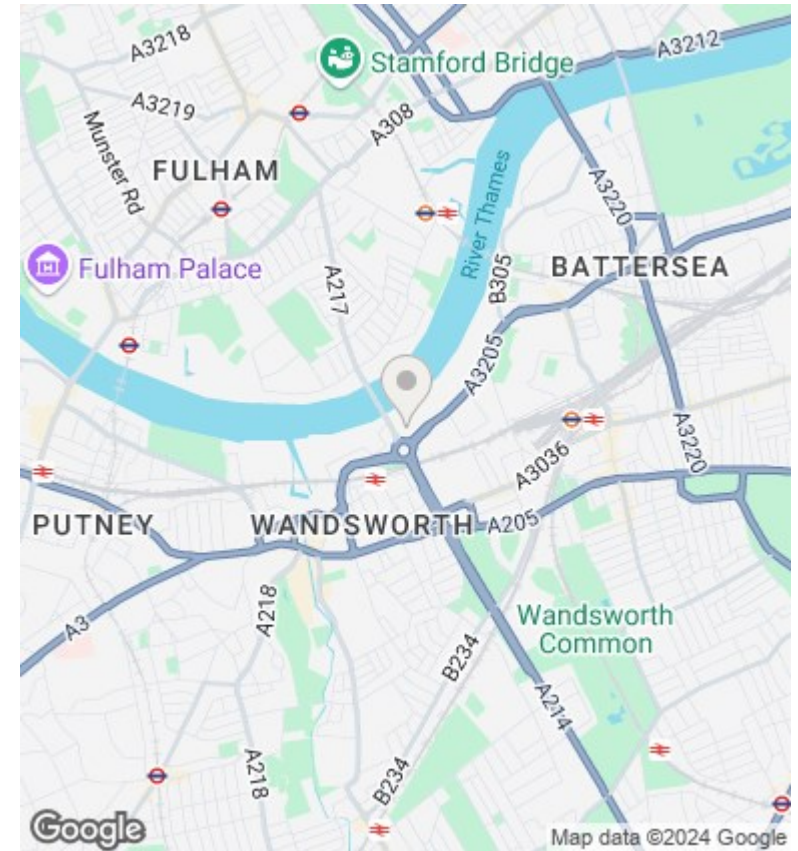
- Master Bedroom
- Bathroom (Ensuite)
- Lift
- 24/7 Concierge
- Second Bedroom
- Reception Room
- Parking
- Third Bedroom
- Kitchen
- Gym Facilities

**Pinnacle House,
Juniper Drive, London, SW18 1JE**

Approx. Gross Internal Area 1210 sq ft - 112.37 sq m



Ref: [Redacted] Copyright THEBLEUPLAN
 Disclaimer: Floor plan measurements are approximate and are for illustrative purposes only. While we do not doubt the floor plan accuracy and completeness, you or your advisors should conduct a careful, independent investigation of the property in respect of monetary valuation.



Directions

Viewings

Viewings by arrangement only. Call 02070990800 to make an appointment.

Council Tax Band

G

EPC Rating:

B

Energy Efficiency Rating		
	Current	Potential
Very energy efficient - lower running costs		
(92 plus) A		
(81-91) B	86	86
(69-80) C		
(55-68) D		
(39-54) E		
(21-38) F		
(1-20) G		
Not energy efficient - higher running costs		
England & Wales	EU Directive 2002/91/EC	