



## 4 Riverlight Quay, Nine Elms, London SW11

Guide Price £945,000

- Two double bedroom apartment
- Private balcony
- Walking distance to Battersea Underground station and Vauxhall & Nine Elms Underground Stations
- Fully fitted eat-in kitchen with integrated appliances
- 24 Hr Concierge
- Built in Storage
- Onsite Amenities: Gym, Swimming Pool, Cinema Room & Virtual Golf

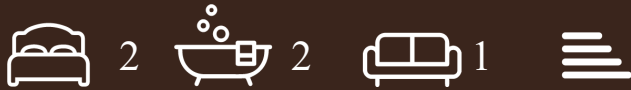
# 4 Riverlight Quay, London SW11 8AA

Nestled in the heart of the vibrant Nine Elms district in London, this stunning new build apartment at 4 Riverlight Quay is a true gem waiting to be discovered.

Boasting a stylish and modern design, this 2nd-floor apartment features 2 bedrooms, 2 bathrooms, and a spacious living area that opens up to a large private balcony, perfect for enjoying your morning coffee or hosting evening gatherings. The two double bedrooms come complete with built-in storage, offering ample space for all your belongings.

One of the highlights of this property is its fully fitted kitchen with integrated appliances, ideal for whipping up delicious meals. The modern bathroom, adorned with floor-to-ceiling tiles, adds a touch of luxury to everyday living.

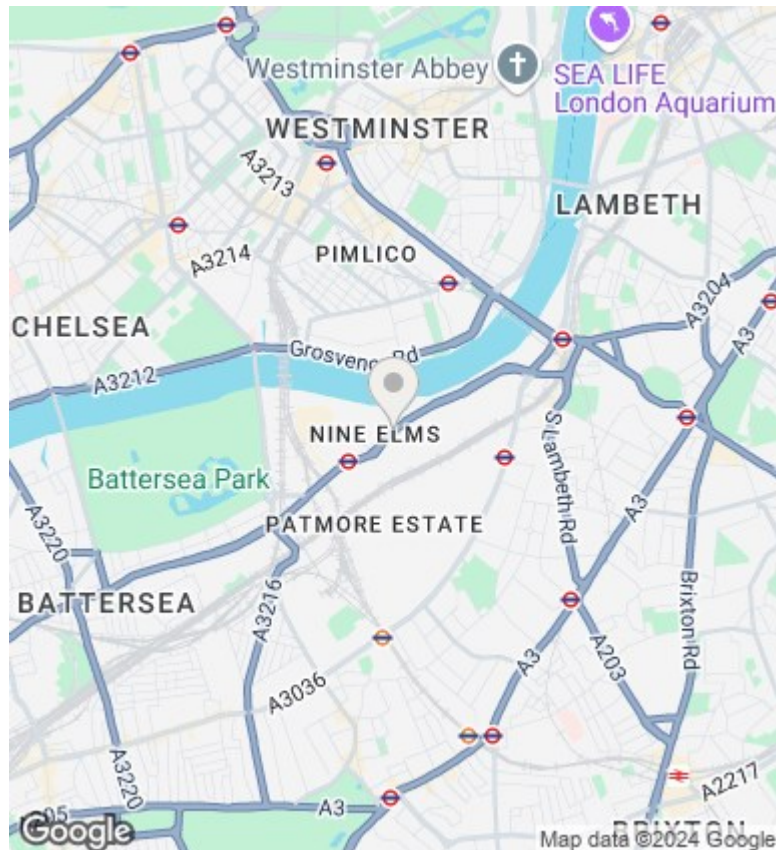
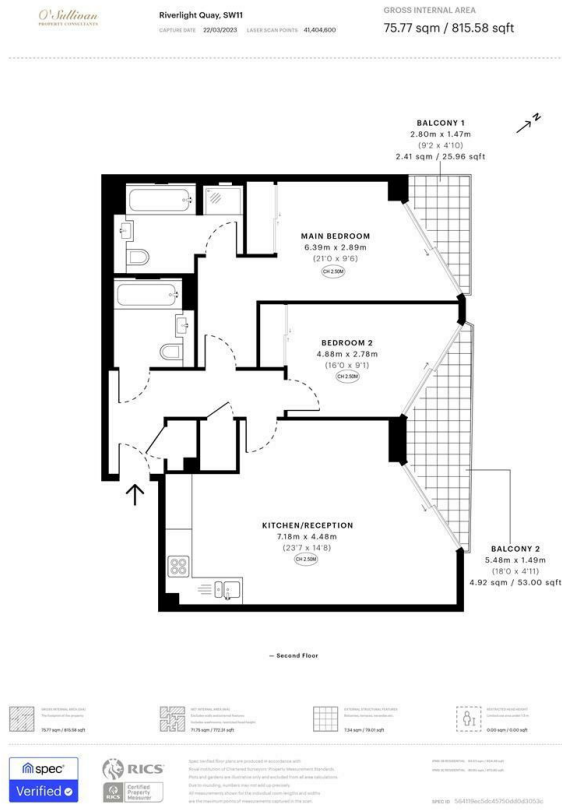
But the appeal of this property extends beyond its interiors. The Riverlight Quay development offers an array of top-of-the-range facilities for residents to enjoy, including a gym, swimming pool, sauna, cinema room, and even a virtual golf area.



Council Tax Band: F







**Directions**

**Viewings**

Viewings by arrangement only. Call 02070990800 to make an appointment.

**Council Tax Band**

F

Energy Efficiency Rating		
	Current	Potential
<i>Very energy efficient - lower running costs</i>		
(92 plus) <b>A</b>		
(81-91) <b>B</b>		
(69-80) <b>C</b>		
(55-68) <b>D</b>		
(39-54) <b>E</b>		
(21-38) <b>F</b>		
(1-20) <b>G</b>		
<i>Not energy efficient - higher running costs</i>		
<b>England &amp; Wales</b>	EU Directive 2002/91/EC	