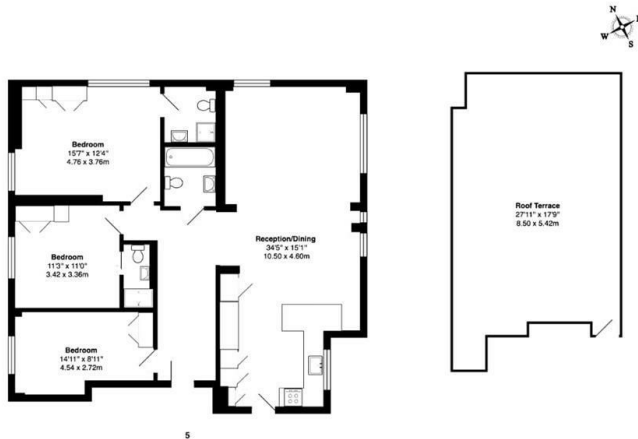




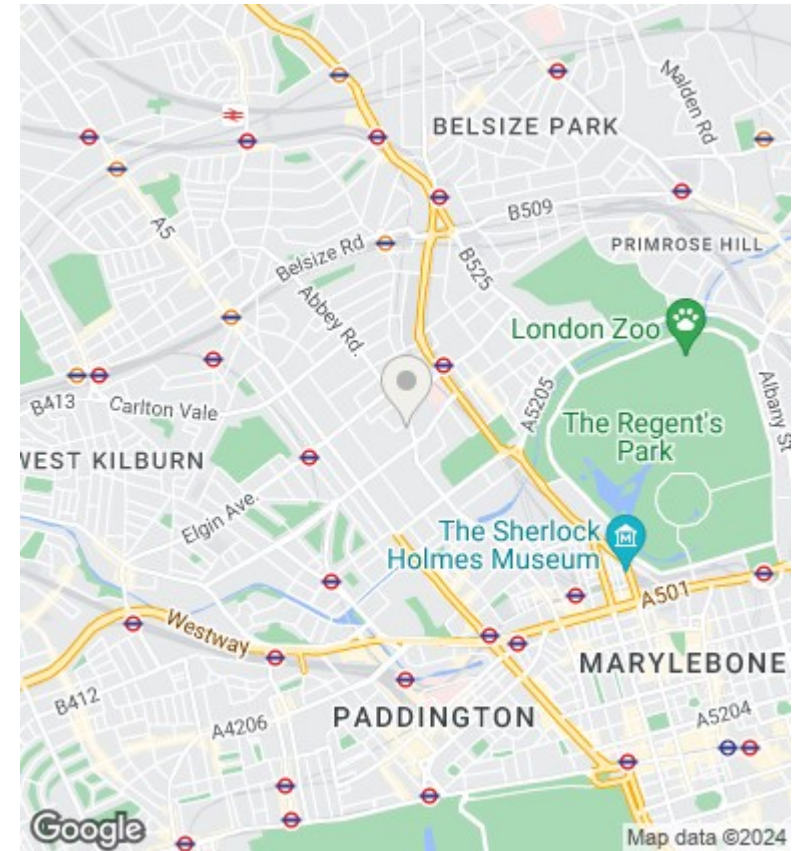
Garden Road, St. John's Wood, NW8 London

Asking Price £1,500,000

- 3 bedroom Penthouse
- Newly Refurbished
- Great Location Off Abbey Road
- 3 Bathroom/Shower Rooms (2 En-Suites)
- Lift Access
- Close to St John's Wood underground station (Jubilee Line)
- Private Roof Terrace with amazing views
- Communal Garden
- Close to shops, restaurants, and cafes along St John's Wood High Street



Garden Court, Garden Road, St John's Wood, NW8
 Total Gross Area: 1195 sq ft ... 111.1 m² (excluding roof terrace)



Directions

Viewings

Viewings by arrangement only. Call 02070990800 to make an appointment.

Council Tax Band

G

EPC Rating:

E

Energy Efficiency Rating		Current	Potential
<i>Very energy efficient - lower running costs</i>			
(92 plus) A			
(81-91) B			
(69-80) C			
(55-68) D			
(39-54) E		47	56
(21-38) F			
(1-20) G			
<i>Not energy efficient - higher running costs</i>			
England & Wales		EU Directive 2002/91/EC	