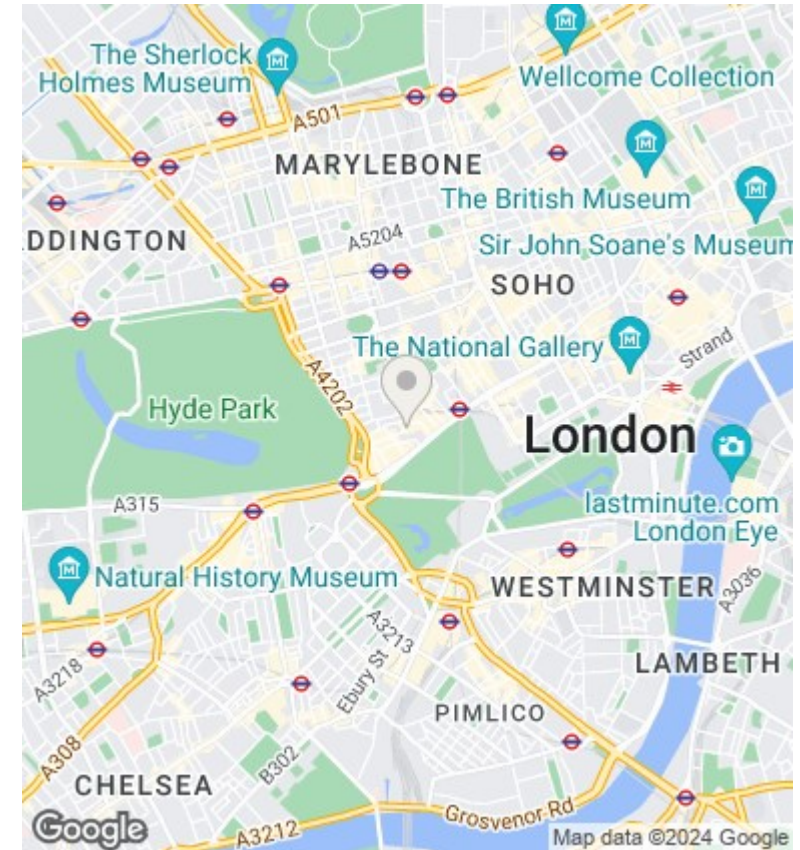
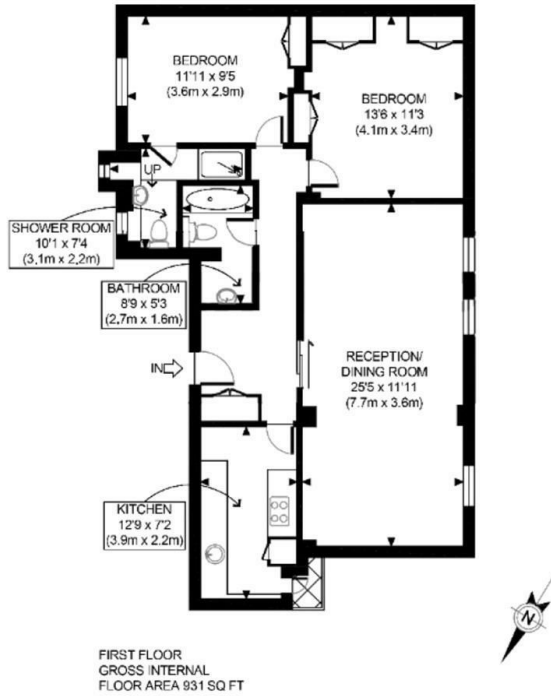




Hertford Street, Mayfair, London W1J

Asking Price £1,750,000

- 24 Hour Porters
- Communal Car Parking
- Views toward Hyde Park
- Close to Green Park Station
- 2 Bedrooms, 2 Bathrooms
- High Ceiling
- Prime location in Mayfair
- Two Lifts
- Bright with natural light
- Close to prime shopping, dining and nightlife destinations



Directions

Viewings

Viewings by arrangement only. Call 02070990800 to make an appointment.

Council Tax Band

G

EPC Rating:

C

Energy Efficiency Rating		
	Current	Potential
Very energy efficient - lower running costs		
(92 plus) A		
(81-91) B		
(69-80) C		
(55-68) D		
(39-54) E		
(21-38) F		
(1-20) G		
Not energy efficient - higher running costs		
England & Wales	EU Directive 2002/91/EC	