



## Point West, 116 Cromwell Road

£925 Per Week

- Underground Parking
- 24 Concierge
- 3 mins walk to Gloucester Road Station
- Balcony
- Oak Hardwood flooring throughout
- Underfloor heating

### Point West

Approximate Gross Internal Area = 103 sq m / 1109 sq ft

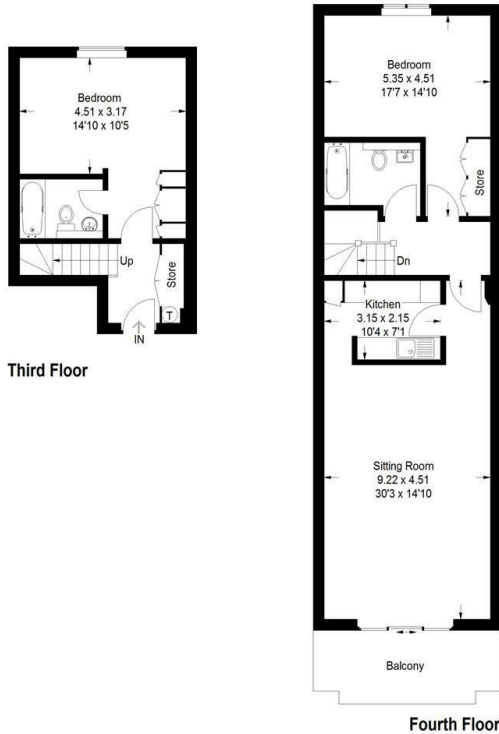
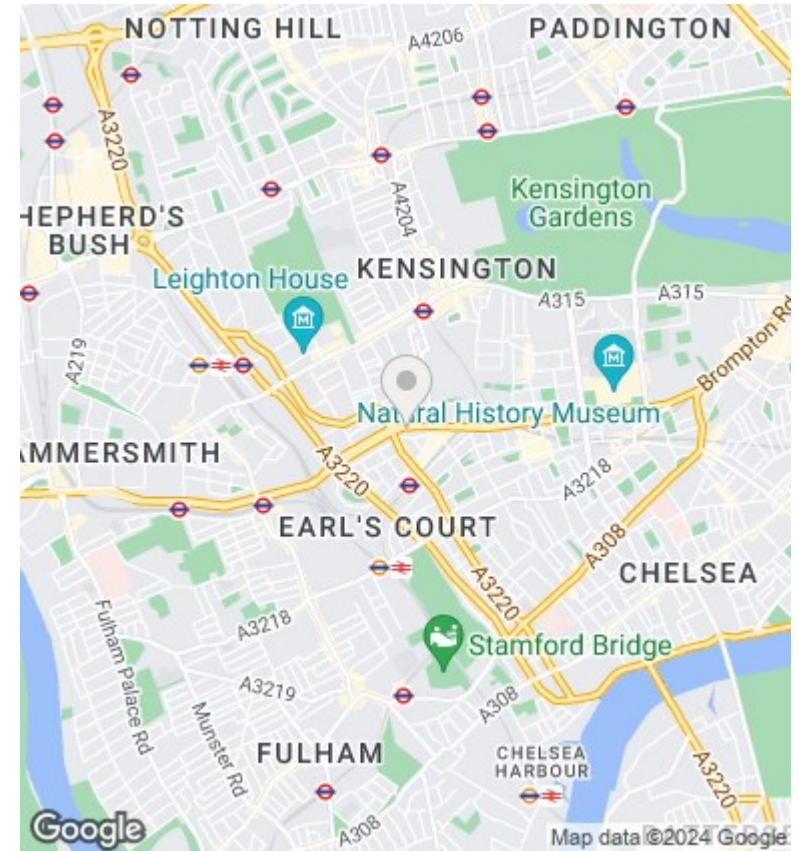


Illustration for identification purposes only, measurements are approximate, not to scale.  
FloorplansUsketch.com © 2014 (ID115918)



### Directions

### Viewings

Viewings by arrangement only. Call 02070990800 to make an appointment.

### Council Tax Band

G

### EPC Rating:

C

Energy Efficiency Rating		Current	Potential
<i>Very energy efficient - lower running costs</i>			
(92 plus) <b>A</b>			
(81-91) <b>B</b>		79	82
(69-80) <b>C</b>			
(55-68) <b>D</b>			
(39-54) <b>E</b>			
(21-38) <b>F</b>			
(1-20) <b>G</b>			
<i>Not energy efficient - higher running costs</i>			
<b>England &amp; Wales</b>		EU Directive 2002/91/EC	