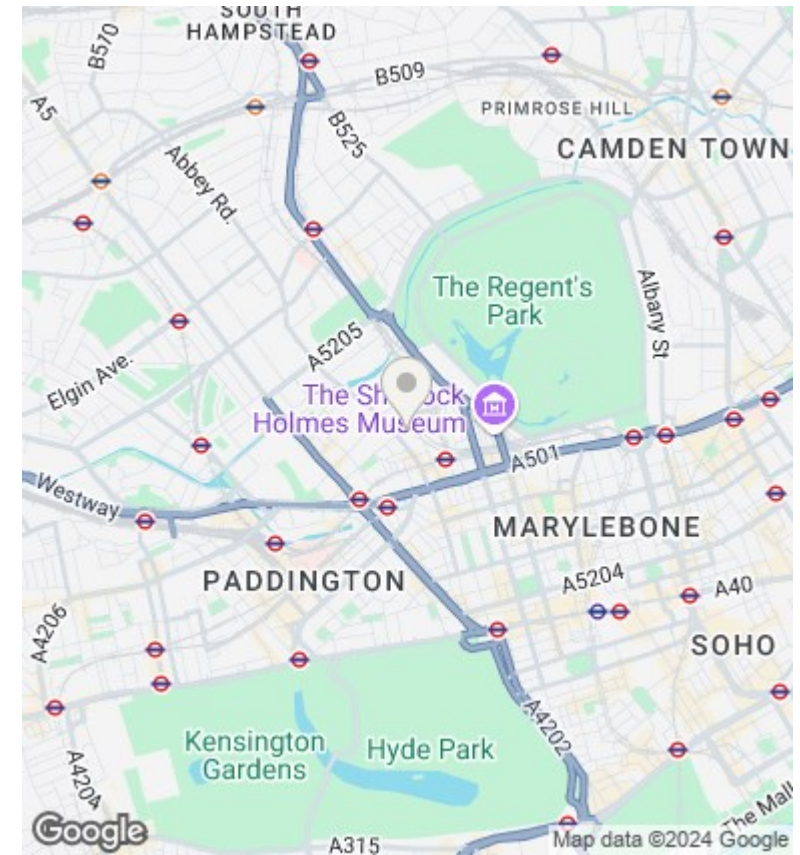
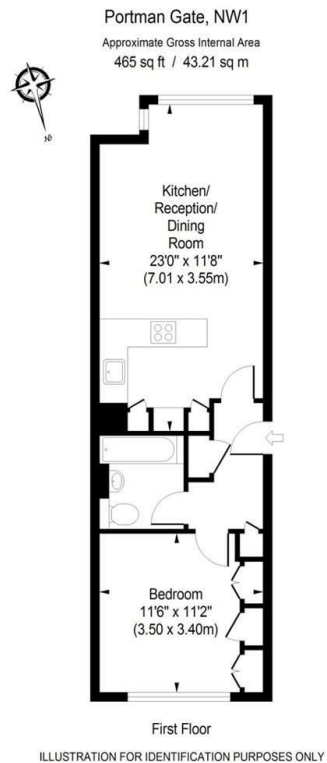




## Portman Gate, Lisson Grove, London NW1

Offers Over £500,000

- Dual aspect with view over the courtyard
- Communal Garden
- Secured Underground Parking
- Great location and very close to Marylebone Station
- 24hrs Porter
- Swimming Pool & Sauna
- Visitors Parking
- Lift
- Gym
- Long lease of 961 years remaining with Share of freehold



## Directions

## Viewings

Viewings by arrangement only. Call 02070990800 to make an appointment.

## Council Tax Band

D

## EPC Rating:

C

Energy Efficiency Rating		
	Current	Potential
<i>Very energy efficient - lower running costs</i>		
(92 plus) <b>A</b>		
(81-91) <b>B</b>		
(69-80) <b>C</b>	75	79
(55-68) <b>D</b>		
(39-54) <b>E</b>		
(21-38) <b>F</b>		
(1-20) <b>G</b>		
<i>Not energy efficient - higher running costs</i>		
<b>England &amp; Wales</b>	EU Directive 2002/91/EC	