

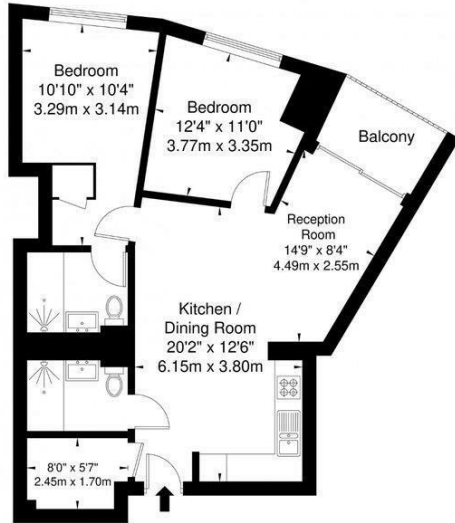
## Westmark Tower, 1 Newcastle Place, London W2

Asking Price £1,249,950

- 2 Bedroom
- Integrated appliances
- Residents Cinema, lounges, gym and pool
- Long leasehold 999 years from new
- 2 Bathroom (1 Ensuite)
- Fitted modern kitchen
- Short walk to Hyde Park
- High specification finish
- 24 hrs Concierge
- Secured underground parking

**Westmark Tower, Newcastle Place, West End Gate, W2 1EF**

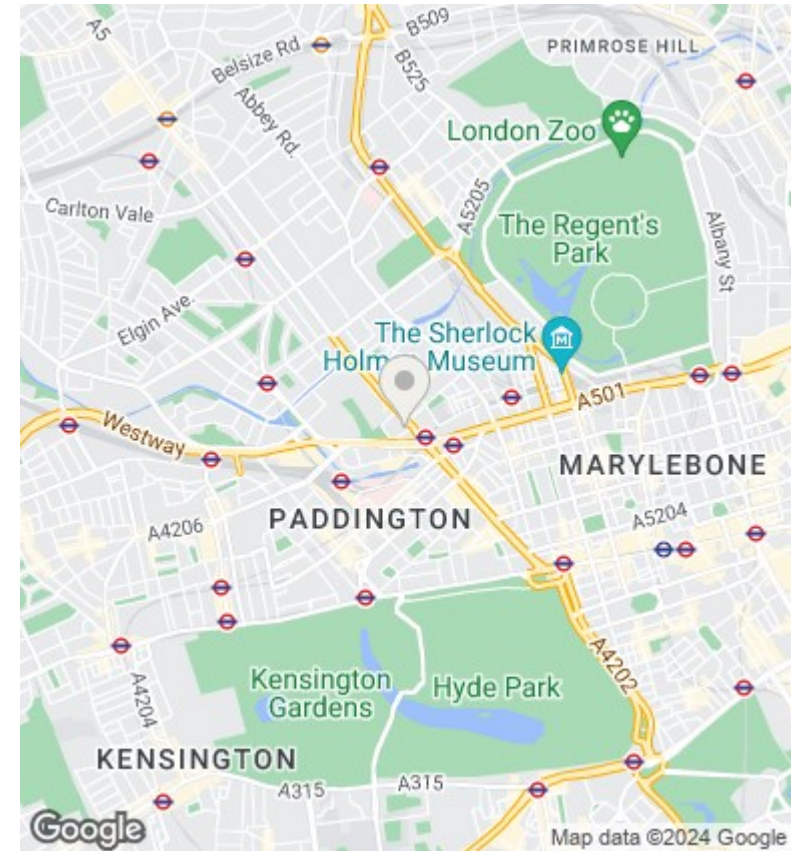
Approx. Gross Internal Area = 78.3 sq m / 843 sq ft



Ref

Copyright **BLEU PLAN**

Disclaimer : Floor plan measurements are approximate and are for illustrative purposes only. While we do not doubt the floor plan accuracy and completeness, you or your advisors should conduct a careful, independent investigation of the property in respect of monetary valuation.



**Directions**

**Viewings**

Viewings by arrangement only. Call 02070990800 to make an appointment.

**Council Tax Band**

F

**EPC Rating:**

B

Energy Efficiency Rating		Current	Potential
<i>Very energy efficient - lower running costs</i>			
(92 plus) <b>A</b>		<b>87</b>	<b>87</b>
(81-91) <b>B</b>			
(69-80) <b>C</b>			
(55-68) <b>D</b>			
(39-54) <b>E</b>			
(21-38) <b>F</b>			
(1-20) <b>G</b>			
<i>Not energy efficient - higher running costs</i>			
<b>England &amp; Wales</b>		EU Directive 2002/91/EC	