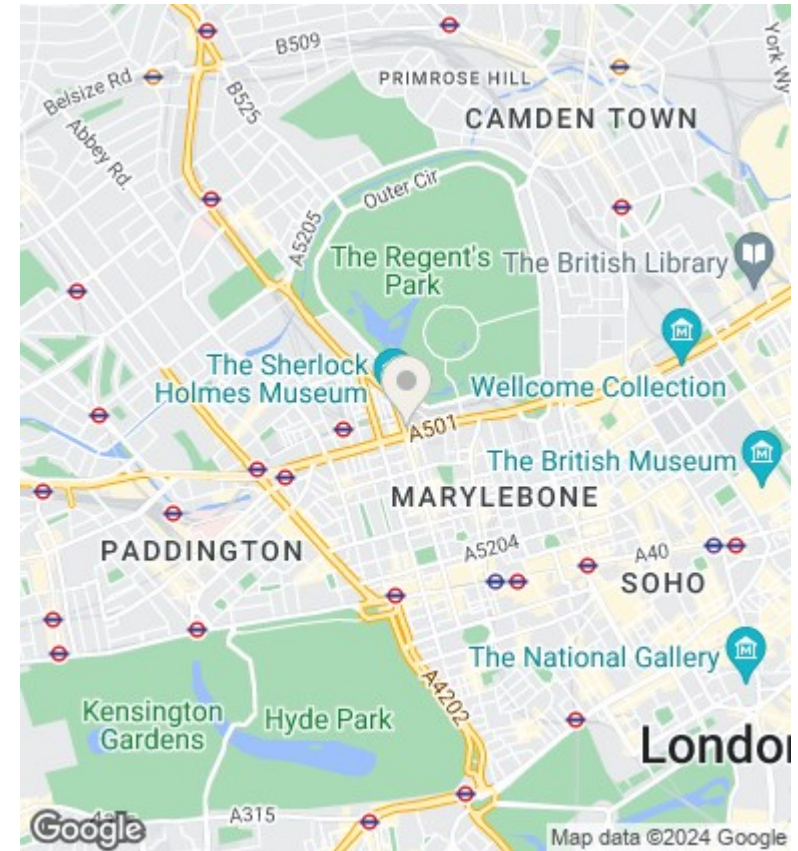
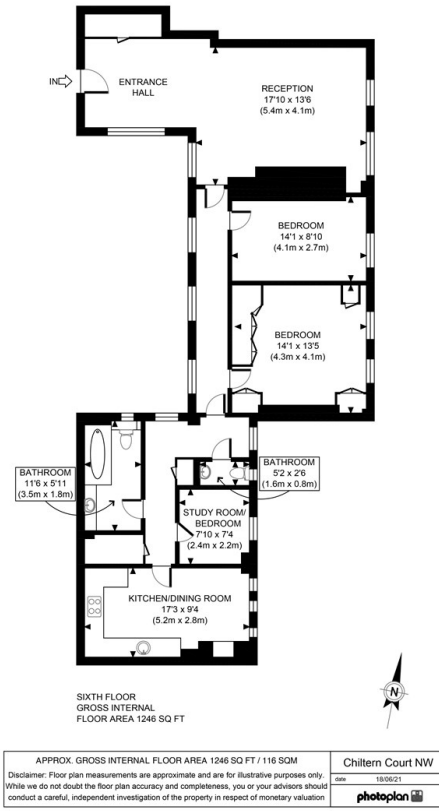




## Chiltern Court, Baker Street, London

£800 Per Week

- Lift Access
- 1246 sq. ft.
- Portered Development
- 24/7 Porterage
- Regent's Park
- Convenient access to transport
- Restaurants and Shops



**Directions**

**Viewings**

Viewings by arrangement only. Call 02070990800 to make an appointment.

**Council Tax Band**

G

**EPC Rating:**

C

Energy Efficiency Rating		
	Current	Potential
Very energy efficient - lower running costs		
(92 plus) <b>A</b>		
(81-91) <b>B</b>		<b>81</b>
(69-80) <b>C</b>	<b>69</b>	
(55-68) <b>D</b>		
(39-54) <b>E</b>		
(21-38) <b>F</b>		
(1-20) <b>G</b>		
Not energy efficient - higher running costs		
<b>England &amp; Wales</b>	EU Directive 2002/91/EC	