

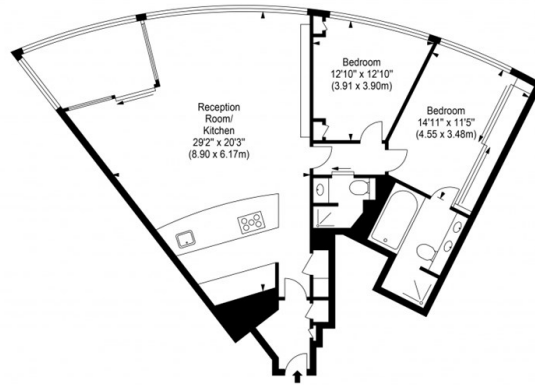
## The Tower, St. George Wharf, London SW8

Reduced To £1,200,000

- 2 Bedrooms
- Reception
- Leisure Facilities
- EPC Rating B
- Bathroom
- Open Plan Kitchen
- Concierge
- Shower Room
- Sky Garden
- Communal Business Lounge

## St. George Wharf, London, SW8 2D

Approx. Gross Internal Area 1145 sq ft - 106.39 sq m



Ref:   
 Disclaimer: Floor plan measurements are approximate and are for illustrative purposes only. While we do not doubt the floor plan accuracy and completeness, you or your advisors should conduct a careful, independent investigation of the property in respect of monetary valuation.

### Viewings

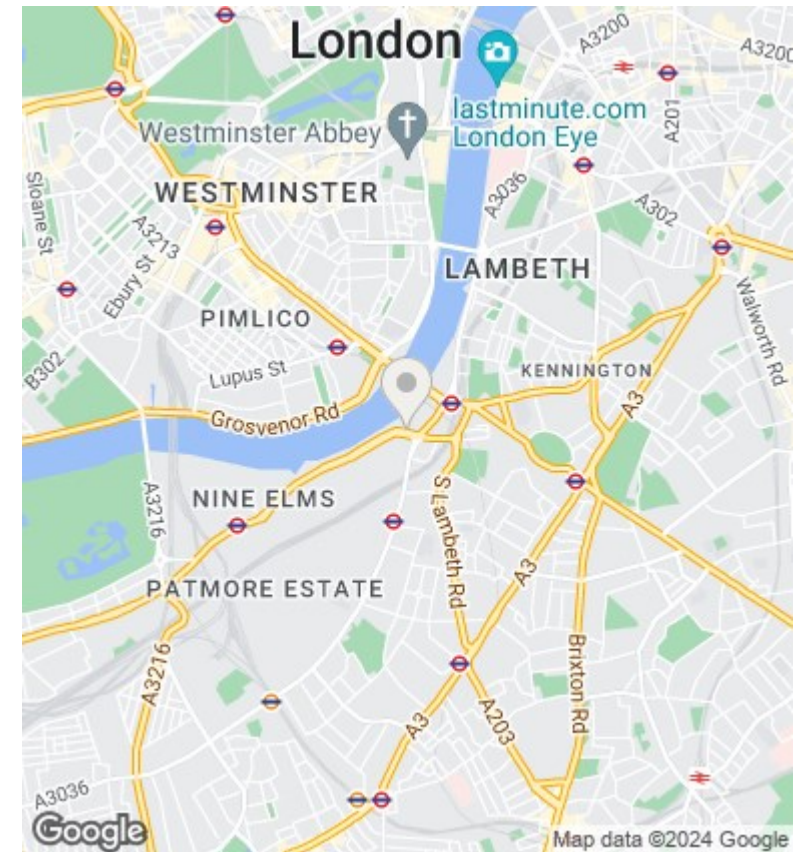
Viewings by arrangement only. Call 02070990800 to make an appointment.

### Council Tax Band

H

### EPC Rating:

B



### Directions

Energy Efficiency Rating		Current	Potential
<i>Very energy efficient - lower running costs</i>			
(92 plus) <b>A</b>			
(81-91) <b>B</b>		82	83
(69-80) <b>C</b>			
(55-68) <b>D</b>			
(39-54) <b>E</b>			
(21-38) <b>F</b>			
(1-20) <b>G</b>			
<i>Not energy efficient - higher running costs</i>			
<b>England &amp; Wales</b>		EU Directive 2002/91/EC	