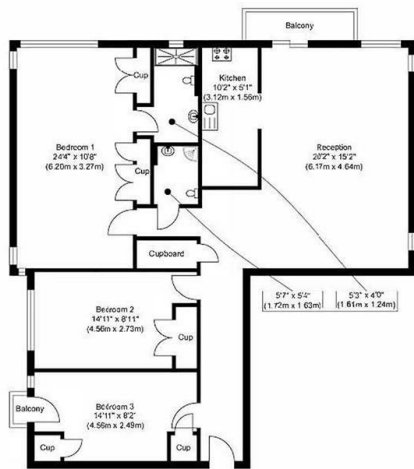


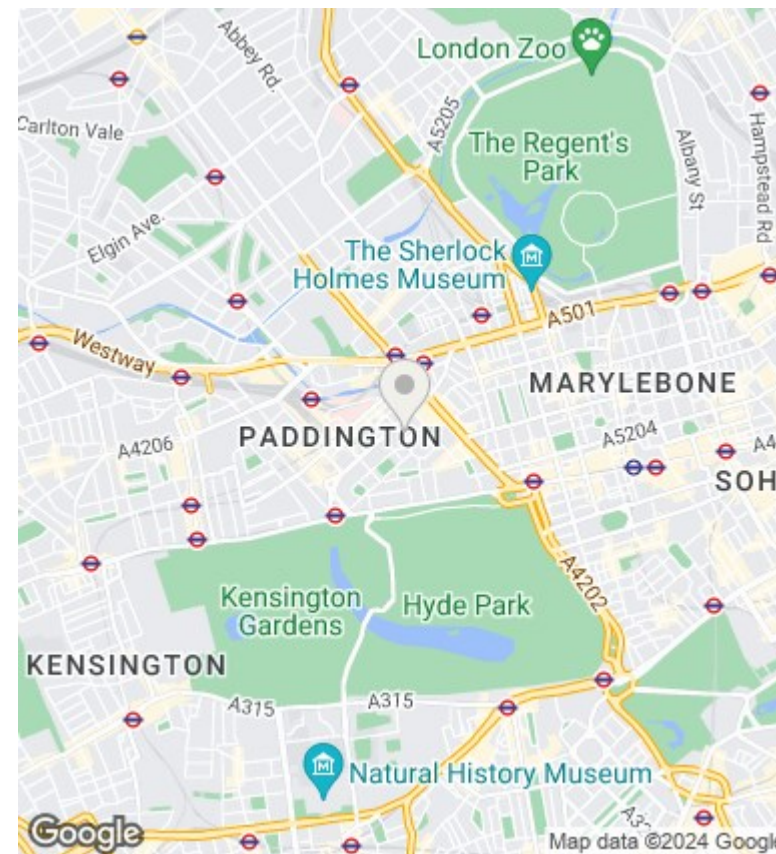
## The Quadrangle, London

Asking Price £1,500,000

- 3 Bedrooms
- Open Plan Kitchen
- EPC Rating C
- 2 Bathroom
- Lift
- Air Con.
- Spacious Reception Room
- 24 Hour Porter



Approximate Floor Area  
 1074.02 sq. ft.  
 (99.78 sq. m)



## Directions

## Viewings

Viewings by arrangement only. Call 02070990800 to make an appointment.

## Council Tax Band

G

## EPC Rating:

B

Energy Efficiency Rating		Current	Potential
<i>Very energy efficient - lower running costs</i>			
(92 plus) <b>A</b>			
(81-91) <b>B</b>		82	84
(69-80) <b>C</b>			
(55-68) <b>D</b>			
(39-54) <b>E</b>			
(21-38) <b>F</b>			
(1-20) <b>G</b>			
<i>Not energy efficient - higher running costs</i>			
<b>England &amp; Wales</b>		EU Directive 2002/91/EC	