



3 Bedroom
Salisbury Road, NW6

 **Portland**
Trusted, every step of the way

£800,000
Leasehold

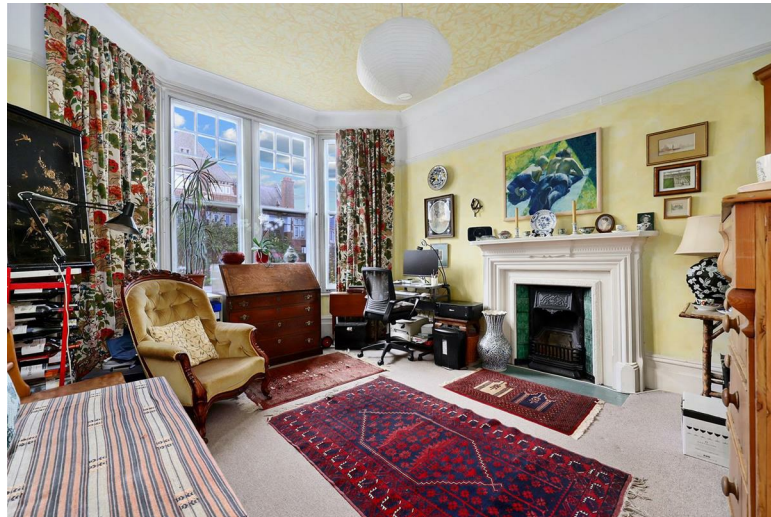
Positioned within the Queens Park Conservation Area, is a rarely available mansion flat built in 1904, with gorgeous communal gardens.

Brondesbury Park Mansions is an incredibly charming period property with excellent proportions, floods of natural light and all within one of the most popular roads in NW6.

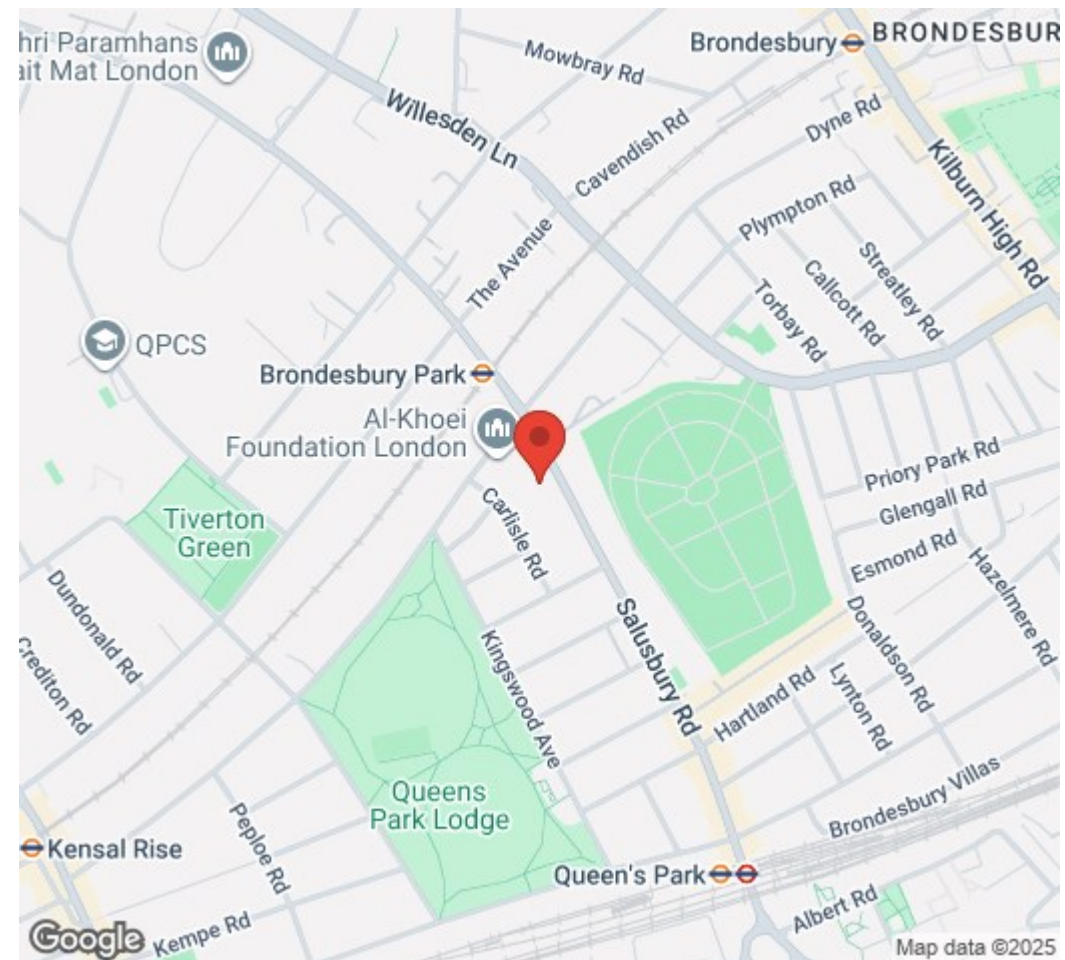
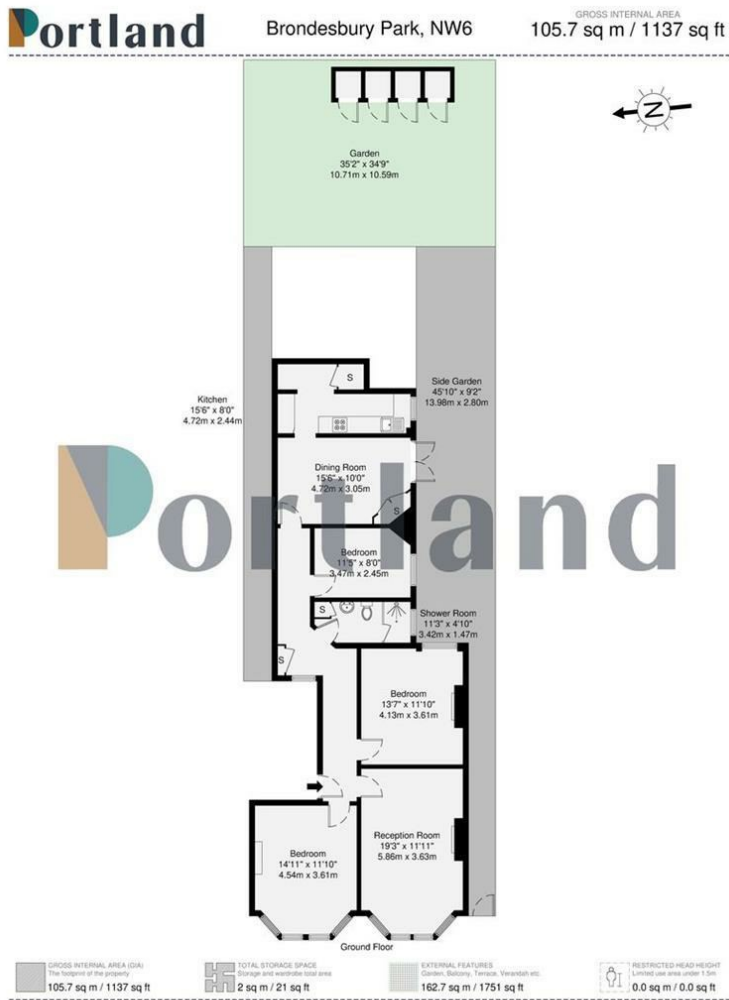
Internally, original features are in abundance – from fireplaces to picture rails. There are two large bedrooms and a smaller third. The front reception room offers green views of the mature foliage at the front, and to the rear of the property is the dining room and kitchen. This property is on the ground floor and has direct access to the west facing communal gardens – perfect for evening dining and entertaining.

Salisbury Road is the heart of Queens Park. A abundance of award winning shops and eateries are all available on your doorstep as well as gyms and office spaces. Prospective buyers will benefit excellent access to the west end via Queens Park Station (Bakerloo) as well as an easy commute East or West via Brondesbury Park (Mildmay Line). The ever popular Queens Park is also just a short stroll away.

- Charming three bedroom apartment
- Rarely available purpose built Edwardian mansion block
- Gorgeous west facing communal gardens with direct access
- Excellent proportions
- Stunning ceiling height with bay windows
- A plethora of original features
- Positioned in the heart of Queens Park
- Over 1100 square foot of accommodation
- A short stroll from Bakerloo and Overground lines
- Original fireplaces throughout



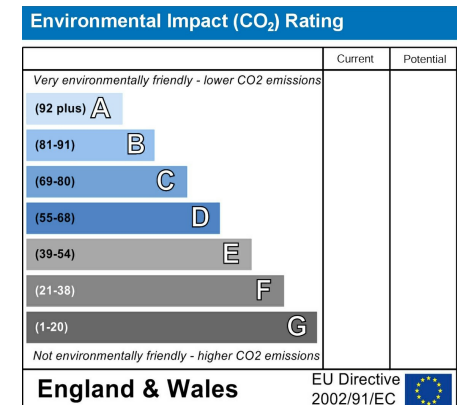
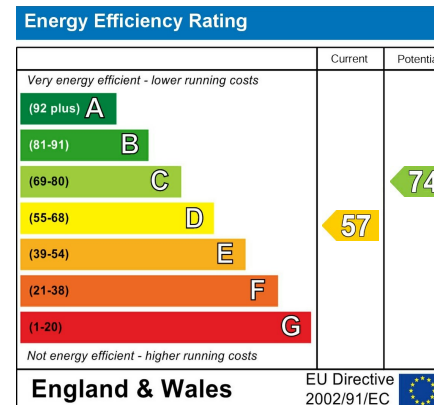




Trusted, every step of the way

90 Walm Lane, London, NW2 4QY
020 8451 9844

info@portlandestateagents.co.uk
www.portlandestateagents.co.uk



Important Notice - These particulars have been prepared in good faith and they are not intended to constitute part of an offer or contract. We have not performed a structural survey on this property and the services, appliances and specific fittings have not been tested. All photographs, measurements, floor plans and distances referred to are given as a guide and should not be relied upon.