



4 Bedroom  
Cricklewood Broadway, NW2

 **Portland**  
Trusted, every step of the way

£3,500 PCM



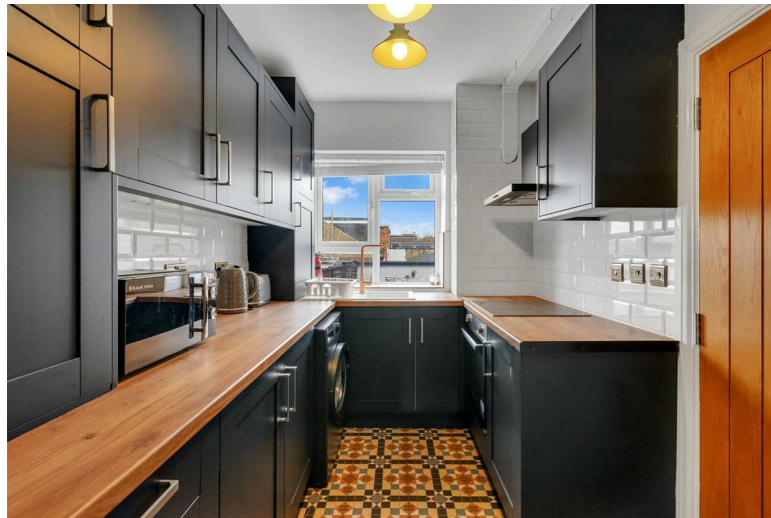
A beautifully presented FOUR-BEDROOM, THREE-BATHROOM flat set over two floors above shops on Cricklewood Broadway.

This TASTEFUL and well-proportioned home offers a bright reception room, a modern separate kitchen, and four generous bedrooms, making it ideal for sharers or a family seeking excellent space and convenience. The flat further benefits from three contemporary bathrooms, providing great comfort and practicality for busy households.

Located on Cricklewood Broadway, you're perfectly positioned for an array of local shops, cafés, supermarkets and restaurants right on your doorstep. Cricklewood Thameslink Station is just 0.5 miles away, offering fast connections into Central London and beyond. You also have excellent bus links along the Broadway and easy access to the A41, A5 and North Circular Road, making commuting effortless.

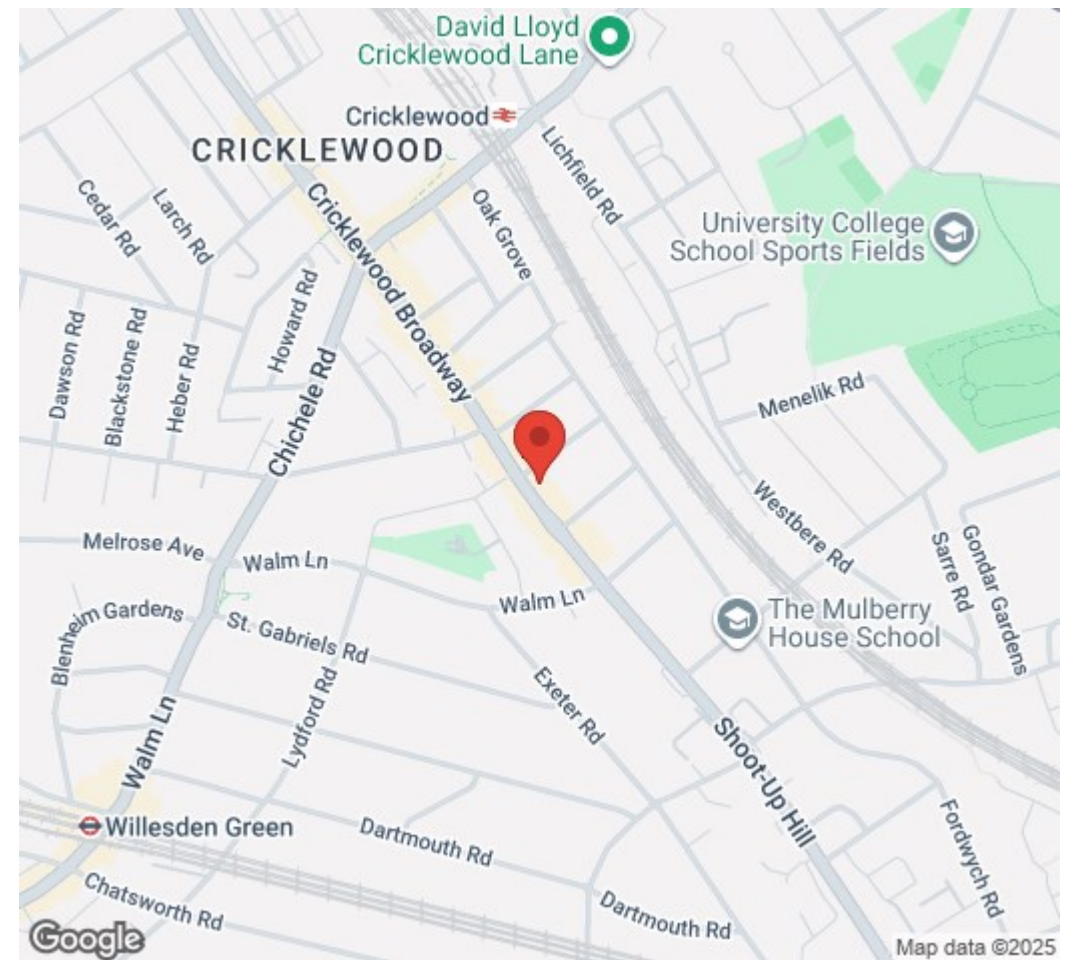
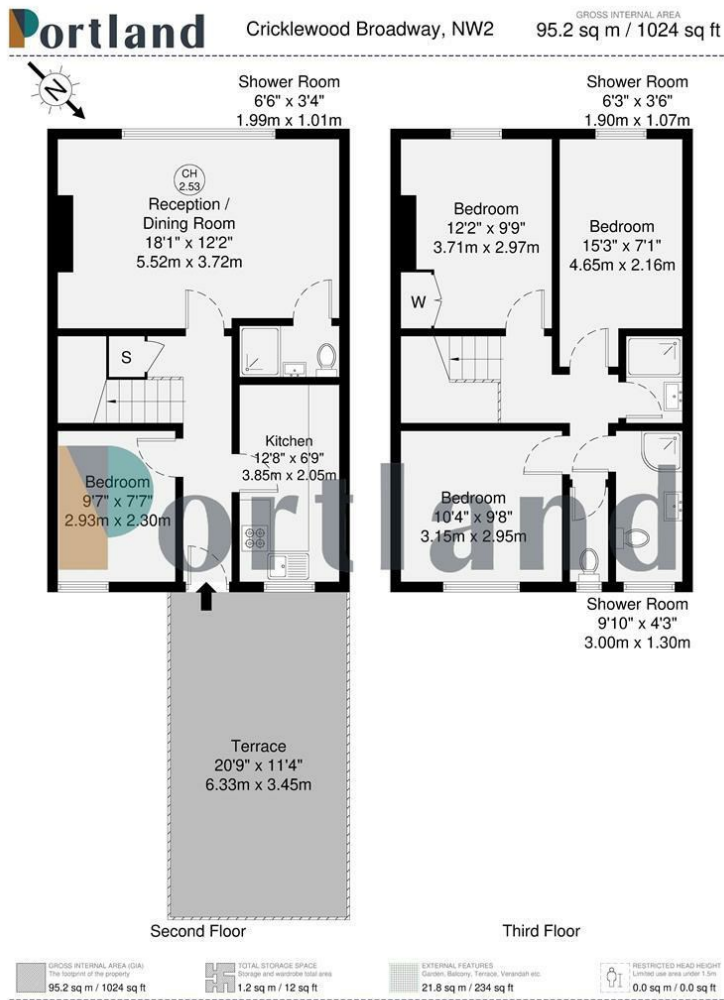
Available immediately and offered furnished.

- Modern & Tasteful Decor
- Three Shower Rooms
- Beautiful Entrance Tiles
- Suitable For Sharers & Families
- Close To Shops
- Close To Transport Links
- EPC – C

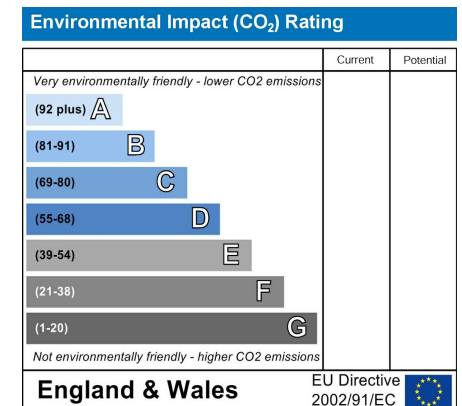
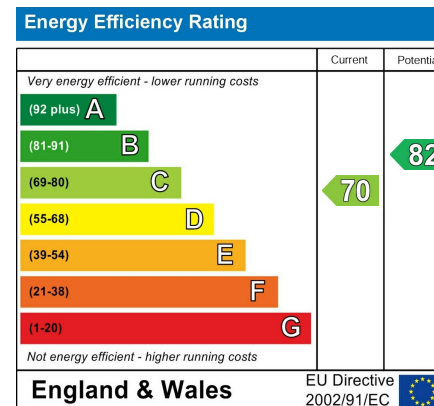








90 Walm Lane, London, NW2 4QY  
020 8451 9844  
info@portlandestateagents.co.uk  
www.portlandestateagents.co.uk



Important Notice - These particulars have been prepared in good faith and they are not intended to constitute part of an offer or contract. We have not performed a structural survey on this property and the services, appliances and specific fittings have not been tested. All photographs, measurements, floor plans and distances referred to are given as a guide and should not be relied upon.